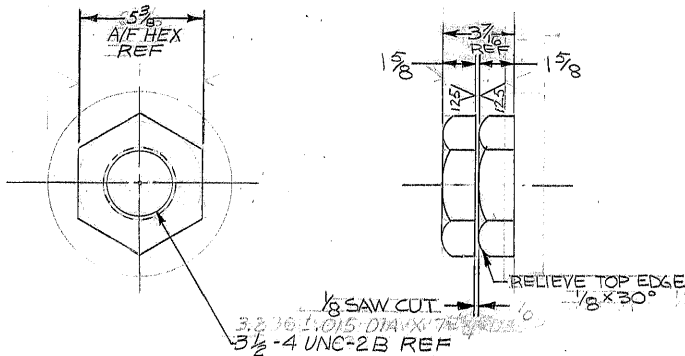


REVISIONS				
ZONE	LTR	DESCRIPTION	DATE	APPROVED
	A	REVISED PER AURA APPD. CONST. PRINT DATED 17 FEB 68	2/4/68	
	B	MATL. WAS ASTM A-325	4/30/68	



NOTES:

1. MAT'L: 3/4 UNC HIGH STRENGTH
STRUCTURAL NUT, ASTM: 354-65 GR. BC
FULL FACE *W/ 1/8" OVER*

2. APPLY 1 PRIMER COAT ALL OVER, EXCEPT
THREADS, AFTER MACHINING PER
W.G.C. SPECIFICATION 511.

3. ALL DIMENSIONS IN INCHES.

4. SAW ONE NUT AS SHOWN TO MAKE TWO.

REF.
FILE 1158

NEXT ASSEMBLY: 2150.151D402 (W.G.E 107 528)
2150.150D502 (W.G.E 107 527)
2150.150D402 (W.G.E 107 526)
2150.151D502 (W.G.E 107 574)

WESTERN GEAR CORPORATION
CONSTRUCTION PROJECTS
DEPARTMENT

APPROVED FOR
PROCUREMENT

SIGNED

DATE

FEB 24 1968

LIMITS ON
MACHINED DIMENSIONS
EXCEPT AS NOTED

ANGULAR $\pm 1^{\circ} 0'$

LINEAR

X = $\pm .1$

XX = $\pm .03$

XXX = $\pm .010$

FRACTIONAL $\pm 1/32$

BREAK ALL
SHARP EDGES

150 IN STELLAR
TELESCOPE MOUNTING

DRAWN S. J. TRAGESSER 1/31/68

CHECK ERNE RUSSO 4 FEB 68

ENGR

W.G.C 112 305

APPROVED

WESTERN
GEAR CORPORATION

HEAVY MACHINERY DIVISION
EVERETT, WASHINGTON

LOCK NUT FOR
SEISMIC ANCHOR

SIZE
B 16603

CODE IDENT NO.

2150.150B004

REV

B

SCALE 1/4" = 1" WT. 9 1/2 LB SHEET 1 OF