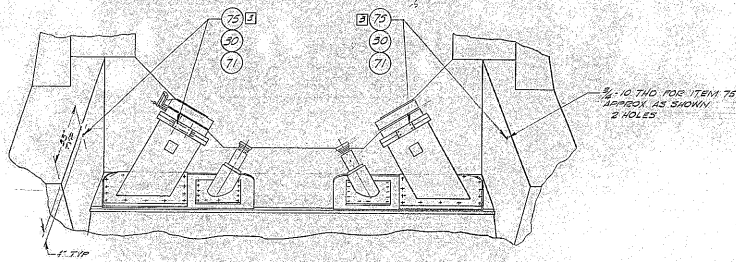
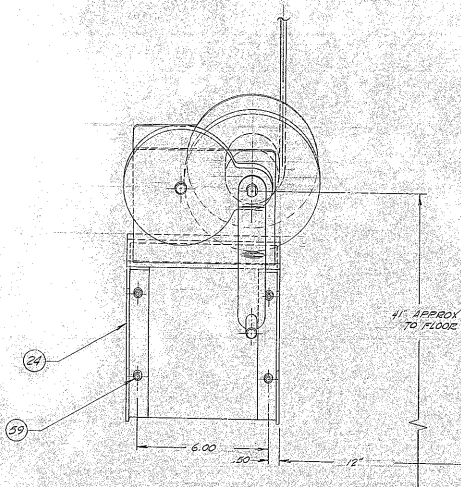


- NOTES: UNLESS OTHERWISE NOTED
1. REMOVE ALL BURRS AND SHARP EDGES
 2. MACHINED SURFACE ROUGHNESS $R_{\text{A}} = 125$
 3. REMOVE $\frac{1}{8}$ " NET HOI CAP JOG FROM HYDROSTATIC BEARING ASSEMBLY AS SHOWN & SUBSTITUTE ITEM 75 - 2 PLACES

REVISIONS					
DATE	LINE	DESCRIPTION	BY	DATE	BY APPD
	1	Change of Reference for Base	2288	10-10-64	W.A.S.

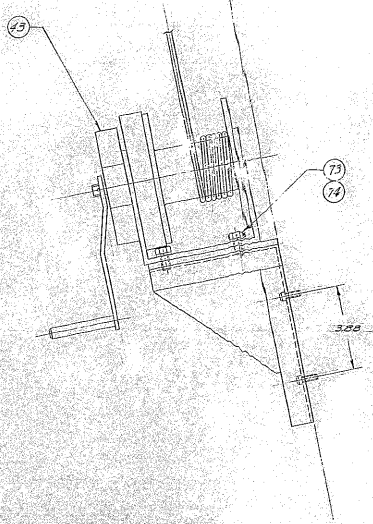


VIEW OF SOUTH BEARING SUPPORT ASSY SHOWING ATTACH POINTS FOR STATIONARY END OF SAFETY NET PURCHASED FROM SAFETY & INDUSTRIAL NET CO. 408 HILL, EAST HANPTON, CONN.



VIEW 12-12
HALF SCALE-TYP BUT OPPOSITE FOR EAST SIDE MOUNTING POSITION APPROX AS SHOWN

2150-140-2008 REF



REV	DATE	PART OR IDENTIFYING NO.	DESCRIPTION	MATERIAL/SPECIFICATION	QTY	ITEM NO.	
PARTS LIST							
TOLERANCES UNLESS OTHERWISE NOTED DIMENSIONAL FRACTIONS XX ± .01 DECIMALS ANGLES ± 0° 30'							
KITT PEAK NATIONAL OBSERVATORY ASSOCIATION OF UNIVERSITIES FOR RESEARCH IN ASTRONOMY, INC. 1000 UNIVERSITY DRIVE NATIONAL SCIENCE FOUNDATION							
TEST ASSEMBLY 2150-140-2002						NAME INSTALLATION-HANDLING MECHANISM SAFETY NET	FILE NO. 7157
SCALE 1/2"						DATE 2150-140-2104	

THIS DRAWING IS NOT CHECKED