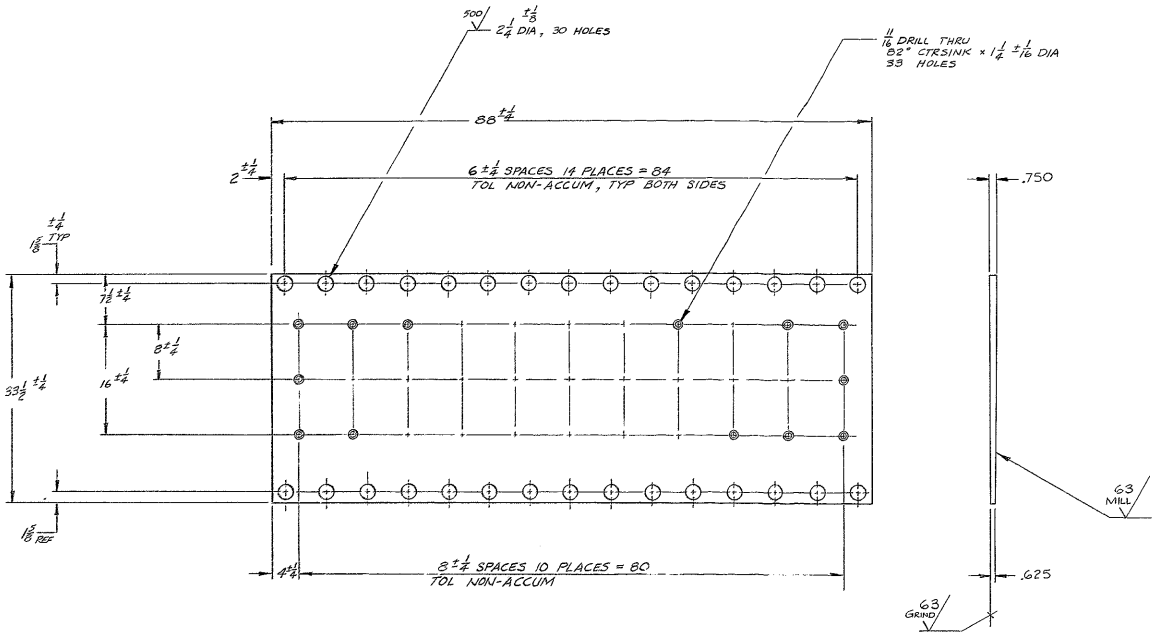


THIS DOCUMENT CONTAINS INFORMATION PROPRIETARY TO WESTERN GEAR CORPORATION. ALL DESIGN, MANUFACTURING, REPRODUCTION, USE, PATENT, AND TRADE RIGHTS REGARDING THE SAME ARE HEREBY EXPRESSLY RESERVED BY WESTERN GEAR CORPORATION. THIS DOCUMENT IS ISSUED FOR REFERENCE PURPOSES ONLY AND SHALL NOT BE DISCLOSED TO ANY UNAUTHORIZED PERSON OR INCORPORATED INTO ANY OTHER RECORD.

REVISIONS			
ZONE	LTR	DESCRIPTION	DATE APPROVED
A		REL. FOR MANUFACTURE	6/25/76 G.R.



NEXT ASSY: KPND 2150.140E007 (W.G. N 102895)

REV 1157

FIND NO.	PART NO.	DESCRIPTION	QTY	MATERIAL	CODE
LIST OF MATERIAL (LM)					
LIMITS ON MACHINED DIMENSIONS EXCEPT AS NOTED		150 th Telescope Mounting			
ANGULAR ± = 10'		WESTERN HEAVY MACHINERY DIVISION			
LINEAR:		EVBRETT, WASHINGTON			
X = ± 1		XXX = ± .010		DRAWN <i>E. Buss</i> 6/28/76	
XX = ± .03		FRACTIONAL = ± 1/32		CHECK	
BREAK ALL SHARP EDGES		ENGR		SUPPORT PLATE, R.A. DRIVE -	
MATERIAL STEEL		BASE FRAME			
ASTM A-56 OR EQ.					
APPROVED		W.G. D 303046		SIZE CODE IDENT NO.	
				D 16603	
				2150.140D032 A	
				REV	
				SCALE 1/8 WT LB SHEET / OF /	