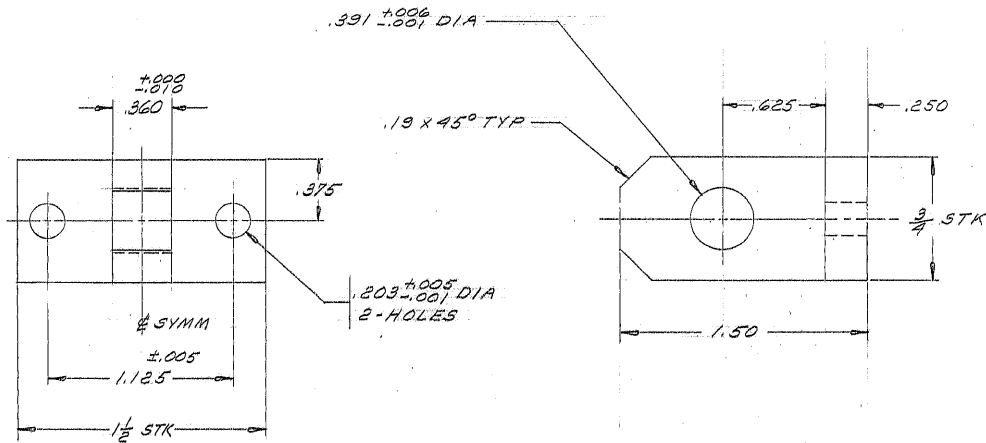


NOTES: UNLESS OTHERWISE NOTED

1. REMOVE ALL BURRS AND SHARP EDGES $\frac{.020}{R}$ MAX
2. MACHINED SURFACE ROUGHNESS $\frac{125}{\sqrt{}}$
3. MATL: C-1018 STEEL FLAT,
COND CF

REVISIONS

LTR	DESCRIPTION	ECR	DATE	BY	APVD



TOLERANCES UNLESS OTHERWISE NOTED
 DECIMALS FRACTIONS ANGULAR
 .XX ± .03 ± — ± 0° 30'
 .XXX ± .010 ± — ± 0° 30'

KITTY PEAK NATIONAL OBSERVATORY

OPERATED BY THE
 ASSOCIATION OF UNIVERSITIES FOR RESEARCH IN ASTRONOMY, INC.
 UNDER CONTRACT WITH
 NATIONAL SCIENCE FOUNDATION

NEXT ASSEMBLY
 2150.140
 E104

NAME

EYE BRACKET

REF
 FILE

1157/1530

SCALE E:1

DESIGNED BY
 HAGAR

DATE
 5-28-76

APPROVED BY
 H.A. R. J.

DATE
 7-26-76

DWG NO.

2150.140B047

REV

PRINT ISSUED

DRAWN BY
 HAGAR

DATE
 5-28-76

APPROVED BY

DATE

RELEASED

JUL 28 1976

2150 7-26-76