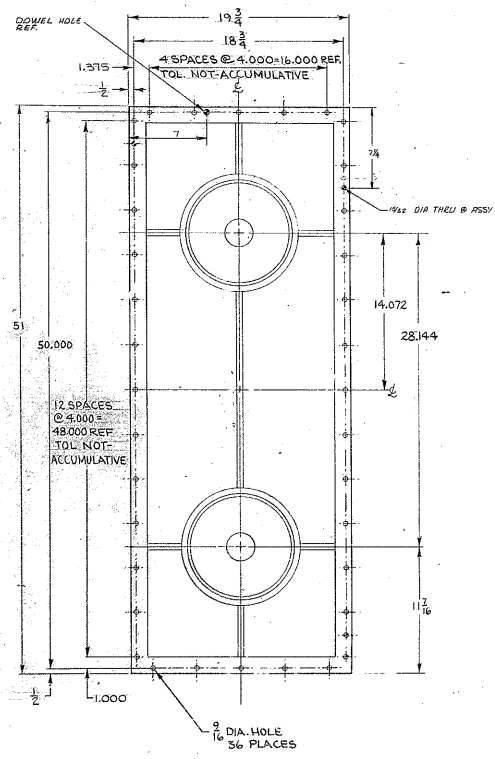
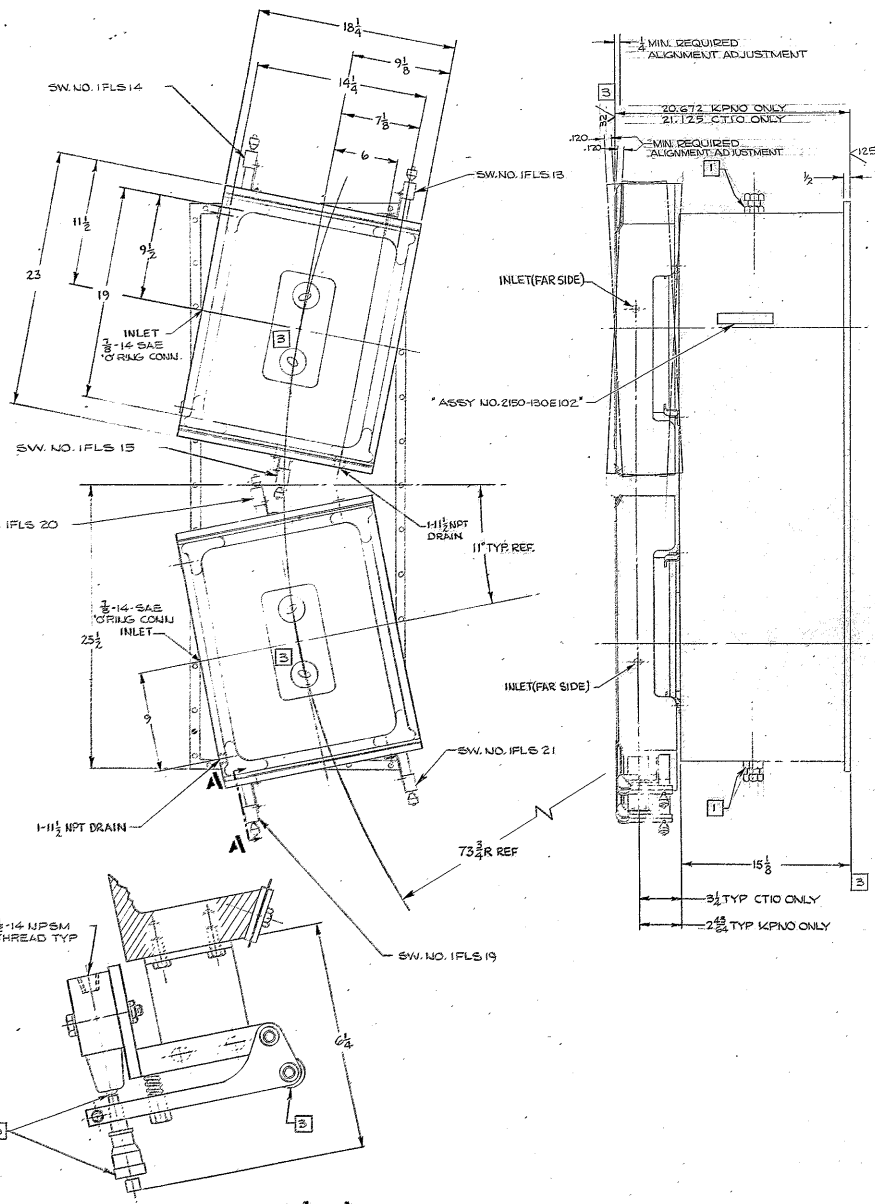


REVISIONS:			
ZONE	LT#	DESCRIPTION	DATE APPROVED
A		REVISED PER AURA APPR. CONST. PRINT DATED 4-24-68	
B7		2 DIA HOLE SIZE	8-28-68 GR
C3		3/4 DIA HOLE SIZE	1-7-70 GR
G-5		ADDED 20.672 KPNO DIM (NOTED CTIO DIM)	
G-5		ADDED 24.814 KPNO DIM (NOTED CTIO DIM)	
G-5		ADDED 120.4% ADJUSTMENT ALLOWANCES	
G-5		ADDED 120.4% ADJUSTMENT ALLOWANCES	
D		ADDED 1/16 DIA THRU, COVER, NOTE DELETED DIA & CLEARANCE	1/11/68 LD
		278 HOLE GR	



- NOTES:
1. LOOSEN BOLTS TO DISENGAGE AFTER FINAL ASSY (2 PLACES), AND LOCK IN DISENGAGED POSITION WITH TAM NUT
 2. ALL DIMENSIONS ARE IN INCHES
 3. ALL SURFACES ARE FINISH PAINTED PER W.G.C. SPEC. NO. 511 EXCEPT WHERE MARKED THUS [B]
 4. ALL LIMIT SWITCHES ARE IDENTIFIED WITH SW. NO. AS SHOWN
 5. NORMAL OPERATING LOAD 158,000 LBS. MAX OIL PRESSURE 1500 PSI AT LIFT OF 500 PSI AT RUNNING CONDITIONS OIL 150 @ 50 AT 100 °F

SECTION A-A
SCALE: 1/4"

NEXT ASSY		2150.101E001 (WGN 102,805)		2150.100E001 (WGN 102,804)	
FINO NO.	PART NO.	DESCRIPTION	QTY	MATERIAL	CODE IDENT
LIST OF MATERIAL (L/M)					
150" STELLAR TELESCOPE MOUNTING					
WESTERN GEAR CORPORATION					
HEAVY MACHINERY DIVISION					
EVERETT, WASHINGTON					
OUTLINE - SOUTH HYDROSTATIC THRUST BEARING R/1					
WGN 102.816		E 16603		2150.130E101	
APPROVED		ORIG		SCALE 1/4" = 1"	

WESTERN GEAR CORPORATION
CONSTRUCTION PROJECTS
DEPARTMENT
APPROVED FOR PROCUREMENT

REV. 1156