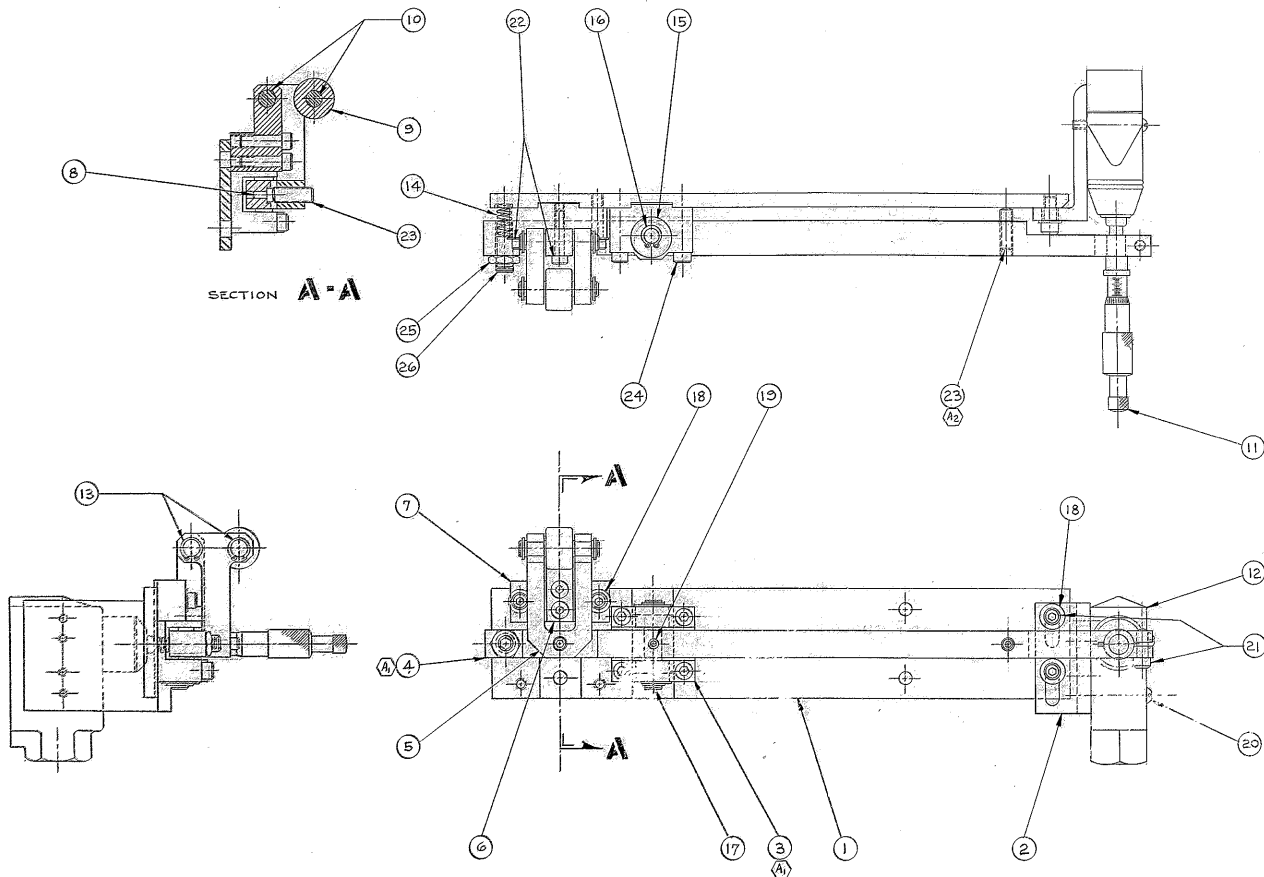


BILL OF MATERIAL

ITEM	QTY	MATERIAL	DESCRIPTION	WEIGHT
------	-----	----------	-------------	--------



- 5-BREAK SHARP-EDGES
- 1-IDENTIFY BY _____ AT LOCATION "MADE IN U.S.A."
- 3-STAMP MATCH MARKS ON ALL MATING PARTS WHERE NECESSARY.
- 2-PROJECT DRAWINGS
- 1-FOR NEXT ASSY. SEE 2150.130-E.202 (2120-KD50)

NOTES:

TOLERANCES UNLESS OTHERWISE NOTED	
DECIMAL DIMENSIONS	±.0005
FRACTIONAL DIMENSIONS UP TO 1/8"	±.001
1/8" TO 1/2"	±.002
1/2" & OVER ± 1/16"	±.005
ANGLES ±.05°	
ALL SURFACES TO HAVE 125 FINISH UNLESS OTHERWISE NOTED.	
A 1) REVERSED ITEM NOS. (3) & (4) COMP. 1-4-78	
2) ADDED ANOTHER SCREW ITEM (2)	
LET. REVISION ECH DATE BY	

KITT PEAK NATIONAL OBSERVATORY
 OPERATED BY THE ASSOCIATION OF UNIVERSITIES FOR RESEARCH IN ASTRONOMY, INC.
 UNDER CONTRACT WITH NATIONAL SCIENCE FOUNDATION

150 INCH STELLAR TELESCOPE REF. 1156
 NAME THRUST BEARING PAD SCALE FULL
 LIMIT SWITCH ASSY-INNER R.H. PRINT ISSUED

DESIGNED BY	DATE	PROJECT NO.	DATE	DRAWING NUMBER
25-11-68	12-27-70	2150-130	12-27-70	2150.130-D402 A
CHECKED BY	DATE	APPROVED BY	DATE	APPROVED BY
21-28-68	12-27-70	21-28-68	12-27-70	21-28-68