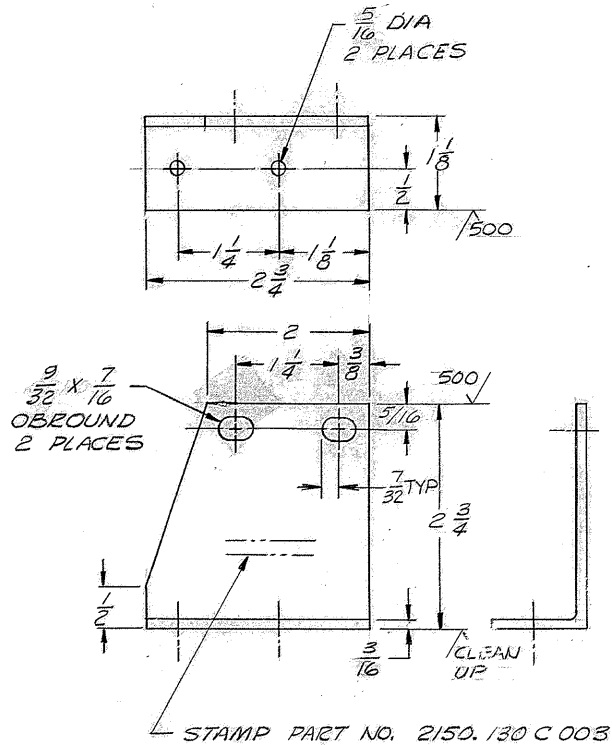


REVISIONS				
ZONE	LTR	DESCRIPTION	DATE	APPROVED
	A	REVISED PER AURA APPR. CONST. PRINT DATED 4-24-68		



STAMP PART NO. 2150.130 C 003

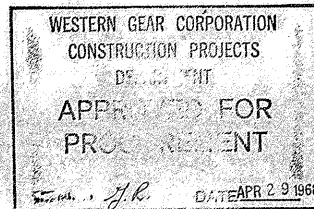
NOTES:

1. ALL DIMENSIONS ARE IN INCHES.
2. APPLY ONE (1) PRIME COAT PER W.G.C. SPEC. 511

REF. FILE 1156

2150.130 E 202 (W.G. N 102918)

NEXT ASSY 2150.130 E 102 (W.G. N 102917)



FIND NO.	PART NO.	DESCRIPTION	QTY	MATERIAL	CODE IDENT
LIST OF MATERIAL (LM)					
LIMITS ON MACHINED DIMENSIONS EXCEPT AS NOTED ANGULAR = ± 1° 0'		150 IN. STELLAR TELESCOPE MOUNTING			
LINEAR: X = ± .1      .XXX = ± .010 XX = ± .03    FRACTIONAL = ± 1/32		DRAWN BY: P. Coopers 3-18-68 CHECK: F.W.N. 3-18-68			
BREAK ALL SHARP EDGES		ENGR			
MATERIAL 5TL ANGLE ASTM A7 2 3/4 X 2 X 3/16 X 2 3/4 LG OR EQUIV.		W.G.D 107338			
APPROVED		SIZE: CODE IDENT NO. <b>C 16603</b> 2150.130 C 003		REV A	
SCALE 1/1		WT		LB SHEET 1 OF 1	

**Western**  
GEAR CORPORATION

HEAVY MACHINERY DIVISION  
EVERETT, WASHINGTON

BRACKET, SWITCH  
HYDROSTATIC THRUST BEARING