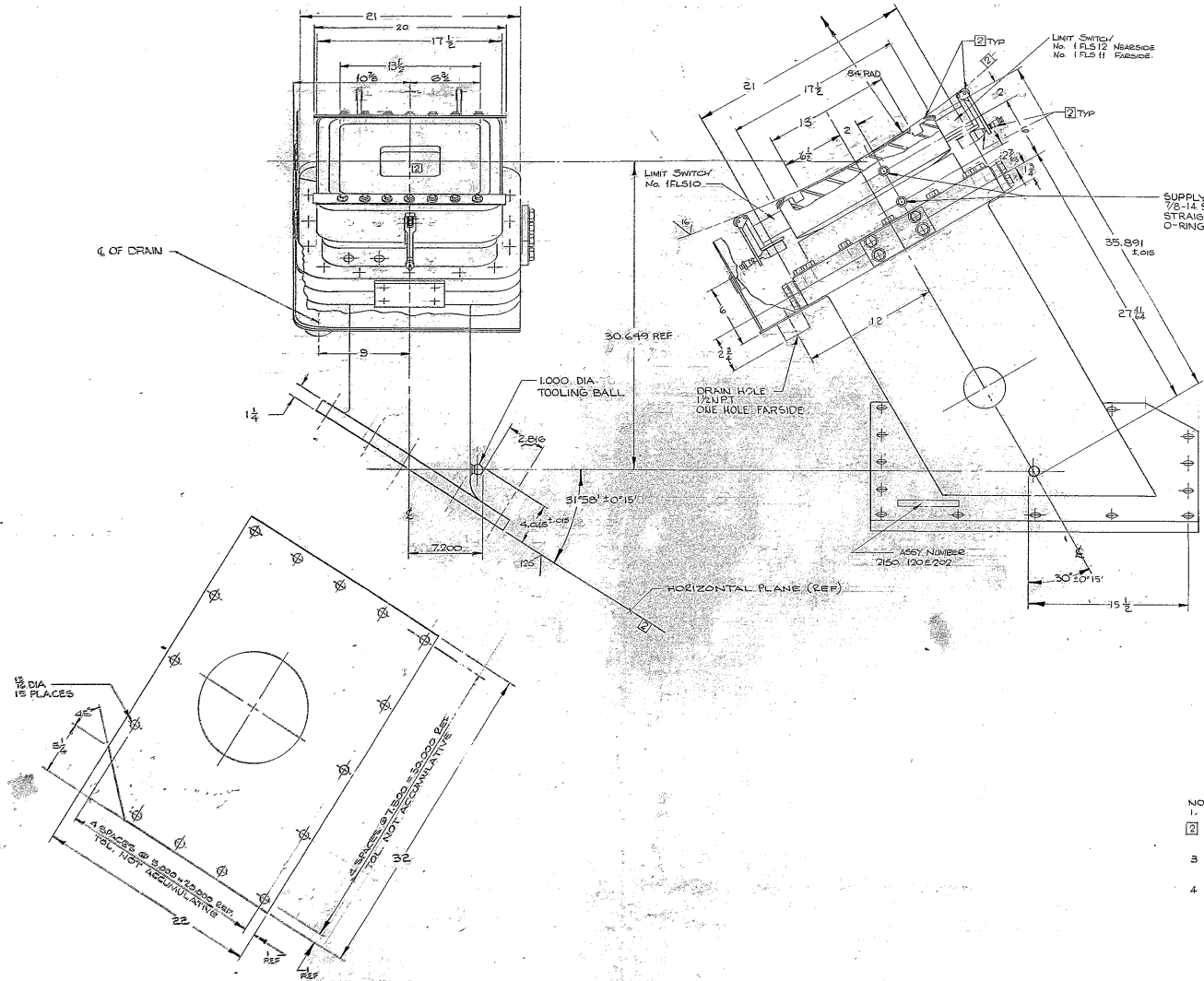


		REVISIONS	
ZONE	LTR	DESCRIPTION	DATE APPROVED
A		REMOVED BOTH DRAIN HOLES ON PAD BEARING. ROTATED SUPPLY OIL SUPPLY HOLE 90° CLOCKWISE ON PAD BEARING. BABBIT OUTER EDGE TRIMMED TO INNER EDGE OF TROUGH ON PAD BEARING. REMOVED BOTH DRAIN HOLES ON SUPPORT BEARING. REVISED OIL PLAN.	4-28-74 JWH
B		DESIGNED PER AURA APPROVED CONST. PAINT.	5-3-74
EF	C	2.016 INCHES 3.75	1-27
F4	D	RELOCATED SUPPLY CONNECTIONS "AS BUILT"	2-11-74 JW
E		CONNECTED PICTORIALY DELETED DRAIN HOLES	1-15-75 LGS



- NOTES:
1. ALL DIMENSIONS ARE IN INCHES.
  2. ALL SURFACES ARE FINISH PAINTED PER WGC SPEC #51 EXCEPT WHERE NOTED THIS [2].
  3. ALL LIMIT SWITCHES ARE MARKED WITH IDENTIFICATION NUMBERS AS SHOWN.
  4. NORMAL OPERATING LOAD 42,500 LBS. MAX. OIL PRESSURE 1500 PSI AT LIFT OFF & 300 PSI AT RUNNING CONDITIONS. OIL ISO S.A.U AT 100°F.

WESTERN GEAR CORPORATION  
 CONSTRUCTION PROJECTS  
 DEPARTMENT  
 APPROVED FOR  
 PROCUREMENT  
 DATE 1/16/75

2150.101E001 (WGN 102805)		NEXT ASSY 2150.100E001 (WGN 102804)			
ITEM NO.	PART NO.	DESCRIPTION	QTY	MATERIAL	CODE
LIST OF MATERIAL (L/M)					
LIMITS ON MACHINED DIMENSIONS EVERY IS NOTED ANGULAR = ± 1°		150 IS STELLAR TELESCOPE MOUNTING		WESTERN HEAVY MACHINERY DIVISION EVANETT, WASHINGTON	
LINEAR ± .001 200 ± .002 200 ± .002 FRACTIONS ± 1/32		DRAWN BY HANLSON JAN. 65 CHECKED BY [ ] ENG. [ ]		OUTLINE, SOUTH HYDROSTATIC RADIAL BEARING ASSY, LH	
FABRICATION TOLERANCE EXCEPT AS NOTED 0 TO 10 INCHES ± 1/16 10 TO 50 INCHES ± 1/32 50 TO 100 INCHES ± 1/64		WGN 102.815		SIZE CODE IDENTIFY E 16603 2150.100E201	
APPROVED [ ]		SCALE 1/2" = 1"		REV E	