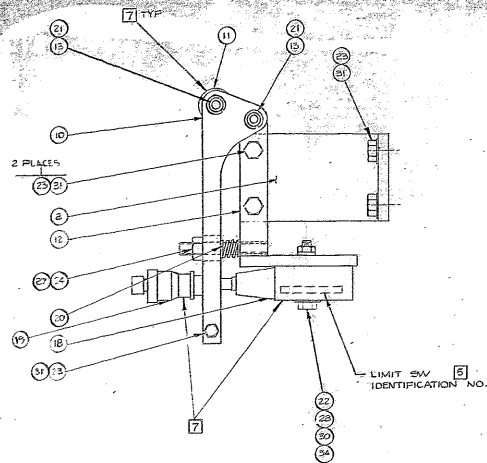
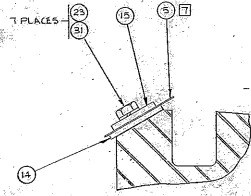


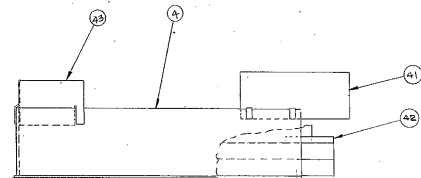
REVISIONS				
NO.	DATE	DESCRIPTION	BY	APP'D
A		REVISED PER AURA		
B		APPROVED CONST PRINT		
C		ITEM 34 ADDED		
D		REVISED BOLT DETAIL		
D7		ADDED PIN 31, 32, & 33		
E		REVISED PIN 31, 32, & 33		
F		ADDED PIN 34		
G		ADDED PIN 35		
H		ADDED PIN 36		
I		ADDED PIN 37		
J		ADDED PIN 38		
K		ADDED PIN 39		
L		ADDED PIN 40		
M		ADDED PIN 41		
N		ADDED PIN 42		
O		ADDED PIN 43		
P		ADDED PIN 44		
Q		ADDED PIN 45		
R		ADDED PIN 46		
S		ADDED PIN 47		
T		ADDED PIN 48		
U		ADDED PIN 49		
V		ADDED PIN 50		
W		ADDED PIN 51		
X		ADDED PIN 52		
Y		ADDED PIN 53		
Z		ADDED PIN 54		



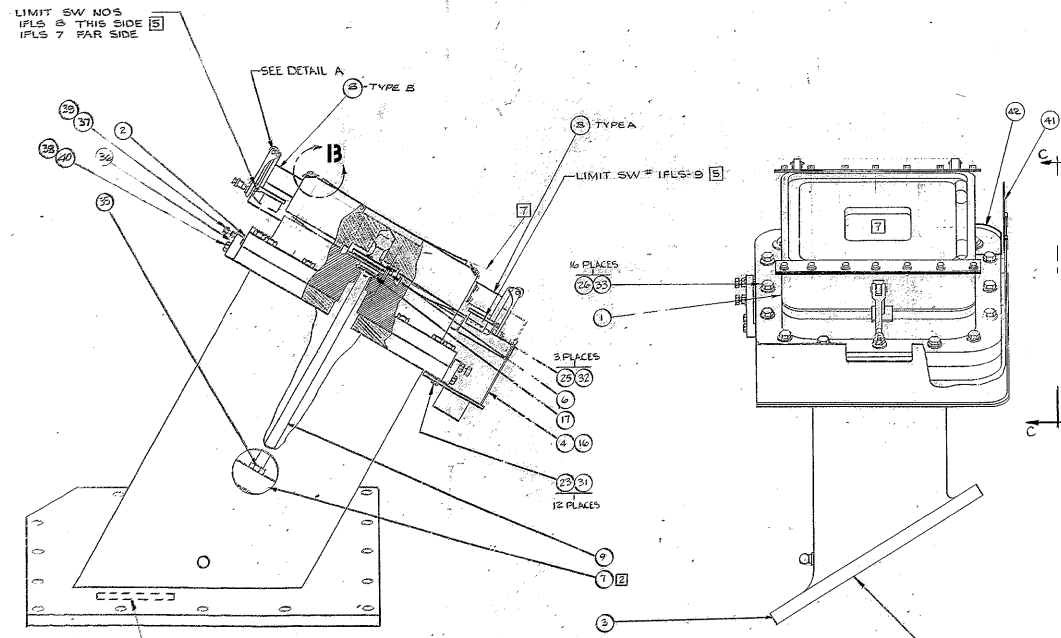
**DETAIL A**  
SCALE: 1/1  
3 PLACES



**DETAIL B**  
SCALE: 1/1  
2 PLACES



VIEW CC



- NOTES:
- 1 THE FINISHED RABBIT SURFACE TO MATCH THE BEARING SURFACE OF THE SOUTH JOURNAL (DWG. NO. 2150), SUCH THAT THE .003/.003 OIL FILM WILL BE MAINTAINED BETWEEN THE SOUTH JOURNAL AND THE BEARING TO INSURE NO CONTACT DURING ROTATION.
  - 2 ADJUST POSITION OF BALANCE WEIGHTS ITEM 1 TO BALANCE ITEM 1, DURING SHOP TEST
  - 3 MATCH LAP ITEMS 1 & 2 FOR 75% MIN. CONTACT AREA.
  - 4 OXY LUBE SPHERICAL 1 SURFACE WITH MOLY COTE OR EQUIV.
  - 5 MARK LIMIT SWITCHES WITH IDENTIFICATION NOS AS SHOWN USING RUBBER STAMP AND EPOXY INK.
  - 6 PROTECT ALL UNPAINTED SURFACES WITH BRAYCOTE B1 #105 RUST PREVENTATIVE COMPOUND BEFORE SHIPPING
  - 7 APPLY SECOND COAT OF PRIME PAINT AND TWO COATS OF FINISH ENAMEL PER W.G.C. SPEC # 511 EXCEPT WHERE NOTED THUS. [7]

LIMITS ON UNDIMENSIONED DIMENSIONS EXCEPT AS NOTED		LIST OF MATERIAL (L/M)	
LINEAR = ± .005	ANGULAR = ± 1°	1/8 INCH STELLAR TELESCOPE MOUNTING	WESTERN HEAVY MACHINERY DIVISION EVERETT, WASHINGTON
3X = ± .01	300X = ± .001	DRIVEN LIP HOOD	ASSEMBLY, R/H SOUTH HYDROSTATIC BEARING
LINE = ± .005	FRACTIONAL = ± 1/16	END	
BREAK ALL SHARP EDGES		WGN102860	SIZE CODE IDENT NO. E 16603 2150-120E 102
MATERIAL		APPROVED	ORIG SCALE 1/2 IN 1/800 LB SHEET 1 OF 1

WESTERN GEAR CORPORATION  
CONSTRUCTION PROJECTS  
DESIGN  
APPROVED FOR PROCUREMENT  
DATE 3/6/62

B M 2150.120 & 102 (W.G.C. 112.015)  
2150.101 & 002 (W.G.N. 102.046)  
NEXT ASSY 2150.100E 002 (W.G.N. 102.045)

IN  
No. 1152