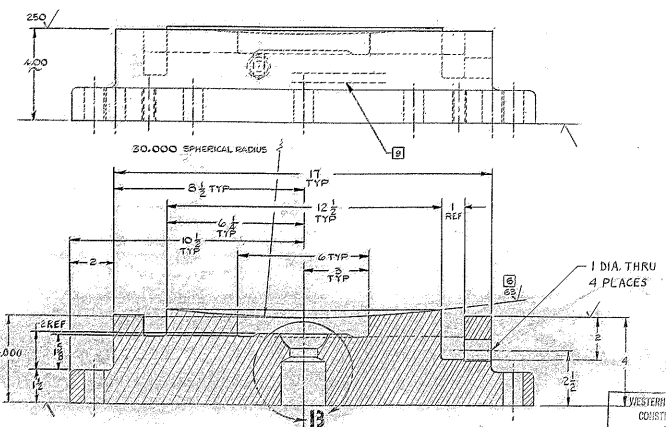
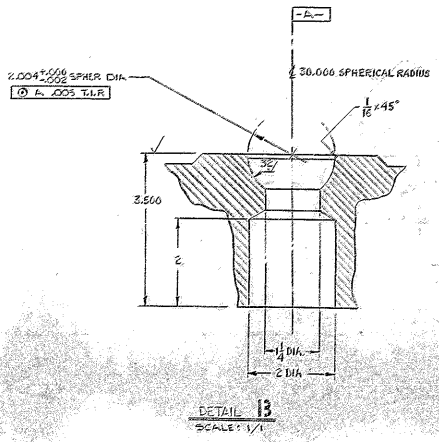


SECTION C-C

REV	DATE	DESCRIPTION	APPROVED
A	12/12/62	REVISED PER AURA APPROVED CONST PRINT	
B	1/11/63	DELETED CALLOUT 1.344 DIA BEAM	
C	1/11/63	ADD CALLOUT FOR (4) 7/8 TAPPED HOLES 7 (TYP) DIM (1.2) (2.5)	

- NOTES:
- CASTING TOLERANCE 1/6 EXCEPT AS NOTED
  - FILLET RADIUS 1/8 EXCEPT AS NOTED
  - DRAFT ANGLE 1/16 TYP
  - PATTERN MAKER TO ALLOW MATERIAL FOR MACHINING AT ALL SURFACES MARKED V
  - PATTERN NO. 2150-120E 006
  - ALL SURFACES MARKED V TO BE R3 EXCEPT AS NOTED
  - ALL DIMENSIONS ARE IN INCHES
  - MATCH LAT THIS 45° SPHERICAL SURFACE TO MATCHING SURFACE OF PAD, BEARING FOR 75% MIN. CONTACT, (DIM 2150.120E005) RECORD BY SKETCH OR PHOTOGRAPH.
  - APPLY ONE COAT PRIMER PAINT ALL OVER PER HGC SPEC #511 BEFORE MACHINING.
  - RADIOGRAPHIC INSPECT PER ASTM E166 CLASS 3.
  - CAST IN PART NO. 1/4 HIGH CHARACTERS RAISED .03.



WESTERN GEAR CORPORATION  
CONSTRUCTION PROJECTS  
EQUIPMENT  
APPROVED FOR  
PROCUREMENT  
DATE 12/12/62

FIG. NO.	PART NO.	DESCRIPTION	QTY.	MATERIAL	CODE	DEPT.
<p>NEXT ASSY: 2150.120E.202 WGN 102864 2150.120E.102 WGN 102860</p>						
<p>LIST OF MATERIAL (L.M.)</p>						
<p>LIMITS ON MACHINED DIMENSIONS EXCEPT AS NOTED ANGULAR ± 1/10° 2X ± 0.1 300 ± 0.20 20 ± 0.01 FRACTIONALS ± 1/128 ENGR. [Signature]</p>		<p>150 INCH STELLAR TELESCOPE MOUNTING. DRAWN BY JOHNSON CHECKED BY [Signature]</p>		<p>WESTERN GEAR CORPORATION HEAVY MACHINERY DIVISION EVERETT, WASHINGTON SUPPORT BEARING SOUTH HYDROSTATIC BEARING</p>		
<p>ASTM A27-65 GRADE 70-40 NORMALIZE &amp; TEMPER</p>		<p>WGN 102882</p>		<p>SIZE CODE IDENT. NO. E 16603 2150.120E.006 C</p>		
<p>APPROVED [Signature]</p>		<p>DATE 12/12/62</p>		<p>SCALE: 5/8"=1" WT 433 LB SHEET 1 OF 1</p>		