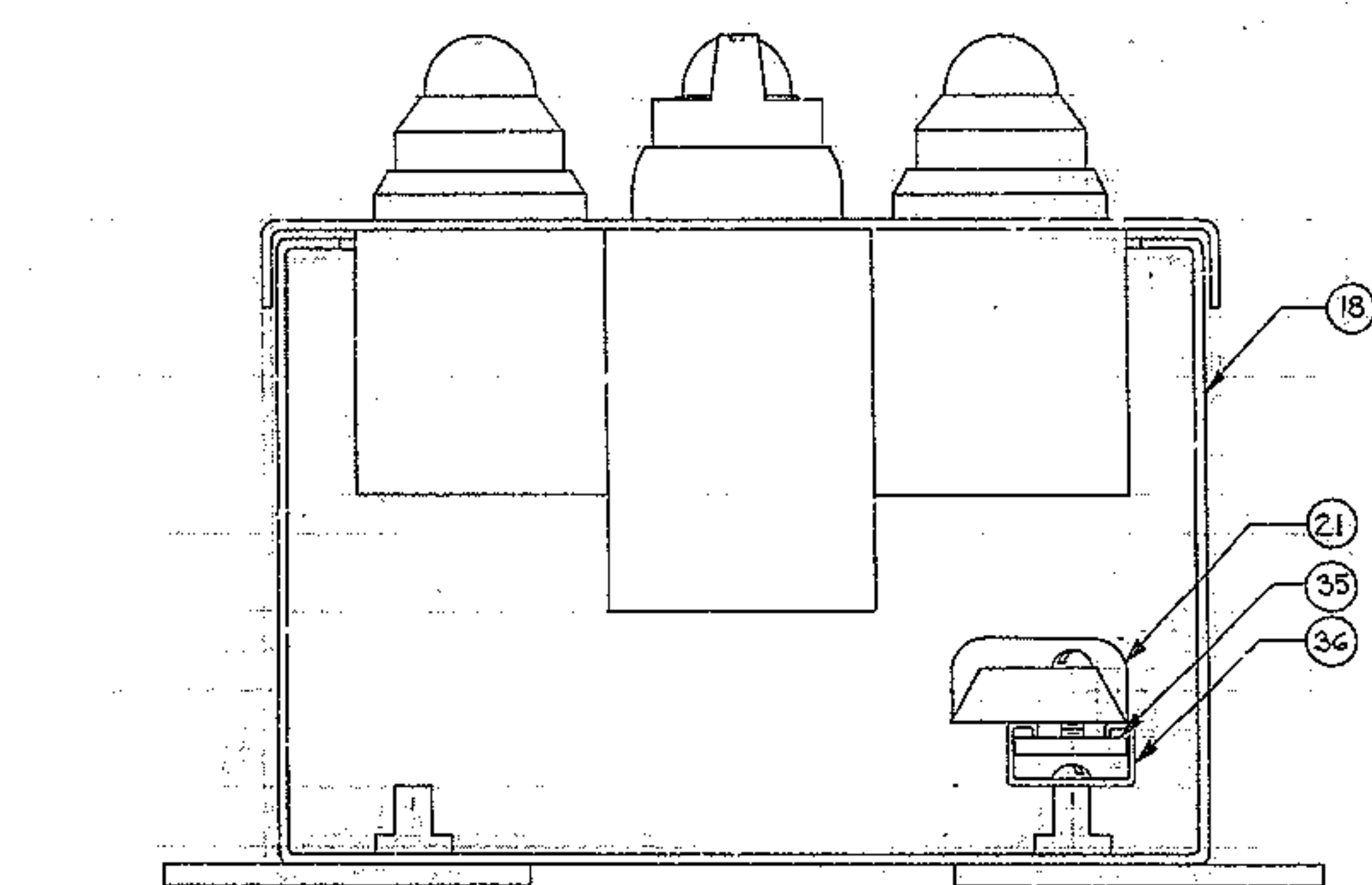
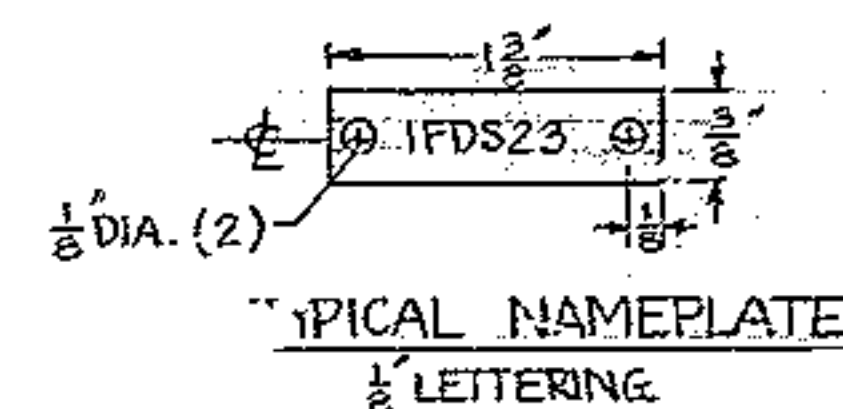


WIRING DIAGRAM



SECTION A-A



NAMEPLATE SCHEDULE				
LOCATION	M	A	B	C
NE RAD	1	1	2	3
NW RAD	2	4	5	6
SE RAD	3	7	8	9
SW RAD	4	10	11	12
SE TH UP	5	13	14	15
SW TH UP	6	16	17	18
SE TH DW	7	19	20	21
SW TH DW	8	22	23	24

PART NO.	DESCRIPTION	MATERIAL	QTY
58	NAMEPLATE - PER SCHEDULE	BLACK PHENOLIC WITH WHITE CORE	4
57	NAMEPLATE (RUN TEST)	FOR USE WITH BOOT SWITCH	1
36	CHANNEL 4 7/8" LONG	POWER STRUT # PS700	1
35	CHANNEL NUT	POWER STRUT # PS700-0832	2
25	INDICATING LIGHT COLOR CAP	G.E. # CR2340U200DH	3
21	9 POINT TERMINAL BLOCK	MARATHON 200 SERIES	1
20	2 POSITION SELECTOR SWITCH	ALLEN-BRADLEY # 800T-H2B28	1
19	PANEL MOUNT INDICATING LIGHT	G.E. # CR2940UC212A12	3
18	ENCLOSURE 6"x6"x4"	HOFFMAN # A-606CH	1
BILL OF MATERIAL			

QUANTITIES NOTED ARE FOR ONE ASSY.

* FOR WIRING TO IFJBI SEE 2150.921-AC04 SHTS 243
FOR SCHEMATIC SEE 2150.940-AC06

NEXT ASSY: 2150.100-E002 (ITEM 21 - 3 REQ)
2150.101-E002 (ITEM 1 - 3 REQ)

REFERENCE DRAWINGS ENGR. SA DRAWN LFB CHECKED RECORDED 1-27-71 SCALE 1"=1"	REVISIONS NO. DESCRIPTION BY DATE 1 GENERAL REVISION BY 17 JUNE 71 2 BY
UNITED POWER & CONTROL SYSTEMS, INC. 431 North 34th, Seattle, Wash. 98107	
TITLE OUTLINE DIAGRAM FAULT BOX ASSY IF OPL1 THRU IF OPLB 150" STELLAR TELESCOPE	
DRAWING NO. 2150.100-E102 REV. NO. 3 SH. 1 OF	