

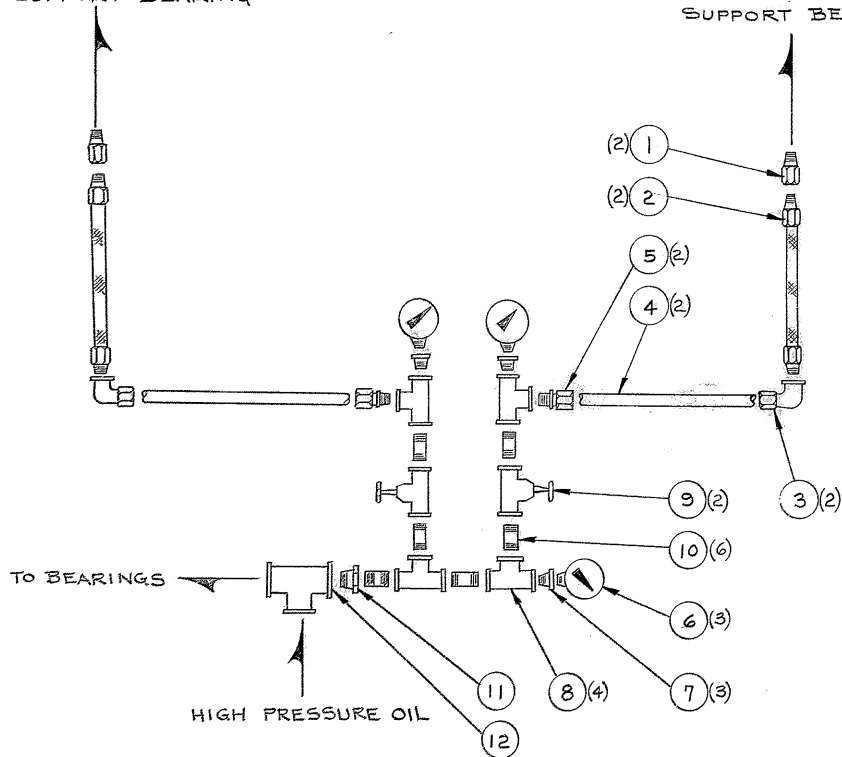
NOTES: UNLESS OTHERWISE NOTED

1. REMOVE ALL BURRS AND SHARP EDGES  $\text{---} R \text{ MAX}$
2. MACHINED SURFACE ROUGHNESS  $\frac{125}{\sqrt{\text{---}}}$

REVISIONS						
ZONE	LTR	DESCRIPTION	ECR	DATE	BY	APVD

EAST-SOUTH RADIAL  
SUPPORT BEARING

WEST-SOUTH RADIAL  
SUPPORT BEARING



1	1/4 TEE	12
1	1/4 x 1/2 BUSHING	11
6	1/2 NIPPLE	10
2	1/2 NPT FEM. NEEDLE VALVE, DRAGON 5007	9
4	1/2 TEE	8
3	1/2 x 1/4 BUSHING	7
3	U.S. GAUGE F500 1/4 LM 0-2000 PSI, 2 1/2 FACE	6
2	1/2 P-H MALE CONNECTOR 8-8 FBU-S	5
1	1/2 DIA STEEL TUBING	4
2	1/2 P-H FEMALE ELBOW 8-8 DBU-S	3
2	1/2 SAE 100 RI HOSE, PH 420101-8-8-36	2
2	1/2 P-H FEMALE ADAPTER 14-1/2 F50G-S	1

QTY REQD	PART OR IDENTIFYING NO.	DESCRIPTION	MATERIAL / SPECIFICATION	ITEM NO.
----------	-------------------------	-------------	--------------------------	----------

PARTS LIST

TOLERANCES UNLESS OTHERWISE NOTED  
 DECIMALS FRACTIONS ANGULAR  
 .XX ± .03 ± — ± 0° 30'  
 .XXX ± .010 ± — ± 0° 30'

KITT PEAK NATIONAL OBSERVATORY

OPERATED BY THE  
 ASSOCIATION OF UNIVERSITIES FOR RESEARCH IN ASTRONOMY, INC.  
 UNDER CONTRACT WITH  
 NATIONAL SCIENCE FOUNDATION

NEXT ASSEMBLY	NAME 150 INCH TELESCOPE SOUTH RADIAL SUPPORT BEARING OIL SUPPLY PIPING ASSEMBLY	REF FILE 1153
---------------	--	---------------

SCALE: NONE	DESIGNED BY D. SCHRAGER	DATE 8-11-71	APPROVED BY A.A.A.	DATE 2-12-73	DWG NO. 2150.100-C402	REV
PRINT ISSUED	DRAWN BY T.D. L. 23	DATE 6-12-73	APPROVED BY	DATE		
	CHECKED BY A.A.A.	DATE 6-12-73	APPROVED BY	DATE		
				RELEASE DATE 6-12-73		