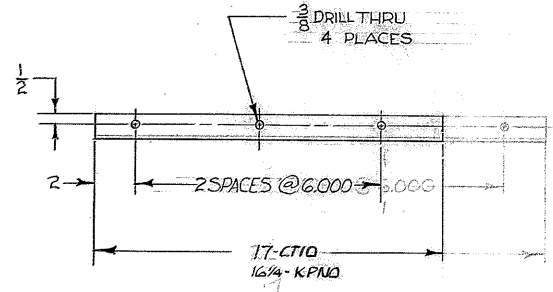


REVISIONS				
ZONE	LTR	DESCRIPTION	DATE	APPROVED
-	A	REL TO MFG	7/2/69	Wet
-	B	REVISED- AS BUILT	11/1/72	LDS



NOTES :

1. ALL DIMENSIONS ARE IN INCHES
2. STAMP: PART NO. 2150,100 COIL
3. APPLY ONE COAT OF PRIME PAINT ALL OVER PER WGC SPECIFICATION 511.

2150.100 E 002 (WGN 102 845)  
 NEXT ASSY : 2150.100 E 101 (WGN 102 846)

REF. FILE 1153

WESTERN GEAR CORPORATION  
 CONSTRUCTION PROJECTS  
 DEPARTMENT  
 APPROVED FOR  
 PROCUREMENT  
 JAL  
 DATE 10/20/67

FIND NO.	PART NO.	DESCRIPTION	QTY	MATERIAL	CODE IDENT
LIST OF MATERIAL (LM)					
LIMITS ON MACHINED DIMENSIONS EXCEPT AS NOTED ANGULAR = ± 1° 0' LINEAR: X = ± .1    XXX = ± .010 XX = ± .03    FRACTIONAL = ± 1/32		150 IN STELLAR TELESCOPE MOUNTING		 HEAVY MACHINERY DIVISION EVERETT, WASHINGTON	
BREAK ALL SHARP EDGES		DRAWN D. Thompson			
MATERIAL		CHECK <i>GH</i>		OIL PAN SUPPORT BASE ASSY	
STL. L 1/4 X 3/16 X 1/4 X 17 ASTM-A-7 OR EQ		ENGR		W.G.D. 107585	
		APPROVED		SIZE C	CODE IDENT NO. 16603
				WT 3	2150.100 COIL
				SCALE 1/4	REV B
				LB	SHEET 1 OF 1