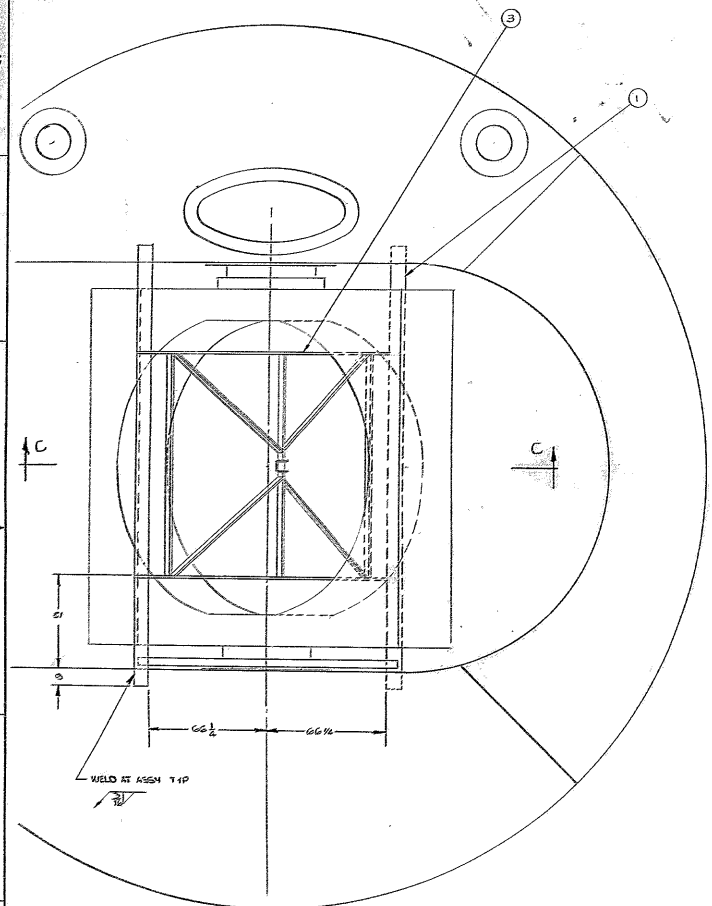
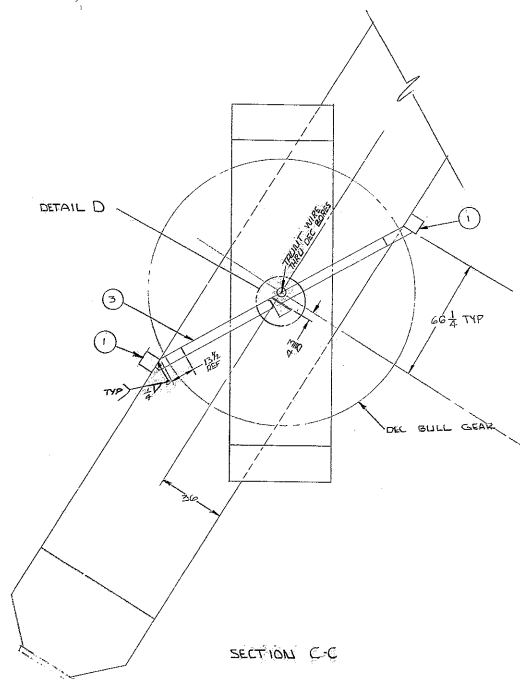


THIS DOCUMENT CONTAINS INFORMATION PERTINENT TO NATIONAL DEFENSE. IT IS THE PROPERTY OF WESTERN GEAR CORPORATION. REPRODUCTION OR TRANSMISSION IN ANY FORM OR BY ANY MEANS IS PROHIBITED WITHOUT THE WRITTEN PERMISSION OF WESTERN GEAR CORPORATION. THE DOCUMENT IS LOANED TO YOU BY THE NATIONAL ARCHIVES ON THE CONDITION THAT YOU WILL NOT REPRODUCE OR TRANSMIT IT IN ANY FORM OR BY ANY MEANS, ELECTRONIC OR MECHANICAL, INCLUDING PHOTOCOPYING, RECORDING, OR BY ANY INFORMATION STORAGE AND RETRIEVAL SYSTEM. THIS DOCUMENT IS NOT TO BE DISTRIBUTED OUTSIDE YOUR ORGANIZATION.

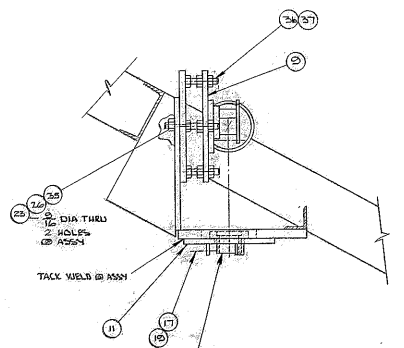
REVISIONS		DATE	APPROVED
ZONE	REV		



SECTION A-A



SECTION C-C



DETAIL D
1/4 SCALE

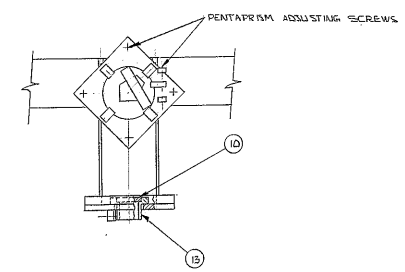


FIG. NO.	PART NO.	DESCRIPTION	QTY	MATERIAL	CODE
LIST OF MATERIAL (LM)					
LIMITS ON MACHINED DIMENSIONS UNLESS AS NOTED					
FINISH - AS FFG					
TOLERANCES - UNLESS OTHERWISE SPECIFIED					
± .001	± .002	± .005	± .010	± .015	± .030
FRACTIONAL = 1/32					
CHAMFER ALL SHARP EDGES					
MATERIAL					
Western GEAR CORPORATION HEAVY MACHINERY DIVISION EVERETT, WASHINGTON					
POLAR AXIS & DEC AXIS SITE ALIGNMENT					
WG E-300777		DATE		CODE	
APPROVED		E 16603		2150.005E130	
SCALE 1/4" = 1" WT					

REV 1152