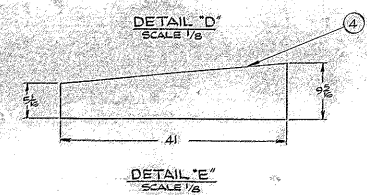
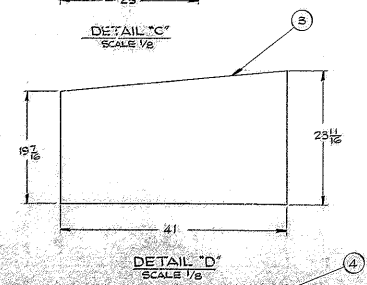
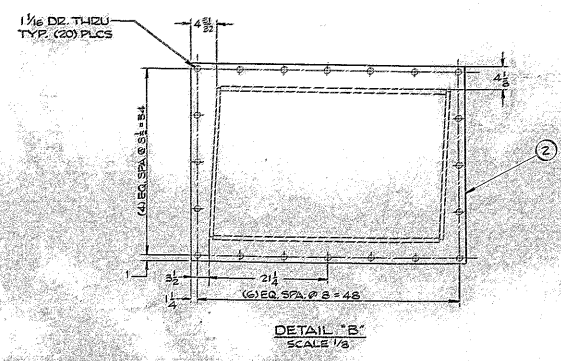
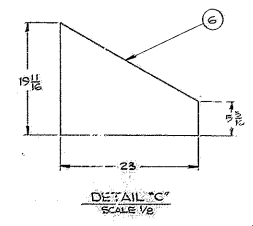
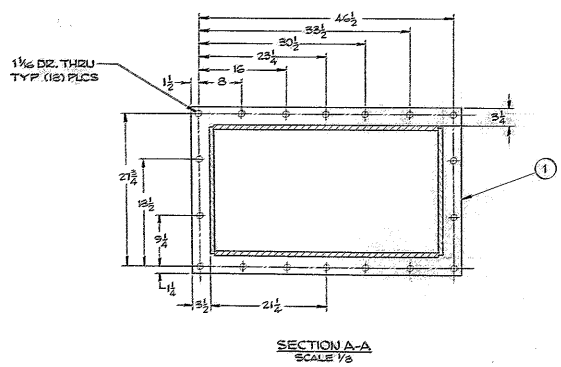
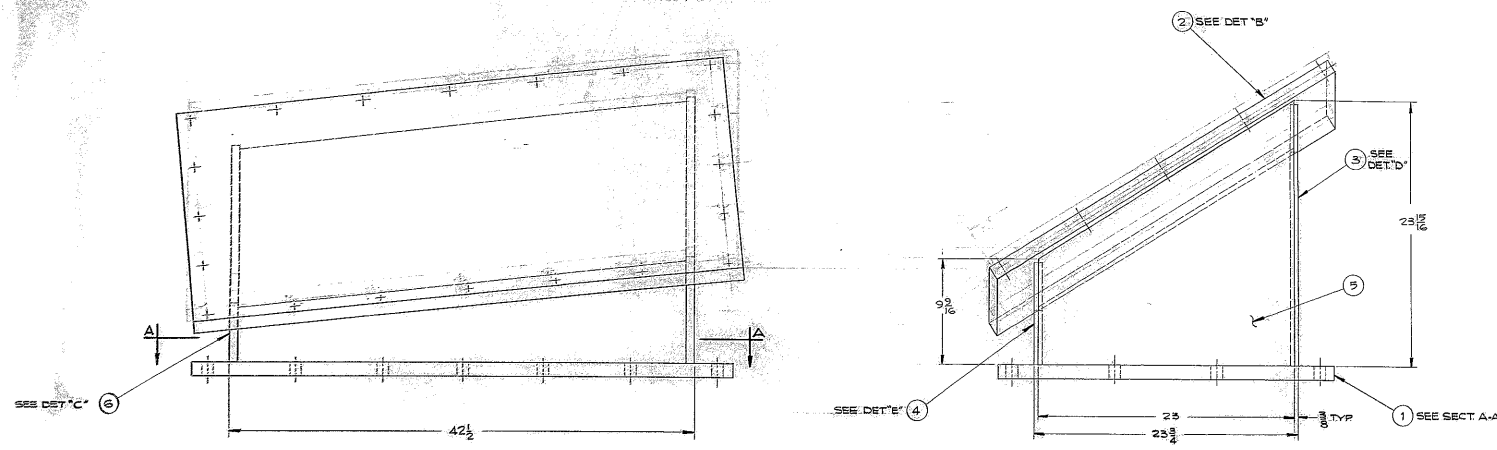


THIS DOCUMENT CONTAINS INFORMATION PROPRIETARY TO WESTERN GEAR CORPORATION. ALL RIGHTS RESERVED. NO PART OF THIS DOCUMENT IS TO BE REPRODUCED OR TRANSMITTED IN ANY FORM OR BY ANY MEANS, ELECTRONIC OR MECHANICAL, INCLUDING PHOTOCOPYING, RECORDING, OR BY ANY INFORMATION STORAGE AND RETRIEVAL SYSTEM. PERMISSION IS GRANTED TO MAKE A COPY OF THIS DOCUMENT FOR PERSONAL USE ONLY, AND SHALL NOT BE REPRODUCED OR TRANSMITTED IN ANY FORM OR BY ANY MEANS, ELECTRONIC OR MECHANICAL, INCLUDING PHOTOCOPYING, RECORDING, OR BY ANY INFORMATION STORAGE AND RETRIEVAL SYSTEM, WITHOUT THE WRITTEN PERMISSION OF WESTERN GEAR CORPORATION.

REVISIONS		DATE	APPROVED
ZONE	DESCRIPTION		
A	REVISED WIDTH DIMS, 1/4, 3, 4, 16	7-67	JDS
	RELOCATED 2, 2		



- NOTES:
1. ALL WELDS TO BE 3/8 CONTINUOUS.
 2. STEEL STAMP P/N 2150.005E128.
 3. FABRICATION TOLERANCES:
UP TO 10 INCHES ± 1/16
10 TO 50 INCHES ± 1/8
4. SHOT BLAST TO CLEAN UP.

AT EVERETT

1152

QTY	PART NO.	DESCRIPTION	MATERIAL	QTY	MATERIAL	CODE IDENT
1	PL 3/4 x 19 1/16 x 23		STL, ASTM A-36			
1	PL 3/4 x 23 x 23 1/16		STL, ASTM A-36			
1	PL 3/4 x 9 3/8 x 41		STL, ASTM A-36			
1	PL 3/4 x 23 1/16 x 41		STL, ASTM A-36			
1	PL 1 1/4 x 36 x 50 1/2		STL, ASTM A-36			
1	PL 1 1/4 x 30 1/2 x 49 1/2		STL, ASTM A-36			

LIST OF MATERIAL (LM)		WESTERN GEAR CORPORATION		HEAVY MACHINERY DIVISION EVERETT, WASHINGTON	
DATE OF MACHINING DIMENSIONS EXCEPT AS NOTED	ANIMAL = 20 P/P	BRANN V 1/11/66	14-5-71	LEFT HAND RADIAL SUPPORT TEST # 004-8	
UNITS = INCHES	FRACTIONAL = 1/32	CHK			
WAVELENGTH = 0.0005	FRACTIONAL = 1/32	ENR	5-11-65		
WAVELENGTH = 0.0005	FRACTIONAL = 1/32	ENR	5-11-65		
SEE L/M ABOVE		WGE 300768		SCALE 1/2	WT 1900 LB
		APPROVED		DATE 11/1/66	BY 1
				TEST 2150.005E128	BY A
				SCALE 1/2	WT 1900 LB