

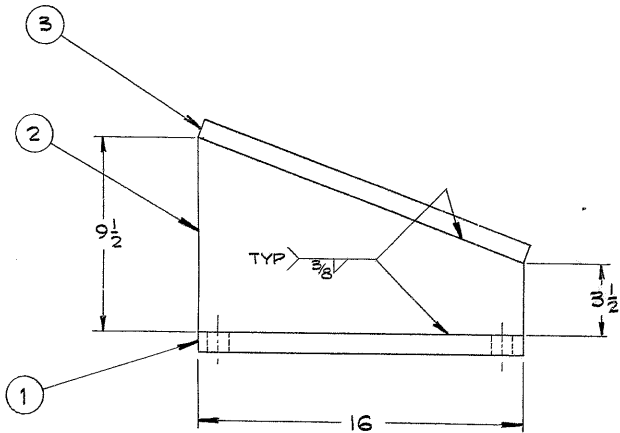
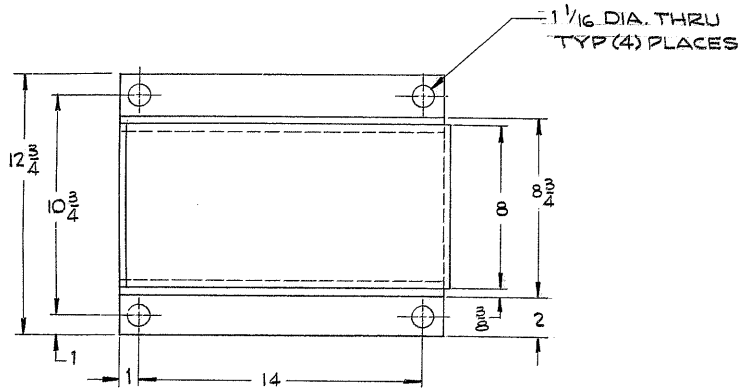
4

3

2

1

REVISIONS				
ZONE	LTR	DESCRIPTION	DATE	APPROVED



NOTES:

- 1 STEEL STAMP PART NO. 2150.005C225
- 2 SANDBLAST TO CLEAN UP.

AT EVERETT

REF.
-DC- 1152

3		R- 1 x 8 x 17/8	1	STL-ASTM A36	
2		R- 3/4 x 9 1/2 x 16	2	STL-ASTM A36	
1		R- 1 x 12 3/4 x 16	1	STL-ASTM A36	
FIND NO.	PART NO.	DESCRIPTION	QTY	MATERIAL	CODE IDENT
LIST OF MATERIAL (LM)					
LIMITS ON MACHINED DIMENSIONS EXCEPT AS NOTED ANGULAR = ± 1° LINEAR: X = ± .1 XXX = ± .010 .XX = ± .03 FRACTIONAL = ± 1/32		DRAWN White 2-18-71 CHECK ENGR SKILES		WESTERN GEAR CORPORATION HEAVY MACHINERY DIVISION EVERETT, WASHINGTON	
BREAK ALL SHARP EDGES		TELESCOPE MOUNT, UPPER RING GIRDER & SEC. ALIGN.			
MATERIAL		WGC302629		SIZE	CODE IDENT NO.
SEE L/M ABOVE		APPROVED		C	16603
				2150.005C225	REV
				SCALE 1/4"	WT 143 LB SHEET 1 OF 1