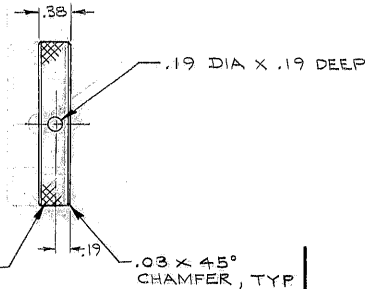
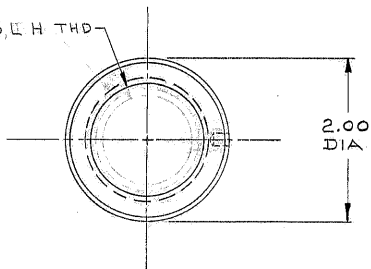


1 1/2-12 UNF-3B, L H THD



DIAMOND KNURL

LOCK NUT-LH
MAT'L: COLD ROLLED STL.
FINISH: C.D. PLATE

4-

3-IDENTIFY-BY _____ AT-LOCATION 3-"AURA-ING-MADE-IN-U.S.A."

2-STAMP-MATCH-MARKS-ON-ALL-MATING-PARTS-WHERE-NECESSARY.

1-FOR NEXT ASSY. SEE Z150.251-E202 & Z150.251-E302

NOTES-

				TOLERANCES UNLESS OTHERWISE NOTED DECIMAL DIMENSIONS .0000 ± .010 .0000 ± .003 FRACTIONAL DIMENSIONS UP TO 18" ± 1/64 18" TO 30" ± 1/32 30" & OVER ± 1/16 BREAK SHARP EDGES .03 ALL SURFACES TO HAVE ¹²⁴ FINISH UNLESS OTHERWISE NOTED.		KITT PEAK NATIONAL OBSERVATORY <small>OPERATED BY THE ASSOCIATION OF UNIVERSITIES FOR RESEARCH IN ASTRONOMY, INC. UNDER CONTRACT WITH NATIONAL SCIENCE FOUNDATION</small>	
				150 INCH STELLAR TELESCOPE		REF FILE 1152	
				NAME L. H. LOCK NUT- HORSESHOE & TUBE STAY BARS.		SCALE FULL PRINT ISSUED	
DESG BY: J.B.H. DATE: 12-28-70 DRN BY: D.L.B. DATE: 1-5-71 CVD BY: DATE: 2-1-71 LET. REVISION ON: ECR. DATE: BY:				APP'D BY: F. HEVBY DATE: 8-11-71 APP'D BY: DATE: 2-11-71 APP'D BY: DATE: 6-2-77		DRAWING NUMBER 2150.005-B405 REV. A	