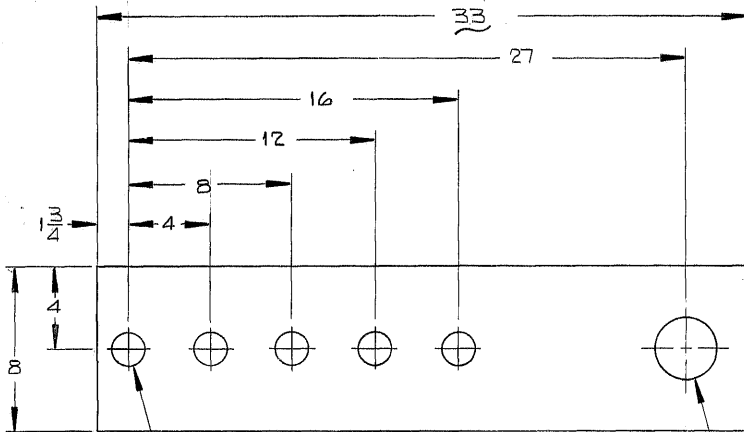


THIS DOCUMENT CONTAINS INFORMATION PROPRIETARY TO WESTERN GEAR CORPORATION. ALL DESIGN, MANUFACTURING, REPRODUCTION, USE, PATENT, AND SALES RIGHTS REGARDING THE SAME ARE HEREBY EXPRESSLY RESERVED BY WESTERN GEAR CORPORATION. THIS DOCUMENT IS SUBMITTED FOR REFERENCE PURPOSES ONLY AND SHALL NOT BE DISCLOSED TO ANY UNAUTHORIZED PERSON OR INCORPORATED INTO ANY OTHER PROJECT.

REVISIONS				
ZONE	LTR	DESCRIPTION	DATE	APPROVED



1 5/16 DIA THRU
(5) PLACES

3" DIA THRU
NEAT BURN

- NOTES:**
- 1) MATL - STL. 7 ASTM A-36
2" x 8 x 3 1/2
 - 2) SANDBLAST # PRIME
PAINT AFTER
MACHINING.

REF. FILE 1452

LIMITS ON MACHINED DIMENSIONS EXCEPT AS NOTED ANGULAR ± 1° 0' LINEAR .X = ± .1 .XX = ± .03 .XXX = ± .010 FRACTIONAL = 1/32 BREAK ALL SHARP EDGES	190" STELLAR TELESCOPE MOUNTING DRAWN <u>VAN DALEN</u> 11-29-71 CHECKED <u>W. BROWN</u> 11/24/71 ENGR W.G. B303467 APPROVED
--	--

WESTERN GEAR CORPORATION	HEAVY MACHINERY DIVISION EVERETT, WASHINGTON
LIFTING LUG	
LOWER HORSESHOE SECTION (CT10)	
SIZE B	CODE IDENT NO. 16603
SCALE 1/4	WT. 130 LB SHEET 1 OF 1