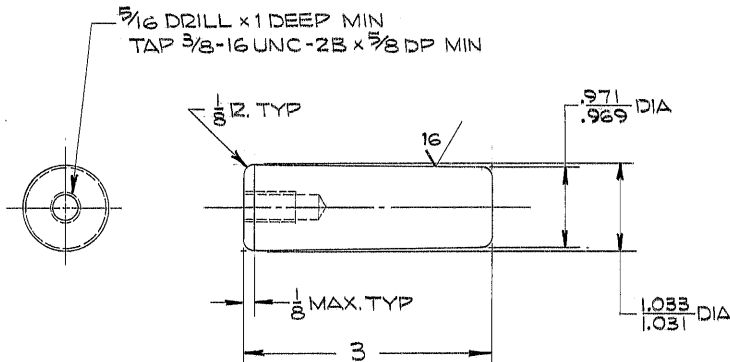


THIS DOCUMENT CONTAINS INFORMATION PROPRIETARY TO WESTERN GEAR CORPORATION. ALL DESIGN, MANUFACTURING, REPRODUCTION, USE, PATENT, AND SALES RIGHTS REGARDING THE SAME ARE HEREBY EXPRESSLY RESERVED BY WESTERN GEAR CORPORATION. THIS DOCUMENT IS SUBMITTED FOR REFERENCE PURPOSES ONLY AND SHALL NOT BE DISCLOSED TO ANY UNAUTHORIZED PERSON OR INCORPORATED INTO ANY OTHER PROJECT.

REVISIONS				
ZONE	LTR	DESCRIPTION	DATE	APPROVED



NOTES:

1. MATL: STD ALLOY STL. NO. 12
TAPER DOWEL PIN, 3" LONG.
(OPTION: AISI C1095 H.T. TO
350 BHN MIN. OIL QUENCH
FIZOM 1475°F, TEMPER AT
900°F).
2. ALL DIMENSIONS ARE IN
INCHES.
3. SMALL CENTERS ARE
PERMISSIBLE.
4. TAG WITH P/N 2150.005B293

SAME AS 2150.005B073

REF. FILE 1152

LIMITS ON MACHINED DIMENSIONS EXCEPT AS NOTED ANGULAR = 1°0' LINEAR X = ±.1 .XX = ±.03 .XXX = ±.010 FRACTIONAL = 1/32 BREAK ALL SHARP EDGES	DRAWN <i>White</i> 7/27/71	WESTERN HEAVY MACHINERY DIVISION GEAR CORPORATION EVERETT, WASHINGTON		
	CHECK	DOWEL, TAPER, NO. 12 3 IN. LONG		
	ENGR <i>SKILES</i>	SIZE B CODE IDENT NO. 16603	2150.005B293	REV
	APPROVED WGB302942	SCALE 1/1	WT.	LB SHEET 1 OF