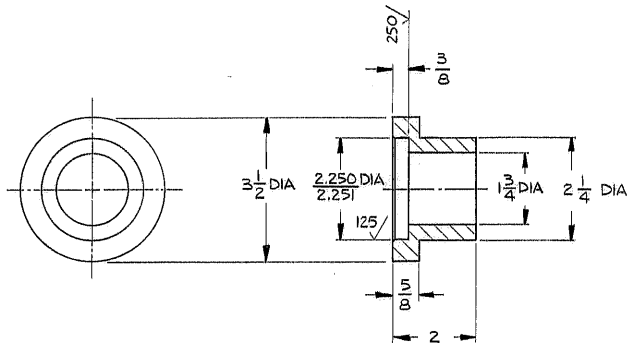


THIS DOCUMENT CONTAINS INFORMATION PROPRIETARY TO WESTERN GEAR CORPORATION. ALL DESIGN, MANUFACTURING, REPRODUCTION, USE, PATENT, AND SALES RIGHTS REGARDING THE SAME ARE HEREBY EXPRESSLY RESERVED BY WESTERN GEAR CORPORATION. THIS DOCUMENT IS SUBMITTED FOR REFERENCE PURPOSES ONLY AND SHALL NOT BE DISCLOSED TO ANY UNAUTHORIZED PERSON OR INCORPORATED INTO ANY OTHER PROJECT.



REVISIONS				
ZONE	LTR	DESCRIPTION	DATE	APPROVED

NOTES.

1. F.A.O. 500/ E.A.N.
2.  $\frac{1}{32}$  CHAM OR  $\frac{1}{16}$  R ALL CORNERS E.A.N.
3. MAT'L  $3\frac{1}{2}$  DIA x 2" LG MILD STL NO SPEC
4. STL STAMP P/N Z150.005B29Z

REF. 1152

2 @ SITE  
2 @ EVERETT

NEXT ASSY (2150.005 E 130) WG E 300777

LIMITS ON MACHINED DIMENSIONS EXCEPT AS NOTED  
 ANGULAR  $\pm 1^{\circ} 0'$   
 LINEAR  
 X =  $\pm .1$   
 XX =  $\pm .03$   
 XXX =  $\pm .010$   
 FRACTIONAL  $\pm 1/32$   
 BREAK ALL SHARP EDGES

DRAWN D DEAN  
 CHECK  
 ENGR *Sxiles*  
 WG B 302933  
 APPROVED

<b>WESTERN</b> GEAR CORPORATION		HEAVY MACHINERY DIVISION EVERETT, WASHINGTON	
<b>ADAPTER - TARGET</b>			
SIZE <b>B</b>	CODE IDENT NO. <b>16603</b>	<b>Z150.005B29Z</b>	REV
SCALE 1/2	WT. 2 LB	SHEET 1	OF 1