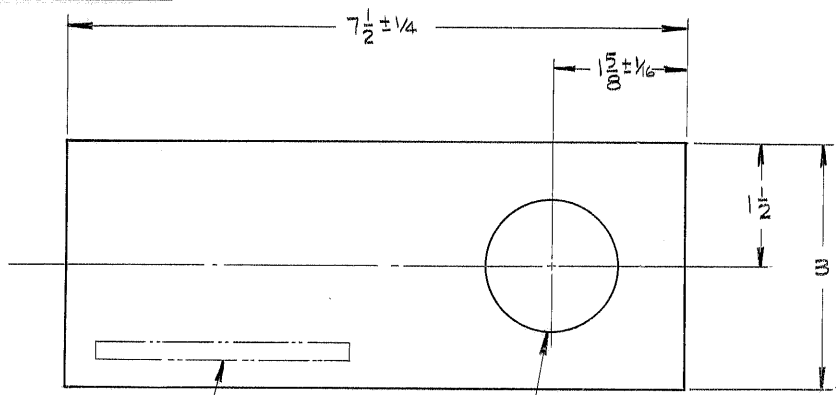


THIS DOCUMENT CONTAINS INFORMATION PROPRIETARY TO WESTERN GEAR CORPORATION. ALL DESIGN, MANUFACTURING, REPRODUCTION, USE, PATENT, AND SALES RIGHTS REGARDING THE SAME ARE HEREBY EXPRESSLY RESERVED BY WESTERN GEAR CORPORATION. THIS DOCUMENT IS SUBMITTED FOR REFERENCE PURPOSES ONLY AND SHALL NOT BE DISCLOSED TO ANY UNAUTHORIZED PERSON OR INCORPORATED INTO ANY OTHER PROJECT.

| REVISIONS | | | | |
|-----------|-----|-------------|------|----------|
| ZONE | LTR | DESCRIPTION | DATE | APPROVED |
| | | | | |



STEEL STAMP PART
NO. 2150.005B282

1 5/8 DIA THRU

- NOTES:
1. MATL - STL, ASTM A36 OR 1018/1020
1 x 3 x 7 1/2
 2. SANDBLAST TO CLEAN UP
 3. PAINT (1) COAT PRIME PAINT

REF. FILE 1152

LIMITS ON MACHINED DIMENSIONS EXCEPT AS NOTED
 ANGULAR ± 1° 0'
 LINEAR
 .X = ± .1
 .XX = ± .03
 .XXX = ± .010
 FRACTIONAL ± 1/32
 BREAK ALL SHARP EDGES

| | | | |
|------------------------------------|--------------|---|----------------|
| WESTERN GEAR CORPORATION | | HEAVY MACHINERY DIVISION EVERETT, WASHINGTON | |
| DRAWN <i>white</i> 7/23/71 | | RETAINER, HORSESHOE ASSY, SITE ERECTION | |
| CHECK | ENGR SKILES | SIZE | CODE IDENT NO. |
| WGB302936 | | B | 16603 |
| APPROVED | 2150.005B282 | REV | |
| SCALE | WT. | LB | SHEET OF |