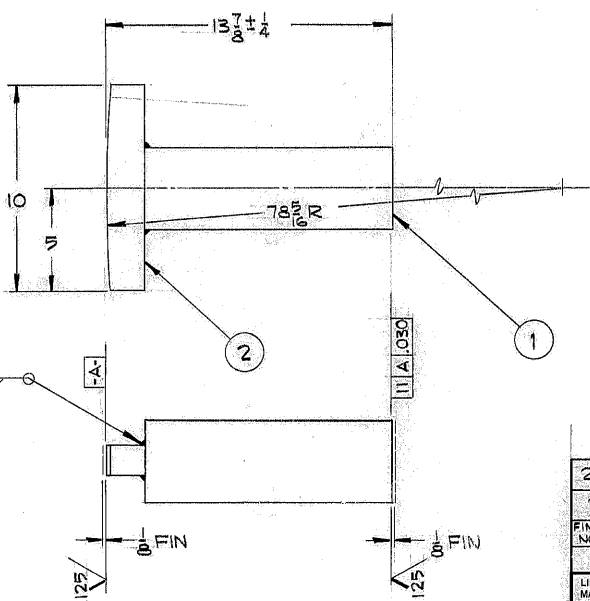


THIS DOCUMENT CONTAINS INFORMATION PROPRIETARY TO WESTERN GEAR CORPORATION. ALL DESIGN, MANUFACTURING, REPRODUCTION, USE, PATENT, AND SALES RIGHTS REGARDING THE SAME ARE HEREBY EXPRESSLY RESERVED BY WESTERN GEAR CORPORATION. THIS DOCUMENT IS SUBMITTED FOR REFERENCE PURPOSES ONLY AND SHALL NOT BE DISCLOSED TO ANY UNAUTHORIZED PERSON OR INCORPORATED INTO ANY OTHER PROJECT.

REVISIONS				
ZONE	LTR	DESCRIPTION	DATE	APPROVED



NOTE -
STEEL STAMP PART NO. 2150.005B219

AT EVERETT

2	R 1 1/2 x 2 x 10	1	STL-ASTM A36
1	BAR 4 DIA x 12 LG	1	STL-AISI 1018/1020
FIND NO.	DESCRIPTION	QTY	MATERIAL

LIST OF MATERIAL

LIMITS ON MACHINED DIMENSIONS EXCEPT AS NOTED ANGULAR ± 1° 0' LINEAR X = ± .1 XX = ± .03 XXX = ± .010 FRACTIONAL ± 1/32	DRAWN WHITE 2-25-71	WESTERN HEAVY MACHINERY DIVISION GEAR CORPORATION EVERETT, WASHINGTON	
	CHECK	RAM, PRIMARY MIRROR CLAMP	
	ENGR SKILES	BLOCK LOAD TEST FIXTURE	
	WGB 302648	SIZE B CODE IDENT NO. 16603	2150.005B219
BREAK ALL SHARP EDGES	APPROVED	SCALE 1/4	WT. 50 LB SHEET 1 OF 1

REF. FILE 1152