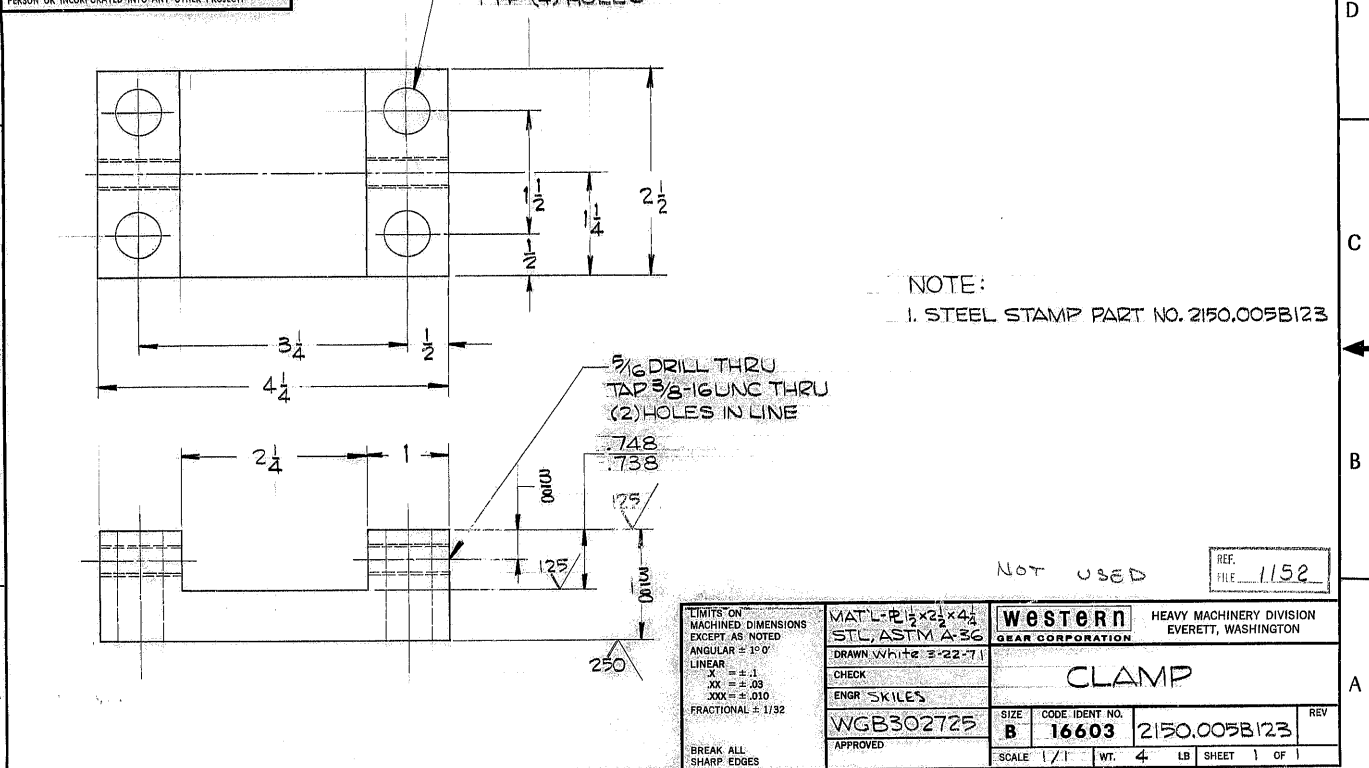


THIS DOCUMENT CONTAINS INFORMATION PROPRIETARY TO WESTERN GEAR CORPORATION. ALL DESIGN, MANUFACTURING, REPRODUCTION, USE, PATENT, AND SALES RIGHTS REGARDING THE SAME ARE HEREBY EXPRESSLY RESERVED BY WESTERN GEAR CORPORATION. THIS DOCUMENT IS SUBMITTED FOR REFERENCE PURPOSES ONLY AND SHALL NOT BE DISCLOSED TO ANY UNAUTHORIZED PERSON OR INCORPORATED INTO ANY OTHER PROJECT.



REVISIONS				
ZONE	LTR	DESCRIPTION	DATE	APPROVED

REF. FILE 1152

LIMITS ON MACHINED DIMENSIONS EXCEPT AS NOTED ANGULAR = 1° 0' LINEAR X = ± .1 XX = ± .03 XXX = ± .010 FRACTIONAL = 1/32 BREAK ALL SHARP EDGES	MAT'L - P 1 1/2 x 2 1/2 x 1/4 STL, ASTM A-36	WESTERN HEAVY MACHINERY DIVISION GEAR CORPORATION EVERETT, WASHINGTON
	DRAWN White E-22-71	CLAMP
	CHECK ENGR SKILES	
	WGB302725	SIZE CODE IDENT NO. REV B 16603 2150.005B123
APPROVED	SCALE 1/1 WT. 4 LB SHEET 1 OF 1	