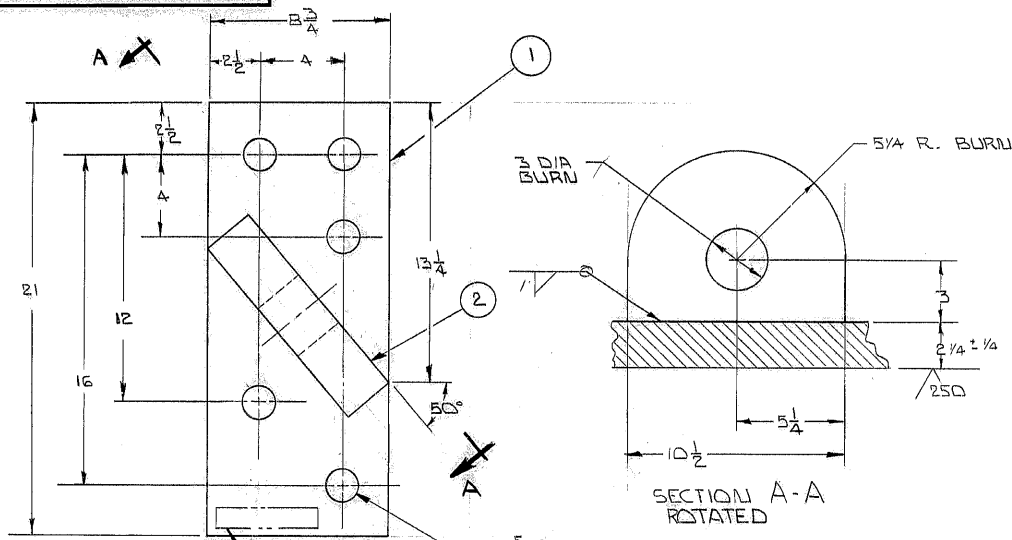


THIS DOCUMENT CONTAINS INFORMATION PROPRIETARY TO WESTERN GEAR CORPORATION. ALL DESIGN, MANUFACTURING, REPRODUCTION, USE, PATENT, AND SALES RIGHTS REGARDING THE SAME ARE HEREBY EXPRESSLY RESERVED BY WESTERN GEAR CORPORATION. THIS DOCUMENT IS SUBMITTED FOR REFERENCE PURPOSES ONLY AND SHALL NOT BE DISCLOSED TO ANY UNAUTHORIZED PERSON OR INCORPORATED INTO ANY OTHER PROJECT.

REVISIONS				
ZONE	LTR	DESCRIPTION	DATE	APPROVED



STL STAMP P/N
2150.005 B100

AT SITE

REF. FILE 1152

LIST OF MATERIAL

P/N	QTY	DESCRIPTION	MATERIAL
1	1	2 1/2 X 8 1/4 X 21	ASTM A-36
2	1	2 1/2 X 8 1/4 X 10 1/2	ASTM A-36

NEXT ASSY: 2150.005 E107

LIMITS ON MACHINED DIMENSIONS EXCEPT AS NOTED
 ANGULAR ± 1° 0'
 LINEAR
 X = ± .1
 XX = ± .03
 XXX = ± .010
 FRACTIONAL = 1/32
 BREAK ALL SHARP EDGES

DRAWN	SKILES
CHECK	
ENGR	
WGC 112626	
APPROVED	

WESTERN GEAR CORPORATION		HEAVY MACHINERY DIVISION EVERETT, WASHINGTON	
DRAWN		LIFTING LUG EAST END	
CHECK		LOW & R HORSE SHOE SECTION	
ENGR			
SIZE	CODE IDENT. NO.	REV	
B	16603	2150.005 B100	
SCALE 1/4"	WT.	LB	SHEET OF