

5

4

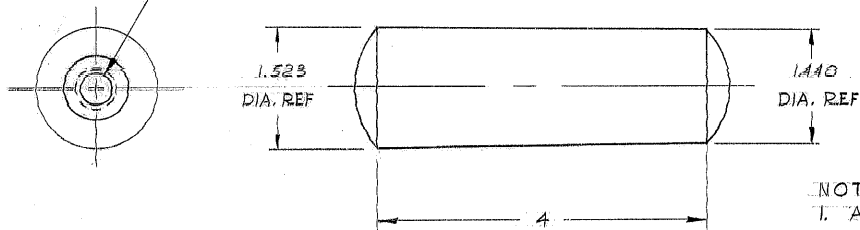
3

2

1

REVISIONS				
ZONE	LTR	DESCRIPTION	DATE	APPROVED
	A	REVISED PER AURA APPD CONST PRINT DATED 6 MAY 68	7 MAY 68	

$\frac{27}{64}$ DRILL $\times \frac{1}{8}$ DEEP MIN.
 $\frac{1}{2}$ -13 UNC-2B $\times 1$ " DEEP MIN.
 CBORE $\frac{3}{4}$ DIA $\times \frac{1}{4}$ DEEP



NOTES:

- ALL DIMENSIONS ARE IN INCHES.
- MATL: MAKE FROM STD. NO. 14 STL.
TAPER DOWEL PIN 4" LONG
- TAG PART NO. "2150.005B036"

REF.
FILE 1152

WESTERN GEAR CORPORATION
 CONSTRUCTION PROJECTS
 DEPARTMENT
 APPROVED FOR
 PROCUREMENT

J.R. DATE 8 MAY 68

NEXT ASSY: 2150.281E102 (W.G. N102 948)

LIMITS ON MACHINED DIMENSIONS EXCEPT AS NOTED ANGULAR = 1° 0'	150 th STELLAR TELESCOPE MTG		WESTERN GEAR CORPORATION		HEAVY MACHINERY DIVISION EVERETT, WASHINGTON	
	LINEAR X = ± .1 .XX = ± .03 .XXX = ± .010 FRACTIONAL = ± 1/32	DRAWN <i>Tom McGarvey</i>	CHECK <i>Steve Russo 4 MAR 68</i>		DOWEL, TAPER, NO. 14	
BREAK ALL SHARP EDGES	WGC 112375	SIZE B	CODE IDENT NO. 16603	2150.005B036	REV A	
	APPROVED	SCALE 1/1		WT.	LB	SHEET 1 OF 1