

5

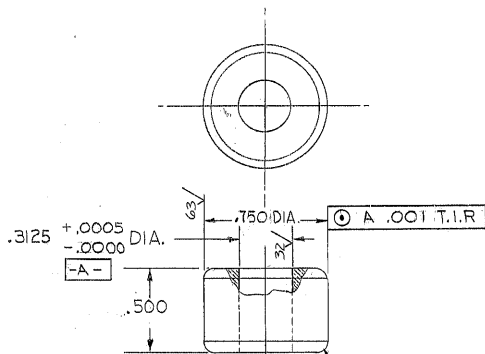
4

3

2

1

REVISIONS				
ZONE	LTR	DESCRIPTION	DATE	APPROVED
	A	REVISED PER AURA APPD CONST PRINT.	5-2-68	
	B	ADDED 2150.111E1QZ.	4-3-73	LDS

NOTES ¹²⁵/

1. FINISH ALL OVER, EXCEPT AS NOTED.
2. ALL DIMENSIONS ARE IN INCHES.
3. MAT'L: ROD BRONZE ASTM-B21, 1 DIA x 5/8.
4. TAG WITH PART NO. 2150.005B 011.

2150.111E1QZ
 2150.130E 202 W.G.N 102918
 2150.130E 102 W.G.N 102917
 2150.120E 102 W.G.N 102860
 2150.120E 202 W.G.N 102864
 2150.110E 102 W.G.N 102856
 2150.110E 202 W.G.N 102865

REF. FILE 1152

1/16 R. TYP

WESTERN GEAR CORPORATION
 CONSTRUCTION PROJECTS
 DEPARTMENT
 APPROVED FOR
 PROCUREMENT

J.R. DATE 5/7/68

NEXT ASSY

LIMITS ON
 MACHINED DIMENSIONS
 EXCEPT AS NOTED
 ANGULAR ± 1°
 LINEAR
 .X = ± .1
 .XX = ± .03
 .XXX = ± .010
 FRACTIONAL ± 1/32

BREAK ALL
 SHARP EDGES

150 INCH STELLAR
TELESCOPE MOUNTING

DRAWN L. JOHNSON 2-15-68
 CHECK *J. McCoy* 3/5/68
 ENGR

WGC 112332

APPROVED

Western
 GEAR CORPORATION

HEAVY MACHINERY DIVISION
 EVERETT, WASHINGTON

ROLLER SWITCH
 HYDROSTATIC BEARING

SIZE **B** CODE IDENT NO. 2150.005B 011 REV **B**

SCALE 2/1 WT. .1 LB SHEET 1 OF 1