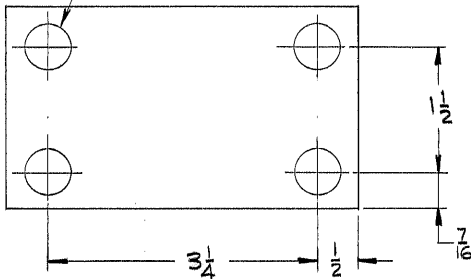


REVISIONS

ZONE	LTR	DESCRIPTION	DATE	APPROVED

9/16 DR. THRU  
(4) HOLES



NOTES:

1. SURFACE GRIND TO CLEAN UP - ONE SIDE ONLY
2. STEEL STAMP PART NO. 2150.005A122

1152

LIMITS OF  
MACHINED DIMENSIONS  
EXCEPT AS NOTED

ANGULAR ± 1° 0'

LINEAR

.X = ± .1

.XX = ± .03

.XXX = ± .010

FRACTIONAL ± 1/32

MATL -  $2\frac{1}{2} \times 2\frac{7}{8} \times 4\frac{1}{4}$   
STL - ASTM A-36

DRAWN WHITE 8-22-71

CHECK

ENGR SKILES

WG A301166

APPROVED

**WESTERN**  
GEAR CORPORATION

HEAVY MACHINERY DIVISION  
EVERETT, WASHINGTON

CAP

SIZE	CODE IDENT NO.	REV
A	16603 2150.005A122	
SCALE 1/1	WT.	LB SHEET 1 OF 1

A301166