

REVISIONS

ZONE	LTR	DESCRIPTION	DATE	APPROVED
A		ADDED STL STAMP P/N	1-20-70	

5-18UNC
1/6
TAPPED HOLE
FOR TOOL
REMOVAL.
SEE DETAIL
OF TOOL
BELOW.

HORSESHOE

D.A. AXLE
2150.280E010

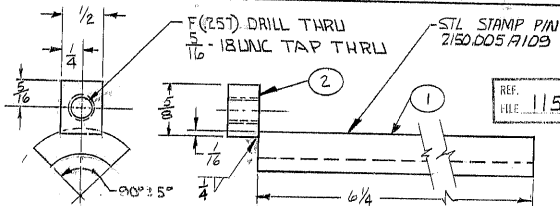
SHIM AS REQUIRED
TO KEEP WEDGE FROM
AXLE.

STUD - 2150.004 B012 - C11Z710
1/4-TUNG

WEDGE
2150.004C 009
D107 625

JAM OR
HEX NUT

WEDGE INSTALLATION



P-N	QTY	DESCRIPTION	MATERIAL
1	1	1/2 x 3/8 x 2/8	ASTM A-36
1	1	1 1/2 O.D x 1/16 WALL x 6 1/4	COLD DRAW SEAMLESS TUBING, 1010-1070

LIMITS ON
MACHINED DIMENSIONS
EXCEPT AS NOTED

ANGULAR ± 1°0'

LINEAR

.X ± .1

.XX ± .03

.XXX ± .010

FRACTIONAL ± 1/32

BREAK ALL
SHARP EDGES

DRAWN SKILES.

CHECK

ENGR SKILES.

A300909

APPROVED

WESTERN
GEAR CORPORATION

HEAVY MACHINERY DIVISION
EVERETT, WASHINGTON

WEDGE INSTALLATION TOOL
HORSESHOE TO CENTER SECTION

SIZE	CODE IDENT NO.		REV
A	16603	2150.005 A109	A

SCALE WT. LB SHEET 1 OF 1