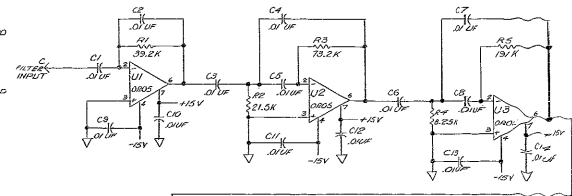
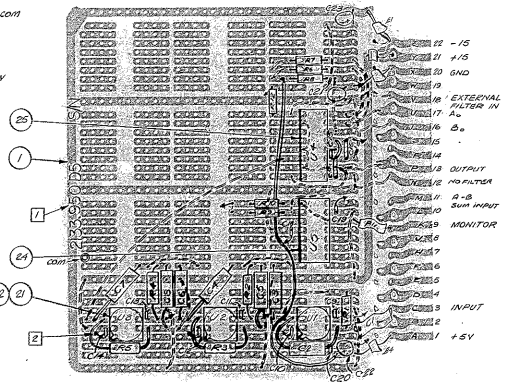
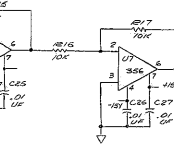
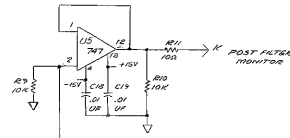
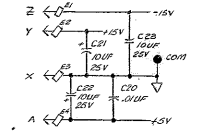


NOTES: UNLESS OTHERWISE NOTED

1. LASTY NO. & SERIAL NO. TO BE MARKED IN INK WITH LETTERS IN BLACK INK APPROX POSITION AS SHOWN.
2. \square SYMBOL INDICATES SOLDERED CONNECTION TO GROUND PLANE (NOT SHOWN) ON COMPONENT SIDE.
3. WIRE NO. 18 AWG AND SOLID SHIELDED WIRE
4. CAPACITORS $\geq 1 \mu F$ $\pm 10\%$
 $\geq 1 \mu F$ $\pm 10\%$



"NO FILTERS" (OUTER BY PASS) INPUT
A-B SUM INPUT



REVISIONS					
ZONE	LT#	DESCRIPTION	ED#	DATE	BY
A	1	R12 ADDED		7-27-73	PLS
B	1	OK, 7 ADDED		8-2-73	PLS

1	1N62-15V100	SOCKET 15 PIN DIP	SCABLE	25
1	C03400R	SOCKET 18 PIN DIP	TEXAS IN	24
4		FERRITE BEAD		23
5	7717-245	1/2 CONVERSION PAD	THERMALDY	22
3	C930B02	SOCKET	TEXAS IN	21
1	1N5500	RESISTOR 10K, 1/2 METAL FILM	R12	20
		10K, 1/2W	R11	19
2		10K, 1/2W	R3,10,13-15	18
3		2.2K, 1/2W	R1,1,9	17
1	1N5500	RESISTOR 10K, 1/2 METAL FILM	R4	16
1		21.5K	R2	15
1		30.2K	R1	14
1		73.2K	A,3	13
1	1N5500	RESISTOR 10K, 1/2 METAL FILM	R5	12
1		RESISTOR 7K	R10	11
1		CAPACITOR 30PF	C15	10
2		CAPACITOR 1UF	C16,17	9
3		CAPACITOR 10UF	C1,14,18,20	8
3	AT740H	CAPACITOR 10UF 1/2 50V GATED	C1-3	7
1		CAPACITOR 10UF 50V	C2,21,22,23	6
1	5V 72M7H	OPERATIONAL AMP	U5	5
1	1N2405-5	PRISM OPERATIONAL AMP	MONITOR	4
3	5V 72M7H	OPERATIONAL AMP	U1,2,3	3
2	1N2405-5	OPERATIONAL AMP	U4,7	2
1	1N02-3GP	CIRCUIT BOARD	000443	1

KEY	OR	PART OR IDENTIFYING NO.	DESCRIPTION	MATERIAL SPECIFICATION	REF DES	ITEM NO.
PARTS LIST						
TOLERANCES UNLESS OTHERWISE NOTED						
DECIMALS FRACTIONS						
XXX & .03 5--						
XXX & .025 ANGULAR 1/2°						
NEXT ASSEMBLY						
2/33-950 D/1E						
4 M TELESCOPE - FT'S						
KITTEK NATIONAL OBSERVATORY						
ASSOCIATION OF UNIVERSITIES FOR RESEARCH IN ASTRONOMY, INC.						
NATIONAL SCIENCE FOUNDATION						
FORM NO. 100-100-01 (REV. 1-65)						
SCALE 2:1						
PRINTED IN U.S.A.						

COMPONENT CARD ASSY		REV 1/50 4231	
2/33-950 D/1E	400 Hz HIGH PASS FILTERS	2/33-950 D/5	REV B
SPDLE MFM (BUTTERWORTH)			
SCALE 2:1	DESIGNED BY	CHECKED BY	DATE
PRINTED IN U.S.A.	DATE	DATE	DATE
	REVISED BY	DATE	REASON