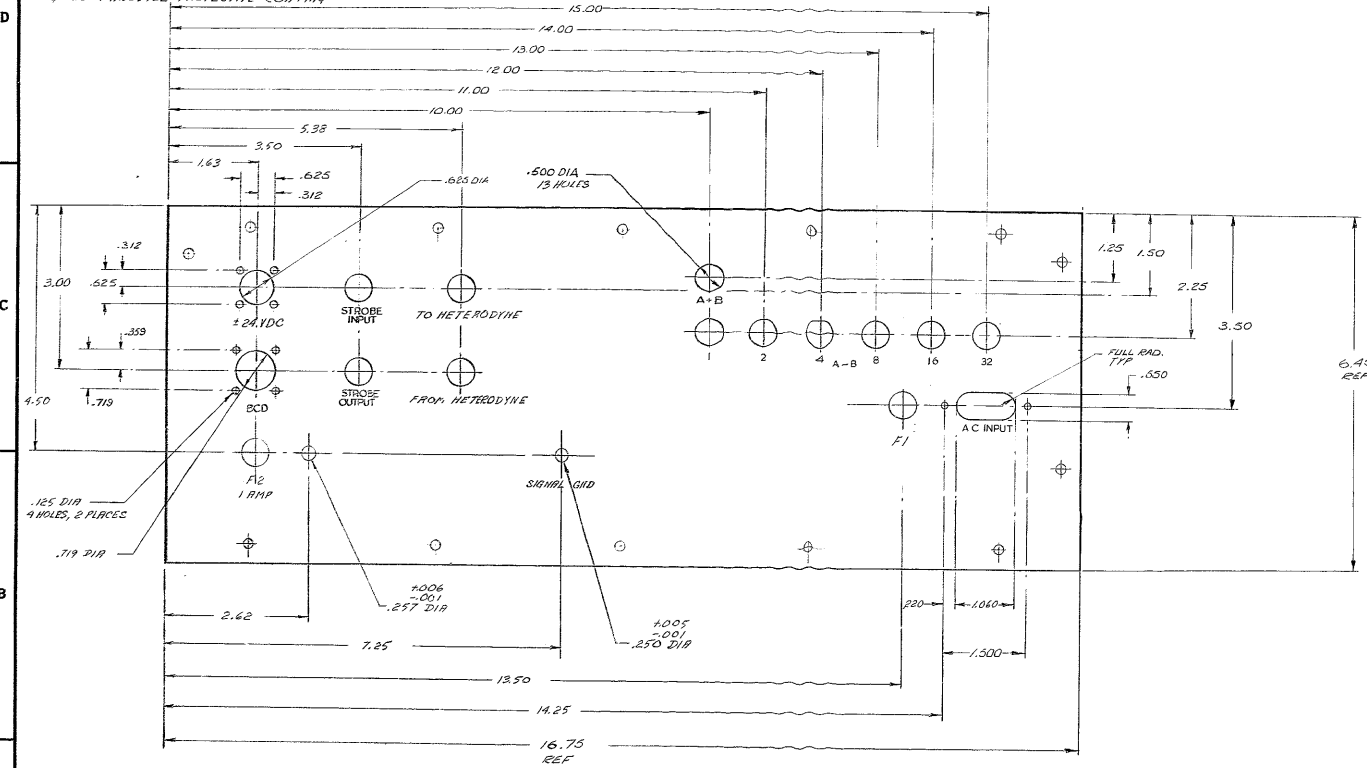


**NOTES: UNLESS OTHERWISE NOTED**

1. REMOVE ALL BURRS AND SHARP EDGES <sup>-02</sup>
2. MACHINED SURFACE ROUGHNESS  $\sqrt{32}$
3. HATCH MARK FROM REAR PANEL OF STD 7" CHASSIS BCDI CODES
4. FINISH: PHOTO ETCH REAR PANEL USING 2133.920 D AS PHOTO MASTER. BLACK CHARACTERS & CLEAR PHOTOZIE PROTECTIVE COATING

REVISIONS					
ZONE	LYR	DESCRIPTION	ECR	DATE	BY / APD
A	1	2133.920 D AS PHOTO MASTER	1527	11-21-71	R
B	2	AS BUILT	1606	8-24-72	R



QTY REQD	PART OR IDENTIFYING NO.	DESCRIPTION	MATERIAL / SPECIFICATION	ZONE	ITEM NO.
<b>PARTS LIST</b>					
TOLERANCES UNLESS OTHERWISE NOTED		4" TELESCOPE - F.T.S.			
DECIMALS	FRACTIONS	<b>KITT PEAK NATIONAL OBSERVATORY</b> <small>OPERATED BY THE ASSOCIATION OF UNIVERSITIES FOR RESEARCH IN ASTRONOMY, INC.</small> <small>UNDER CONTRACT WITH NATIONAL SCIENCE FOUNDATION</small>			
.XX = .02	—				
.XXX = .010	ANGULAR ± 0' 30"				
NEXT ASSEMBLY 2133.920 D-2		NAME REAR PANEL - ANALOG PROCESSOR CHASSIS, 10 CM F.T.S.		REF. FILE H-13, 4321	
SCALE FULL PRINT ISSUED		DESIGNED BY DATE	APPROVED BY DATE	DWG. NO. 2133.920 D5	REV. -
		DRAWN BY DATE	CHECKED BY DATE	ISSUED BY DATE	REV. -
		ETCHED BY DATE	APPROVED BY DATE	DATE AUG 2 6 1972	