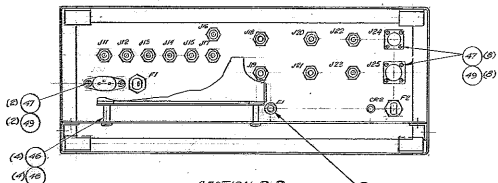
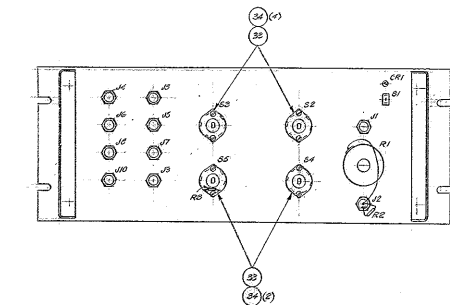


NOTES: UNLESS OTHERWISE NOTED

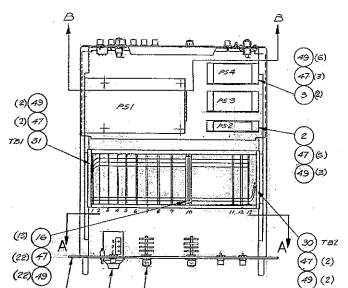
1. REMOVE ALL BURRS AND SHARP EDGES
 2. MACHINED SURFACE ROUGHNESS $\sqrt{16}$
 3. FOR WIRING DIAGRAM SEE 2133-920 D1
 4. FOR BLOCK DIAGRAM SEE 2133-920 D1
- ITEMS NOT SHOWN.



SECTION B-B
SCALE 1/2



SECTION A-A
ROTATED 100°
SCALE 1/2



REVISIONS

ZONE	LTN	DESCRIPTION	CR	DATE	BY	CHK
A	1	ITEM 412 IS REVISED ITEM 2 IS REVISED REVISIONS		2/16	F-117	AW
B	1	UNQUOTE QUOTES		2/28	R-9-B	DS
C	1	UNQUOTE ITEM IS QUOTE		3/10	R-10-B	AW

1	2133-920 A17	COMPONENT CARD ASSY	80M BIT/MIN INFL PAPER	A12	53
1	2133-920 A18	1	80M BIT/MIN LOW PRESSURE PAPER	A11	52
1	2133-920 A15	COMPONENT CARD ASSY	40M BIT/MIN LOW PRESSURE PAPER	A10	51
1	2133-920 A12	COMPONENT CARD ASSY	MAGNITUDE EXPAND TEST	A1M	50
1	49	1/4" CAPTIVE WASHERS	4-40 X.557		49
1	4	SCREEN	NO. 70 7/8 X.28 X.1/8 IN. SFT		48
1	4	SCREEN	NO. 100 7/8 X.20 X.3/16 IN. SFT		47
1	4	SPACER	1/8 X.75 IN. SFT		46
1	140	STANDOFF	4-40 X.75 IN. SFT		45
1	4	357-101	CABLE TIE	ANY CUT	44
1	1	4865-1	4-CONDUCTOR BUNDLE	ANY CUT	43
1	140	3506	CABLE CLAMP 1/8 ID 7/8 WIDE NEVMAN (CR)		42
1	140	3504	CABLE CLAMP 1/8 ID 7/8 WIDE NEVMAN (CR)		41
1	140	D1-140	D1 WASHER	NEVMAN	40
1	140	D1-140	D1 WASHER	NEVMAN	39
1	1	DE-31	BINDING ASST	SUPERIOR	37
2	4	3002-1803	LIGHT SHUTTING DIODE	ARGENT	CR1-37
1	1	728	CIRCUITRY SHAL	SECORHAM	36
4	4	10-3-2	ANODE	RAYTHEON	35
1	1	140	LEAFS	CENTRONAL	34-35
4	4	7304	SWITCH KIT - 4-6 SECT 40*INDIC	GLOBE	33
1	1	375-1	SWITCH	AMERICAN SW	32
1	1	325-13-03 053	TERMINAL STRIP	CINCH JONES	T01-31
1	1	325-13-03 053	TERMINAL STRIP	CINCH JONES	T02-30
1	1	11V 3533	LIGHT SHUTTING DIODE	MORGENTHAU	CR1-29
1	1	RESISTOR	2K 1/4W		28
1	1	RESISTOR	10K 1/4W		27
1	1	2201-8	POTENTIOMETER 25K 1/4W	AMPHENOL	A1-26
2	2	310-002	POWER SUPPLY 25W	LITTLEFUSE	A1-25
2	2	310-004	POWER SUPPLY 25W	LITTLEFUSE	A1-24
2	2	KC 79-67	CONNECTOR - JACK	MINI-J	JN-23
1	1	AC-30	CONNECTOR AC SUPPLY	SMITHCORNET	J1-22
1	1	330-7-020	CONNECTOR	SMITHCORNET	J1-21
1	1	100-3-020V	CONNECTOR	SMITHCORNET	J1-20
2	2	L10-3E	POWER SUPPLY - 5KV	VEECO	P3L-19
1	1	L10-10	POWER SUPPLY - 5KV	VEECO	P3R-18
1	1	L10-01 052	POWER SUPPLY - 25W	VEECO	P3T-17
1	1	3044A - 30	SOCKET - CARD	CINCH	A1-16
1	1	2133-920 B13	COMPONENT CARD ASSY	80M BIT/MIN INFL PAPER	A17-15
1	1	2133-920 B12	COMPONENT CARD ASSY	80M BIT/MIN INFL PAPER	A16-14
1	1	2133-920 B11	COMPONENT CARD ASSY	80M BIT/MIN INFL PAPER	A15-13
1	1	2133-920 B10	COMPONENT CARD ASSY	80M BIT/MIN INFL PAPER	A14-12
1	1	2133-920 B9	COMPONENT CARD ASSY	80M BIT/MIN INFL PAPER	A13-11
1	1	1	80M BIT/MIN INFL PAPER		A8-10
1	1	1	80M BIT/MIN INFL PAPER		A7-9
1	1	1	80M BIT/MIN INFL PAPER		A6-8
1	1	1	80M BIT/MIN INFL PAPER		A5-7
1	1	1	80M BIT/MIN INFL PAPER		A4-6
2	2	1	80M BIT/MIN INFL PAPER		A3-5
1	1	2133-920 D1	COMPONENT CARD ASSY - (A1-B) (A-B) FORMATION		A1-4
2	2	2133-920 C1-1	BRACKET		3
1	1	2133-920 C1-1	BRACKET		2
1	1	2133-920 D2	CHASSIS ASSY		1

PARTS LIST

QTY	PART OR IDENTIFYING NO.	DESCRIPTION	MATERIAL/SPECIFICATION	REF DESG	ITEM NO.
<p>TOLERANCES UNLESS OTHERWISE NOTED DECIMALS FRACTIONS .XX ± .03 . — . — .XXX ± .01 ANGULAR . ± .05</p>					
<p>NEXT ASSEMBLY: 2133-920 E1</p>					
<p>SCALE: 1/4" = 1" NOTED</p>					
<p>APPROVED BY: DATE: 2/28/51</p>					
<p>DESIGNED BY: DATE: 2/13/51</p>					
<p>CHECKED BY: DATE: 2/13/51</p>					
<p>PREPARED BY: DATE: 2/13/51</p>					
<p>SCALE: 1/4" = 1" NOTED</p>					

4M TELESCOPE - F.T.S. 1M

KITT PEAK NATIONAL OBSERVATORY

ASSOCIATION OF UNIVERSITY FOR RESEARCH IN ASTRONOMY, INC.
 OPERATED BY THE
 NATIONAL SCIENCE FOUNDATION

DATE: 2/13/51

MODULE A55Y-ANALOG PROCESSOR, F.T.S. - 1M

FOR SCHEMATIC - INTERCONNECTION DIAGRAMS - 1 SEE 2133-910 D1
 - 2 SEE 2133-910 D5
 FOR BLOCK DIAGRAM = 2133-900 D12