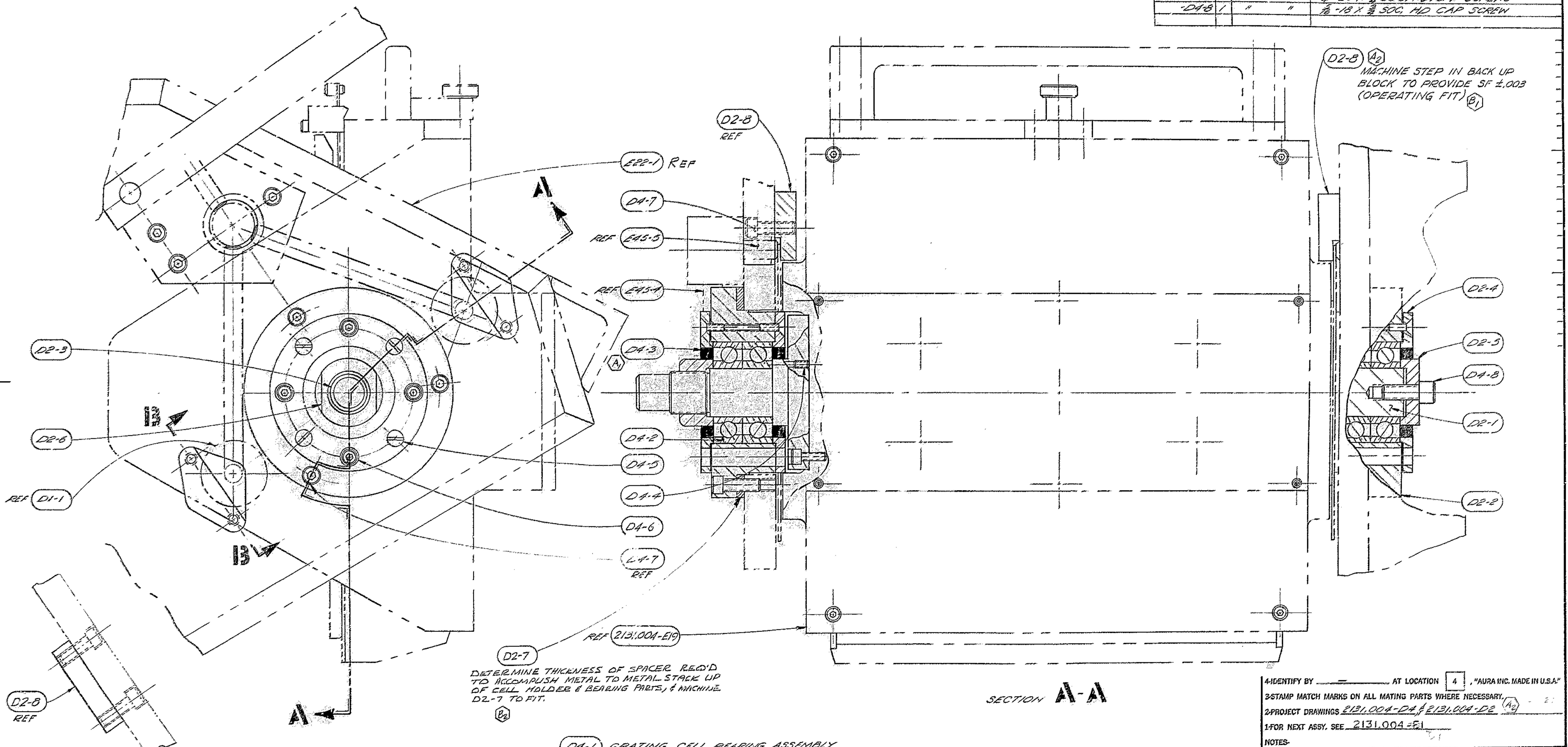


BILL OF MATERIAL

ITEM	QTY.	MATERIAL	DESCRIPTION	WEIGHT
2131.004-D4-1	1		GRATING CELL BEARING ASSEMBLY	
D4-2	2		BALL BEARING SET - PAFNIR #BMMBROS11-	
			CR-F5-130-DB	
D4-3	4		SEAL - CHICAGO RAWHIDE # 13536	
D4-4	6	STAINLESS STEEL	#6-32 X 1/2 SOG. SET SCREWS	
D4-5	16	"	#8-32 X 1/2 FLAT HD. MACHINE SCREWS	
D4-6	8	"	10-24 X 1/2 SOG. HD. CAP SCREWS	
D4-7	14	"	1/2-20 X 3/4 SOG. HD. CAP SCREWS	
D4-8	1	"	1/8-18 X 3/4 SOG. HD. CAP SCREW	



D2-8 A2  
MACHINE STEP IN BACK UP BLOCK TO PROVIDE SF 2.003 (OPERATING FIT) B1

D2-7  
DETERMINE THICKNESS OF SPACER REQ'D TO ACCOMPLISH METAL TO METAL STACK UP OF CELL HOLDER & BEARING PARTS, & MACHINE D2-7 TO FIT.

D4-1 GRATING CELL BEARING ASSEMBLY 1 REQD

SECTION B-B  
SHOWING MOUNTING OF D2-9  
VIEW FROM EAST

SECTION A-A

4-IDENTIFY BY \_\_\_\_\_ AT LOCATION 4, "AURA INC. MADE IN U.S.A."  
 3-STAMP MATCH MARKS ON ALL MATING PARTS WHERE NECESSARY.  
 2-PROJECT DRAWINGS 2131.004-D4 & 2131.004-D2  
 1-FOR NEXT ASSY. SEE 2131.004-E1  
 NOTES-

**KITT PEAK NATIONAL OBSERVATORY**  
 OPERATED BY THE ASSOCIATION OF UNIVERSITIES FOR RESEARCH IN ASTRONOMY, INC.  
 UNDER CONTRACT WITH NATIONAL SCIENCE FOUNDATION

150" TELESCOPE REF. FILE 1310  
 CASSEGRAIN SPECTROGRAPH SCALE 1/1  
 GRATING CELL BEARING ASSEMBLY PRINT ISSUED

DESIGNED BY	DATE	APPROVED BY	DATE	DRAWING NUMBER	REV.
A1	11/1/71	A1	11/1/71	2131.004-D4	C
DRAWN BY	DATE	APPROVED BY	DATE		
S. R. CRAWFORD	11/1/71	A1	11/1/71		
CHECKED BY	DATE	APPROVED BY	DATE		
R. C. GARDNER	11/1/71	A1	11/1/71		

LET.	REVISION	ECR.	DATE	BY
C	REDESIGNED (SEE MICROFILM 'B' REV FOR PREVIOUS DESIGN)		0897 10/11/72	PRD
B	(1)ADD NOTE (2)ADD NOTE		0263 9-4-72	PRD
A1	SEAL WAS #181G11A		0781 2-16-72	ECR
A2	ITEM D2-8 WAS E22-6			