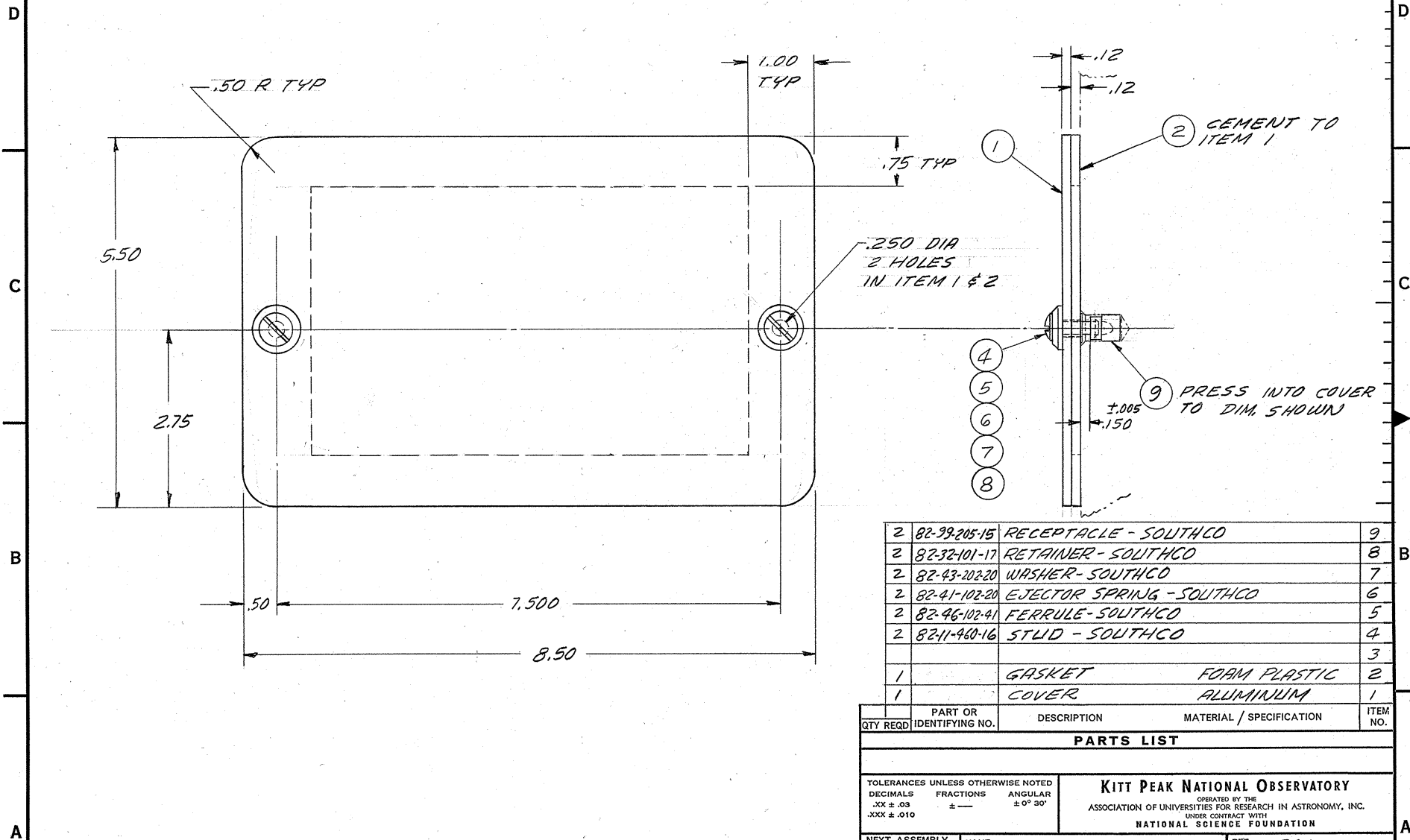


- NOTES: UNLESS OTHERWISE NOTED**
1. REMOVE ALL BURRS AND SHARP EDGES $.02$ R MAX
 2. MACHINED SURFACE ROUGHNESS $\sqrt{125}$

REVISIONS						
ZONE	LTR	DESCRIPTION	ECR	DATE	BY	APVD
IC	A	REMOVED $.372$ DIA \times $.59$ DEEP 2 HOLES IN COVER 2131.003-E17	1753	11-16-76	D.L.B.	718



2	82-39-205-15	RECEPTACLE - SOUTHCO	9	
2	82-32-101-17	RETAINER - SOUTHCO	8	
2	82-43-202-20	WASHER - SOUTHCO	7	
2	82-41-102-20	EJECTOR SPRING - SOUTHCO	6	
2	82-46-102-41	FERRULE - SOUTHCO	5	
2	82-11-460-16	STUD - SOUTHCO	4	
			3	
1		GASKET	FOAM PLASTIC	2
1		COVER	ALUMINUM	1

QTY REQD	PART OR IDENTIFYING NO.	DESCRIPTION	MATERIAL / SPECIFICATION	ITEM NO.
----------	-------------------------	-------------	--------------------------	----------

PARTS LIST

TOLERANCES UNLESS OTHERWISE NOTED
 DECIMALS FRACTIONS ANGULAR
 .XX ± .03 ± ± 0° 30'
 .XXX ± .010 ± ±

KITT PEAK NATIONAL OBSERVATORY
 OPERATED BY THE
 ASSOCIATION OF UNIVERSITIES FOR RESEARCH IN ASTRONOMY, INC.
 UNDER CONTRACT WITH
 NATIONAL SCIENCE FOUNDATION

NEXT ASSEMBLY 2131.003-E12	NAME COVER PLATE 150" CASS GUIDER	REF FILE 1301
SCALE FULL	DESIGNED BY L.C.	DATE 4-9-74
PRINT ISSUED	DRAWN BY L.C.	DATE 8-2-74
CHECKED BY	APPROVED BY	DATE
	DWG NO. 2131.003-C3	REV A
	RELEASE DATE 4-18-74	