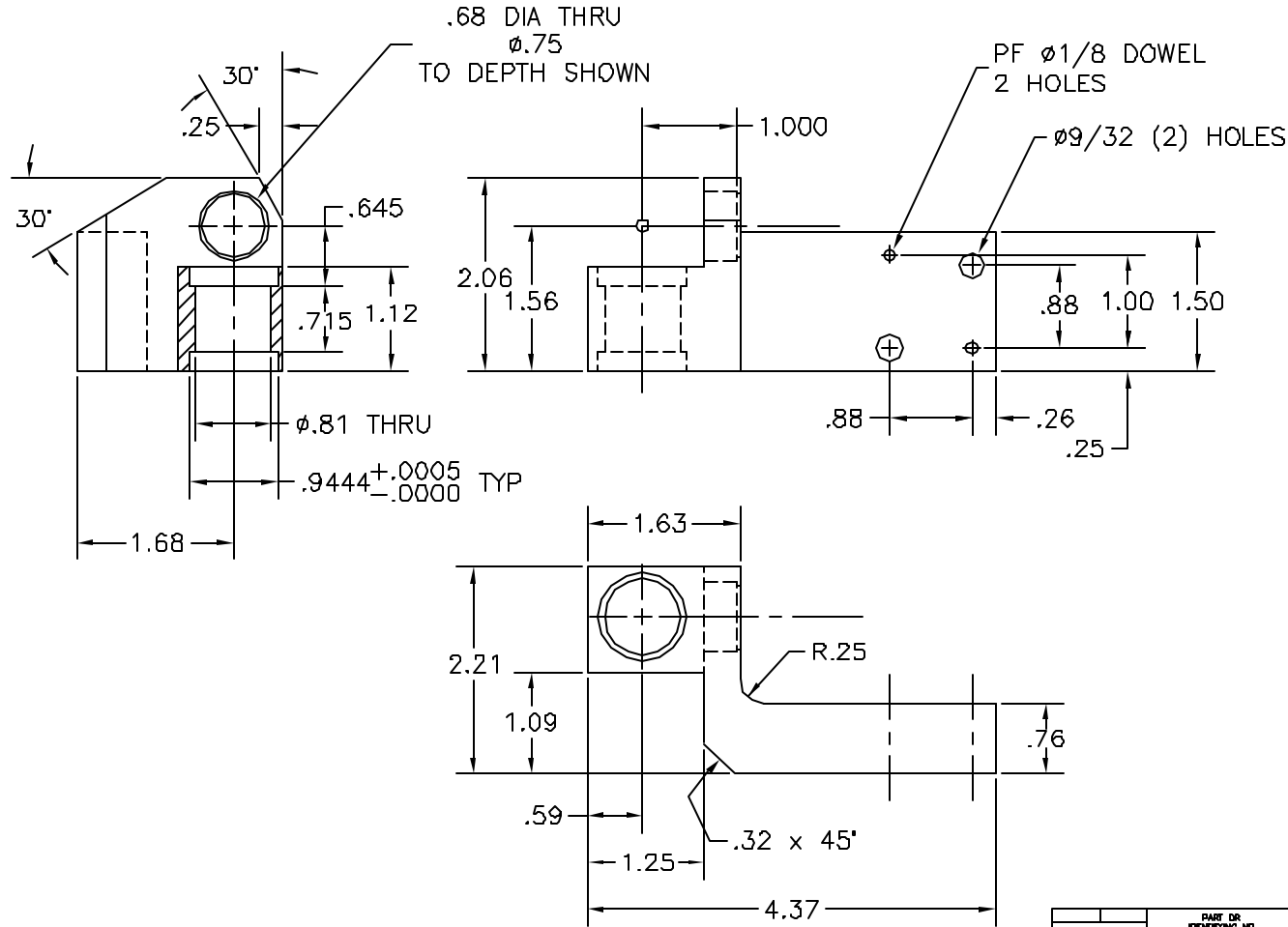


NOTES: UNLESS OTHERWISE SPECIFIED

1. REMOVE ALL BURRS AND SHARP EDGES $\pm .015$
2. MACHINED SURFACE ROUGHNESS 125 ✓
3. MAT'L: ALUMINUM ALLOY 6061-T6
4. FINISH: BLACK ANODIZE

REVISIONS					
ZONE	LTR	DESCRIPTION	ECR	DATE	BY / APPR



QTY REQD	PART OR IDENTIFYING NO	DESCRIPTION	MATERIAL/SPECIFICATION	ZONE	ITEM NO
TOLERANCES UNLESS OTHERWISE NOTED DECIMALS .XX ± .03 FRACTIONS .XXX ± .010 ± - ANGULAR ± 0°30' .XXX ± .010 ± - .XXX ± .0005		NATIONAL OPTICAL ASTRONOMY OBSERVATORIES OPERATED BY THE ASSOCIATION OF UNIVERSITIES FOR RESEARCH IN ASTRONOMY UNDER COOPERATIVE AGREEMENT WITH NATIONAL SCIENCE FOUNDATION			
NEXT ASSEMBLY 2131.003E9		NAME WAVEFRONT CAMERA- MITER GEAR BLOCK "X" SCREW		REF FILE 1301	
SCALE FULL		DESIGNED BY J.HOEY 5/4/01		DATE 5/4/01	
DRAWING PRODUCED USING AUTOCAD v.14		DRAWN BY J.HOEY 5/4/01		DATE 5/4/01	
FRONT VIEWED		CHECKED BY		DATE	
2131.003C15				SHEET OF	