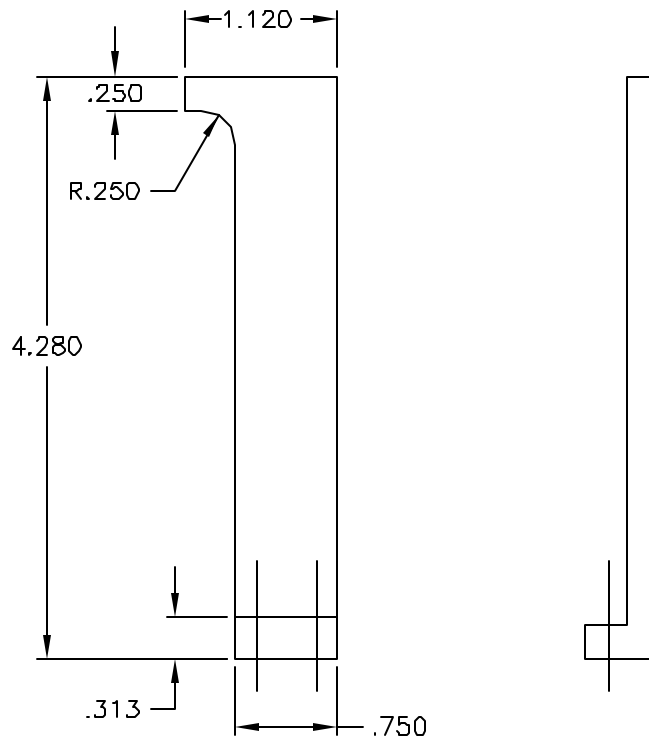
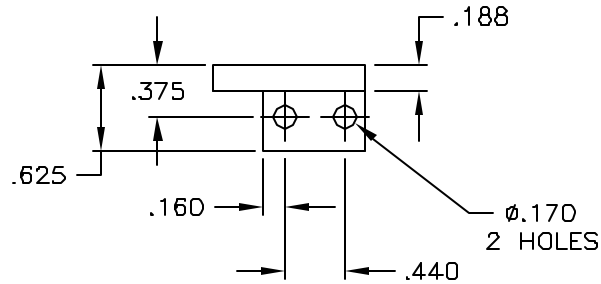


- NOTES: UNLESS OTHERWISE SPECIFIED
 1. REMOVE ALL BURRS AND SHARP EDGES
 2. MAT'L: ALUMINUM ALLOY 6061-T6
 3. FINISH: BLACK ANODIZE

REVISIONS					
LTR	DESCRIPTION	ECR	DATE	BY	APRV



TOLERANCES UNLESS OTHERWISE NOTED DECIMALS FRACTIONS ANGULAR .XX ± .03 ± - ± 0°30' .XXX ± .010			NATIONAL OPTICAL ASTRONOMY OBSERVATORIES OPERATED BY THE ASSOCIATION OF UNIVERSITIES FOR RESEARCH IN ASTRONOMY UNDER COOPERATIVE AGREEMENT WITH NATIONAL SCIENCE FOUNDATION		
NEXT ASSEMBLY 2131.D03E5		NAME WAVEFRONT CAMERA— LIMIT SWITCH ACTUATOR		REF FILE 1301	
				USED ON	
SCALE FULL	DESIGNED BY J.HOEY	DATE 02/06/01	APPROVED BY	DATE	DWG NO 2131.003B19
DRAWING PRODUCED USING AUTOCAD v.14	CHECKED BY	DATE	APPROVED BY	DATE	REV
ISSUED				RELEASED	SHEET OF