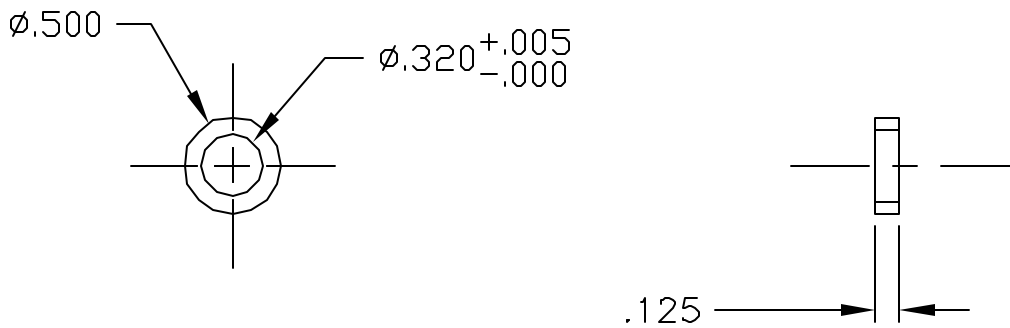


NOTES: UNLESS OTHERWISE SPECIFIED

1. REMOVE ALL BURRS AND SHARP EDGES .010 R MAX
2. MACHINED SURFACE ROUGHNESS 125 ✓
3. MAT'L: COLD ROLLED STEEL
4. FINISH:

REVISIONS

| LTR | DESCRIPTION | ECR | DATE | BY | APRV |
|-----|-------------|-----|------|----|------|
|-----|-------------|-----|------|----|------|



TOLERANCES UNLESS OTHERWISE NOTED  
 DECIMALS FRACTIONS ANGULAR  
 $.XX \pm .03 \quad \pm - \quad \pm 0'30''$   
 $.XXX \pm .010$

NATIONAL OPTICAL ASTRONOMY OBSERVATORIES  
 OPERATED BY THE  
 ASSOCIATION OF UNIVERSITIES FOR RESEARCH IN ASTRONOMY  
 UNDER COOPERATIVE AGREEMENT WITH  
 NATIONAL SCIENCE FOUNDATION

|  |   |                  |             |      |                       |          |
|--|---|------------------|-------------|------|-----------------------|----------|
| NEXT ASSEMBLY<br>2131.003E5            | NAME<br>WAVEFRONT CAMERA—<br>BEARING SPACER,<br>"X" DRIVE | REF FILE<br>1301 |             |      |                       |          |
|  |   | USED ON          |             |      |                       |          |
| SCALE<br>FULL                          | DESIGNED BY   | DATE             | APPROVED BY | DATE | DWG NO<br>2131.003A23 | REV      |
| DRAWING PRODUCED USING<br>AUTOCAD v.14 | DRAWN BY<br>J.HOEY  | DATE<br>04/20/01 | APPROVED BY | DATE |                       |          |
| ISSUED                                 | CHECKED BY  | DATE             | APPROVED BY | DATE | RELEASED              | SHEET OF |