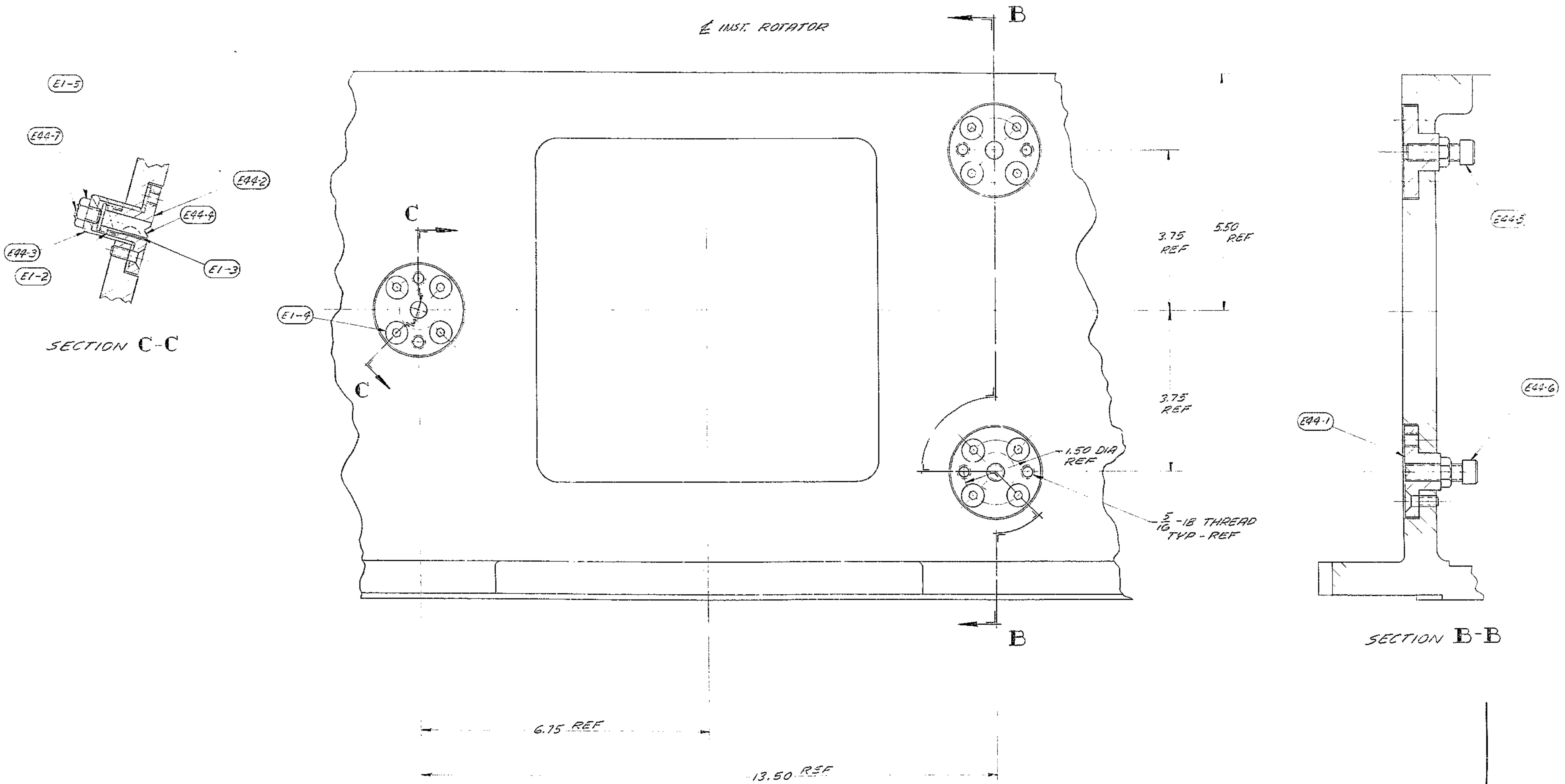


BILL OF MATERIAL

ITEM	QTY	MATERIAL	DESCRIPTION	WEIGHT
E1-1	1		CASSEGRAIN INST. ROTATOR	
E1-2	1	MUSIC WIRE	SPRING TO SUIT - APPROX. 5 LBS. PRESS.	
E1-3	1	STEEL	1/2 DIA X 3/32 WOODRUFF KEY # 304	
E1-4	12	STEEL	1/4 - 20 X 3/4 FLAT HD SOC SCR.	
E1-5	3	CRES	3/8 - 24 HEX JAM NUT	



VIEW A-A
2139-D1-2 REMOVED FOR CLARITY

- 5-BREAK SHARP EDGES ...
- 4-IDENTIFY BY _____ AT LOCATION "MADE IN U.S.A."
- 3-STAMP MATCH MARKS ON ALL MATING PARTS WHERE NECESSARY.
- 2-PROJECT DRAWINGS _____
- 1-FOR NEXT ASSY. SEE 2139-D1-2001

<p>TOLERANCES UNLESS OTHERWISE NOTED:</p> <p>DECIMAL DIMENSIONS .000 & .010 .0000 & .0005</p> <p>FRACTIONAL DIMENSIONS UP TO 16' ± 1/64 16' TO 50' ± 1/32 50' & OVER ± 1/16</p> <p>ANGLES ± 30'</p> <p>ALL SURFACES TO HAVE _____ FINISH UNLESS OTHERWISE NOTED.</p>		<p>KITT PEAK NATIONAL OBSERVATORY OPERATED BY THE ASSOCIATION OF UNIVERSITIES FOR RESEARCH IN ASTRONOMY, INC. UNDER CONTRACT WITH NATIONAL SCIENCE FOUNDATION</p> <p>NAME: 150" TELESCOPE SET FILE: 1230</p> <p>SCALE: FULL PRINT ISSUED</p>
<p>FOR REVISION SEE SHEET 1</p>	<p>DESIGNED BY: WJ DATE: 1-27-71 APPROVED BY: WJ DATE: 2-7-71</p> <p>DRAWING NUMBER: 2131.002-E1</p> <p>REV. B</p>	<p>DATE: 1-27-71 APPROVED BY: WJ DATE: 2-7-71</p> <p>DATE: 1-27-71 APPROVED BY: WJ DATE: 2-7-71</p> <p>DATE: 1-27-71 APPROVED BY: WJ DATE: 2-7-71</p>