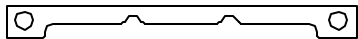
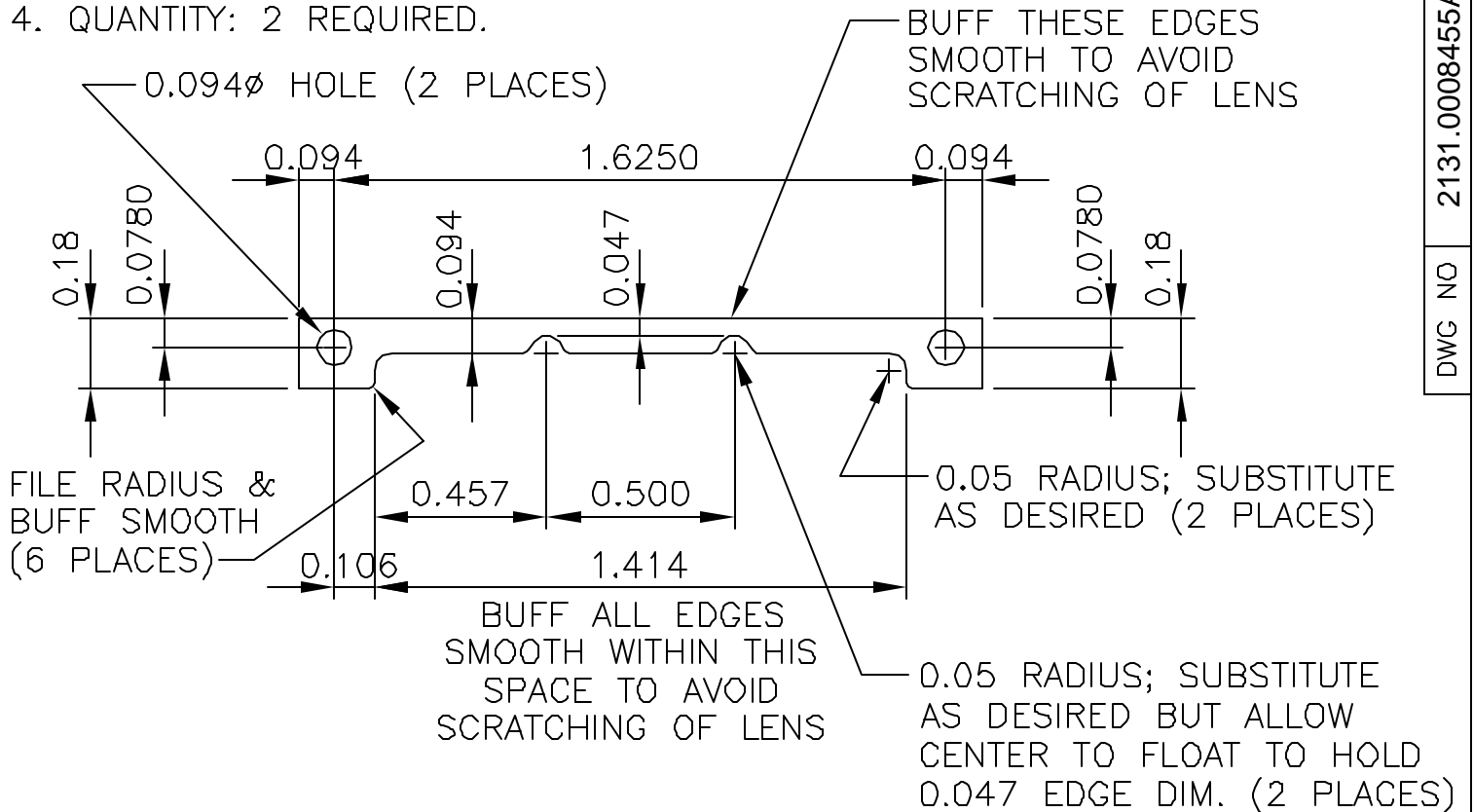


NOTES:

1. REMOVE ALL BURRS AND SHARP EDGES; RADIUS AS NOTED.
2. MACHINED SURFACE ROUGHNESS $\sqrt{32}$
3. MATERIAL: BERYLIUM COPPER, 0.01 THICK, HEAT TREAT TO 650° FOR 3 HOURS.
4. QUANTITY: 2 REQUIRED.

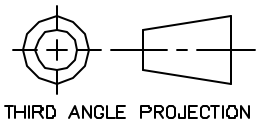
REVISIONS					
LTR	DESCRIPTION	ECR	DATE	BY	APRV



FULL SIZE SKETCH

DWG NO 2131.0008455A

TOLERANCES UNLESS OTHERWISE NOTED
 .XX \pm .03 ANGULAR \pm 1°
 .XXX \pm .015
 .XXXX \pm .0050



NATIONAL OPTICAL ASTRONOMY OBSERVATORIES
 OPERATED BY THE
ASSOCIATION OF UNIVERSITIES FOR RESEARCH IN ASTRONOMY
 UNDER COOPERATIVE AGREEMENT WITH
NATIONAL SCIENCE FOUNDATION

DO NOT SCALE DRAWING	NAME	USED ON	REF. FILE
NEXT ASSEMBLY 2131.0008404D	LENS RETAINING CLIP; DETECTOR MOUNT	CRYOCAM	1307
		DWG SIZE A	REV

SCALE: 2X FULL	DESIGNED BY RDB	DATE 7/20/01	CHECKED BY RDB	DATE 7/20/01	DWG NO 2131.0008455A
DWG PRODUCED USING AUTOCAD R14	DRAWN BY RDB	DATE 7/20/01	APPROVED BY	DATE	
	PRINT ISSUED	DATE	APPROVED BY	DATE	RELEASED