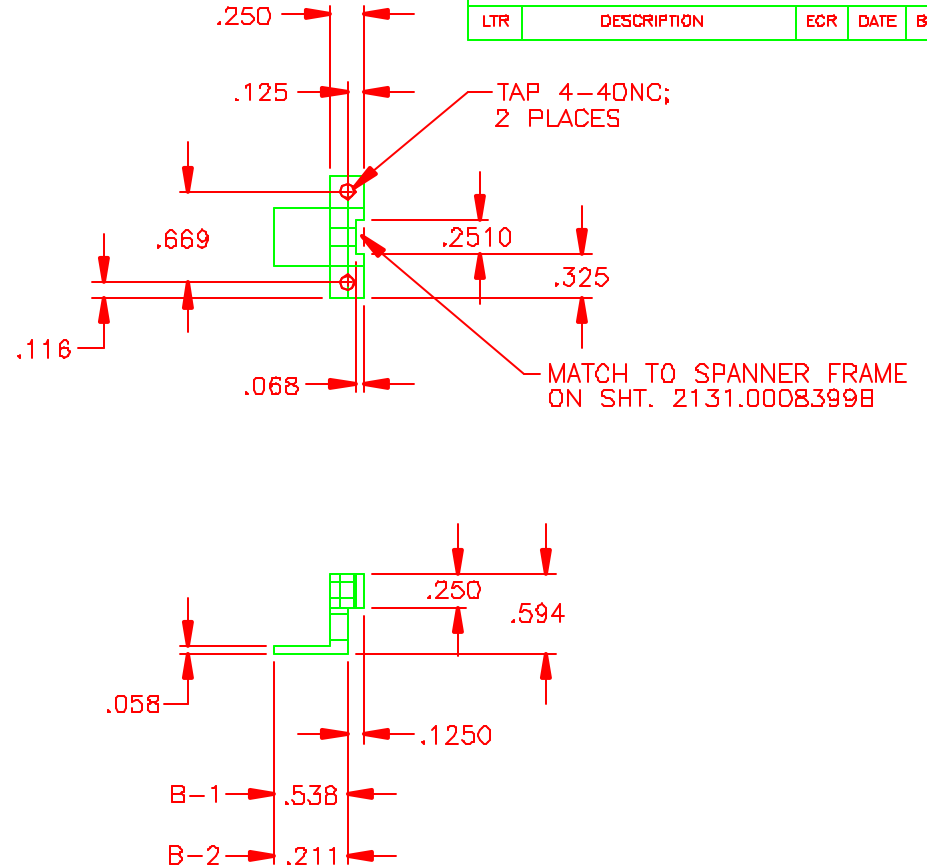
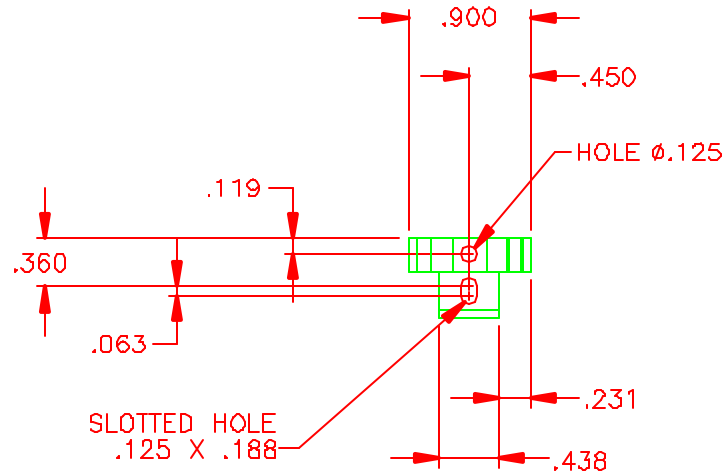


**NOTES:**

1. REMOVE ALL BURRS AND SHARP EDGES; 0.015 R MAX.
2. MACHINED SURFACE ROUGHNESS  $\frac{32}{\sqrt{}}$
3. MAT'L: FABRICATE FROM OFHC COPPER.
4. FINISH: ELECTRO-POLISH



| REVISIONS |             |     |      |    |      |
|-----------|-------------|-----|------|----|------|
| LTR       | DESCRIPTION | ECR | DATE | BY | APRV |

| PART NO. | NOTE:               |
|----------|---------------------|
| B-1      | AS SHOWN, ONE REQ'D |
| B-2      | AS SHOWN, ONE REQ'D |

TOLERANCES UNLESS OTHERWISE NOTED  
 DECIMALS FRACTIONS ANGULAR  
 .XX  $\pm$  .02  $\pm$  0°30'  
 .XXX  $\pm$  .005  
 .XXXX  $\pm$  .0010

NATIONAL OPTICAL ASTRONOMY OBSERVATORIES  
 OPERATED BY THE  
 ASSOCIATION OF UNIVERSITIES FOR RESEARCH IN ASTRONOMY  
 UNDER COOPERATIVE AGREEMENT WITH  
 NATIONAL SCIENCE FOUNDATION

|                                       |                        |  |             |      |                         |              |
|---------------------------------------|------------------------|--|-------------|------|-------------------------|--------------|
| NEXT ASSEMBLY<br>2131.0008404D        |                        | NAME<br>HEAT SINK CLIPS;<br>DETECTOR MOUNT |             |      | REF FILE<br>1307        |              |
|                                       |                        |  |             |      | USED ON<br>CRYOCAM      |              |
| SCALE<br>FULL                         | DESIGNED BY<br>RDB     | DATE<br>2/21/01                            | APPROVED BY | DATE | DWG NO<br>2131.0008398B |              |
| DRAWING PRODUCED USING<br>AUTOCAD R14 | DRAWN BY<br>R. BLAKLEY | DATE<br>2/21/01                            | APPROVED BY | DATE | REV                     |              |
| ISSUED                                | CHECKED BY<br>RDB      | DATE<br>3/28/01                            | APPROVED BY | DATE | RELEASED                | SHEET 1 OF 1 |