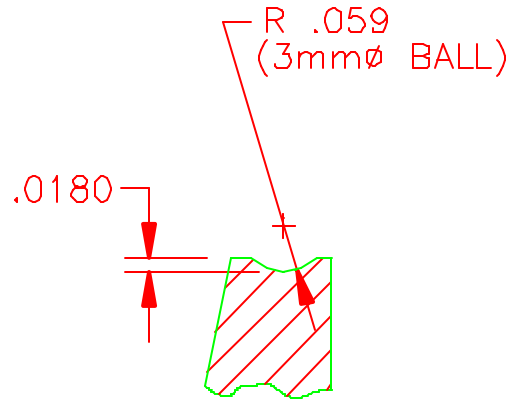
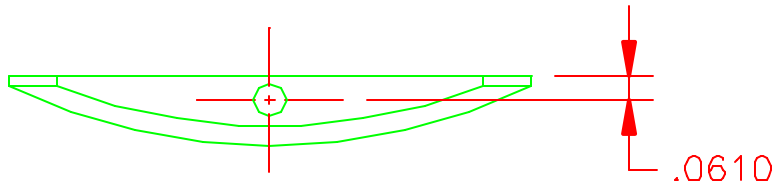


**NOTES:**

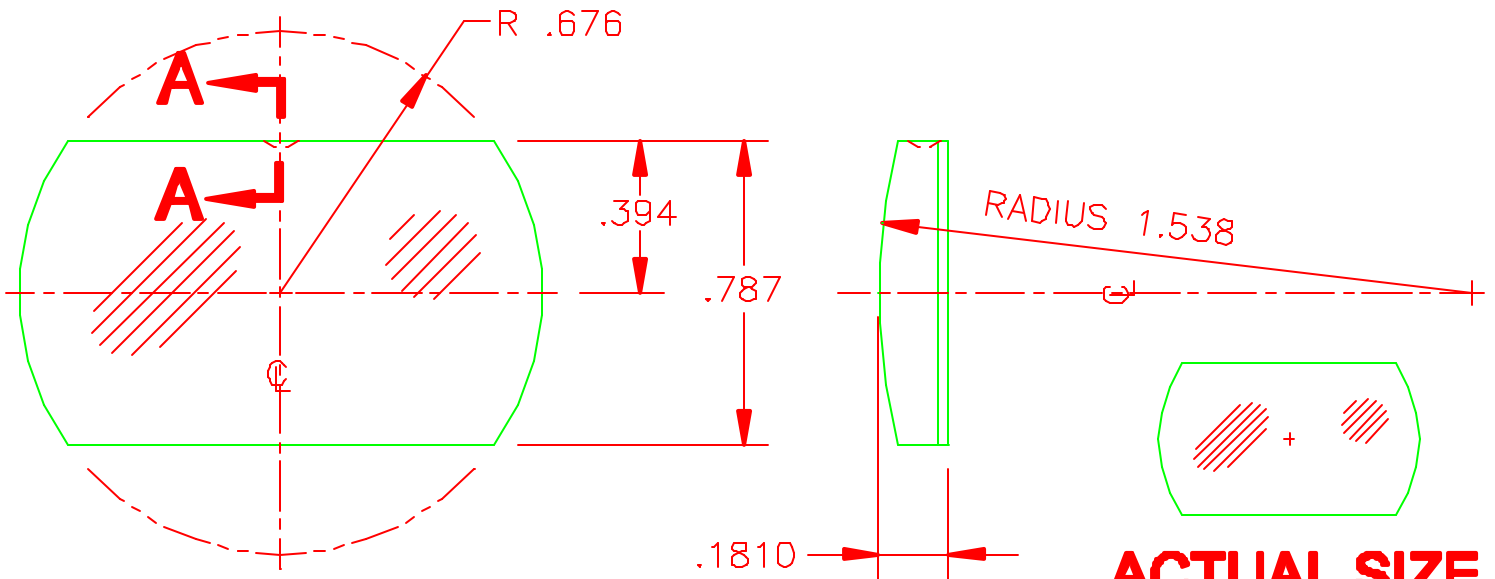
1. DIMENSIONS IN INCHES.
2. MATERIAL IS BK7 PER MIL-G-174.
3. MANUFACTURE PER MIL-O-13830.
4. PITCH POLISH TO TEST PLATE WITHIN ONE WAVE OF FLATNESS & POWER.
5. POLISH CONCAVITY OF DIMPLE SMOOTH & RADIUS OUTSIDE EDGES (THIS ISN'T AN OPTICAL SURFACE).
6. OPTICAL SURFACE FINISH: 40-20 MIN.
7. MINIMUM BREAK ALL EDGES AS IS PRACTICABLE.
8. POLISH ALL SURFACES SMOOTH TO REMOVE ALL SCRATCHES & PITS AS SOURCES OF COLD CRACKING.
9. MAGNESIUM FLOURIDE COAT ONE LENS. OTHERS TO BE COATED COMMERCIALY FOR COATING DESIRED.

REVISIONS

LTR	DESCRIPTION	ECR	DATE	BY	APRV



**SECTION A-A**

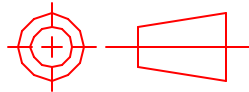


**ACTUAL SIZE**

2131.0008396A

DWG NO

TOLERANCES UNLESS OTHERWISE NOTED  
 .XX ±.03 ANGULAR  
 .XXX ±.005 UN. NTD.  
 .XXXX ±.0020



THIRD ANGLE PROJECTION

NATIONAL OPTICAL ASTRONOMY OBSERVATORIES  
 OPERATED BY THE  
 ASSOCIATION OF UNIVERSITIES FOR RESEARCH IN ASTRONOMY  
 UNDER COOPERATIVE AGREEMENT WITH  
 NATIONAL SCIENCE FOUNDATION

DO NOT SCALE DRAWING

NAME

USED ON

REF. FILE

NEXT ASSEMBLY

**2131.0008404D**

**FIELD-FLATTENER LENS;  
 DETECTOR MOUNT**

**CRYOCAM 1307**

DWG SIZE

REV

**A**

SCALE: 2/1

DESIGNED BY  
RDB

DATE  
MAR 01

CHECKED BY  
RDB

DATE  
MAR 01

DWG NO

**2131.0008396A**

DWG PRODUCED USING  
AUTOCAD R14

DRAWN BY  
RDB

DATE  
MAR 01

APPROVED BY

DATE

PRINT ISSUED

DATE

APPROVED BY

DATE

RELEASED

SHEET 1 OF 1