

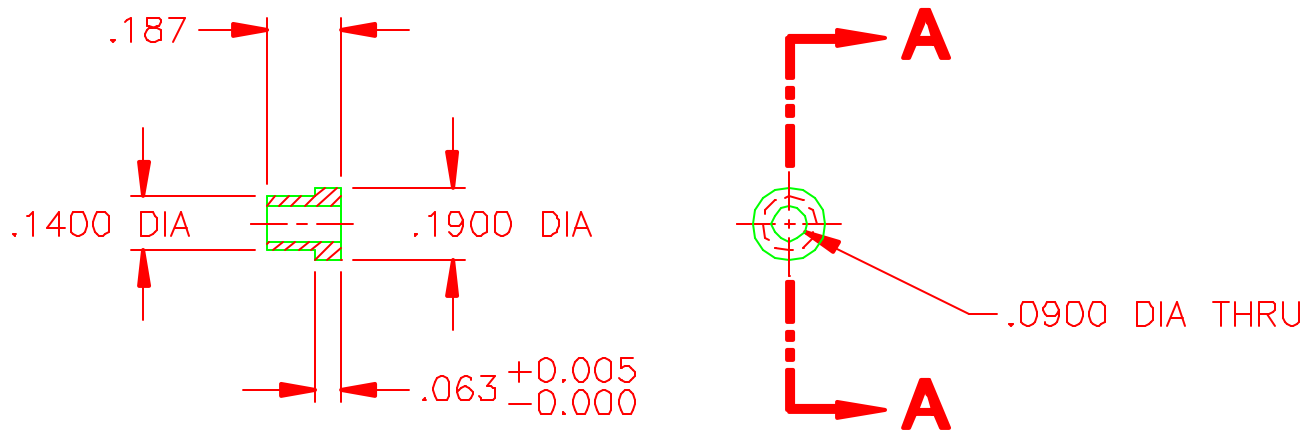
**NOTES:**

1. REMOVE ALL BURRS AND SHARP EDGES; 0.015 R MAX.
2. MACHINED SURFACE ROUGHNESS  $62\sqrt{}$
3. MATERIAL – NEMA GRADE G-10
4. FINISH – HIGH PRESSURE LAMINATE

REVISIONS

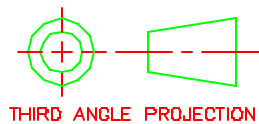
LTR	DESCRIPTION	ECR	DATE	BY	APRV
-----	-------------	-----	------	----	------

DWG NO 2131.0008395A



**SECTION A-A**

TOLERANCES UNLESS OTHERWISE NOTED  
 .XX ±.03 ANGULAR  
 .XXX ±.005 UN. NTD.  
 .XXXX ±.0010



NATIONAL OPTICAL ASTRONOMY OBSERVATORIES  
 OPERATED BY THE  
 ASSOCIATION OF UNIVERSITIES FOR RESEARCH IN ASTRONOMY  
 UNDER COOPERATIVE AGREEMENT WITH  
 NATIONAL SCIENCE FOUNDATION

DO NOT SCALE DRAWING

NAME

USED ON

REF. FILE

NEXT ASSEMBLY

**INSULATOR BUSHING;  
 DETECTOR MOUNT**

**CRYOCAM 1307**

**2131.0008404D**

DWG SIZE

REV

**A**

SCALE: 2/1

DESIGNED BY  
RDB

DATE  
MAR 01

CHECKED BY  
RDB

DATE  
MAR 01

DWG NO

**2131.0008395A**

DWG PRODUCED USING  
AUTOCAD R14

DRAWN BY  
RDB

DATE  
MAR 01

APPROVED BY

DATE

PRINT ISSUED

DATE

APPROVED BY

DATE

RELEASED

SHEET 1 OF 1