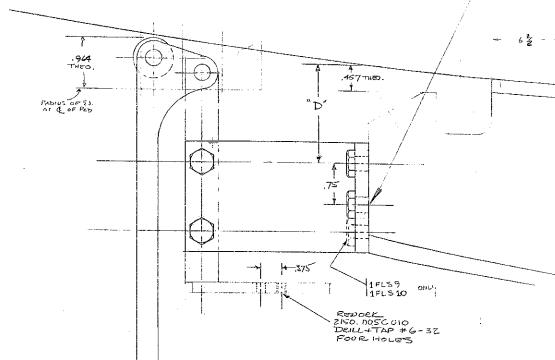
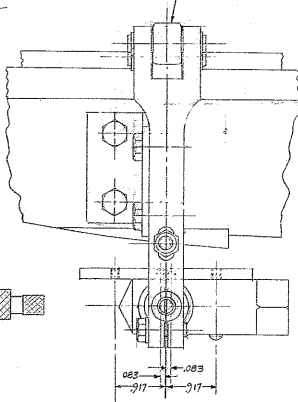
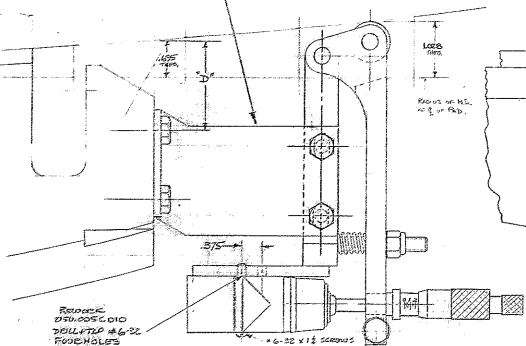


NEW PAIR
Z150.110B013

REMOVE ALL Z150.005B011
TO EQUIP FOR 03, 10 & D
CONCERNING NOTES.

Z150.005C.009
REMOVE TO ADD
9/32 DIA. HOLE AS SHOWN



NORTH RADIAL BEARINGS

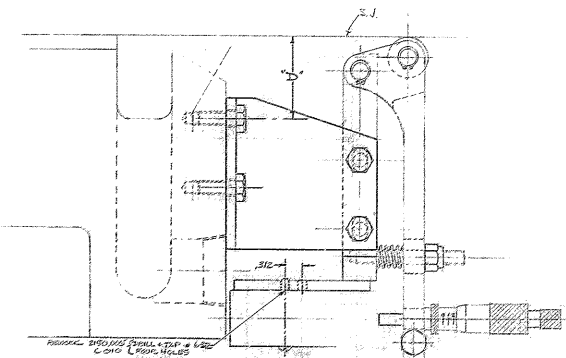
SOUTH RADIAL BEARINGS

EAST	1FLS1	1.661	WEST	2FLS 4	1.639
SOUTH EAST	1FLS2	1.622	EAST	1FLS 7	1.787
NORTH EAST	1FLS2	1.622	NORTH EAST	1FLS 8	1.797
WEST	1FLS3	1.643	WEST	1FLS 9	1.803
			SOUTH WEST	1FLS 11	1.808
			NORTH WEST	1FLS 12	1.803

EAST	1FLS 7	1.787	WEST	1FLS 20	1.783
SOUTH EAST	1FLS 8	1.797	EAST	1FLS 21	1.783
NORTH EAST	1FLS 9	1.803	SOUTH WEST	1FLS 22	1.783
WEST	1FLS 9	1.803	NORTH WEST	1FLS 23	1.783

1033
642
483

324
322
327



OUTER THRUST BEARINGS

FOR INNER THRUST BEARING LIMIT SWITCHES
SEE DRAWING Z120 KD 50

EAST PAIR	1FLS 15	1.406	WEST PAIR	1FLS 17	1.397
UPPER	1FLS 15	1.406	UPPER	1FLS 17	1.397
LOWER	1FLS 20	1.406	LOWER	1FLS 23	1.398

EAST PAIR	1FLS 14	1.406	WEST PAIR	1FLS 16	1.388
UPPER EAST	1FLS 14	1.392	UPPER WEST	1FLS 15	1.407
UPPER WEST	1FLS 13	1.392	LOWER EAST	1FLS 24	1.407
LOWER EAST	1FLS 19	1.408	LOWER WEST	1FLS 22	1.408
LOWER WEST	1FLS 21	1.408			

KITT PEAK NATIONAL OBSERVATORY											
OPERATED BY THE ASSOCIATION OF UNIVERSITIES FOR RESEARCH IN ASTRONOMY, INC. UNDER CONTRACT WITH NATIONAL SCIENCE FOUNDATION											
150" STELLAR TELESCOPE MOUNTING										REF. 1124 / 1125	
STUDY LAYOUT OF INSTALLATION OF HYDROSTATIC BEARING LIMIT SWITCHES										SCALE: FULL	
NAME: _____										PRINT ISSUED	
DESIGNED BY	DATE	APPROVED BY	DATE	DESIGNED BY	DATE	APPROVED BY	DATE	DESIGNED BY	DATE	APPROVED BY	DATE
A	AS BUILT			2289	7-20-79	JK					
LET.	REVISION	ECR	DATE	BY	CHECKED BY	DATE	BY	CHECKED BY	DATE	BY	DATE
DRAWING NUMBER										REV.	
Z120 K-D 52										A	
FEB 7-24-79											