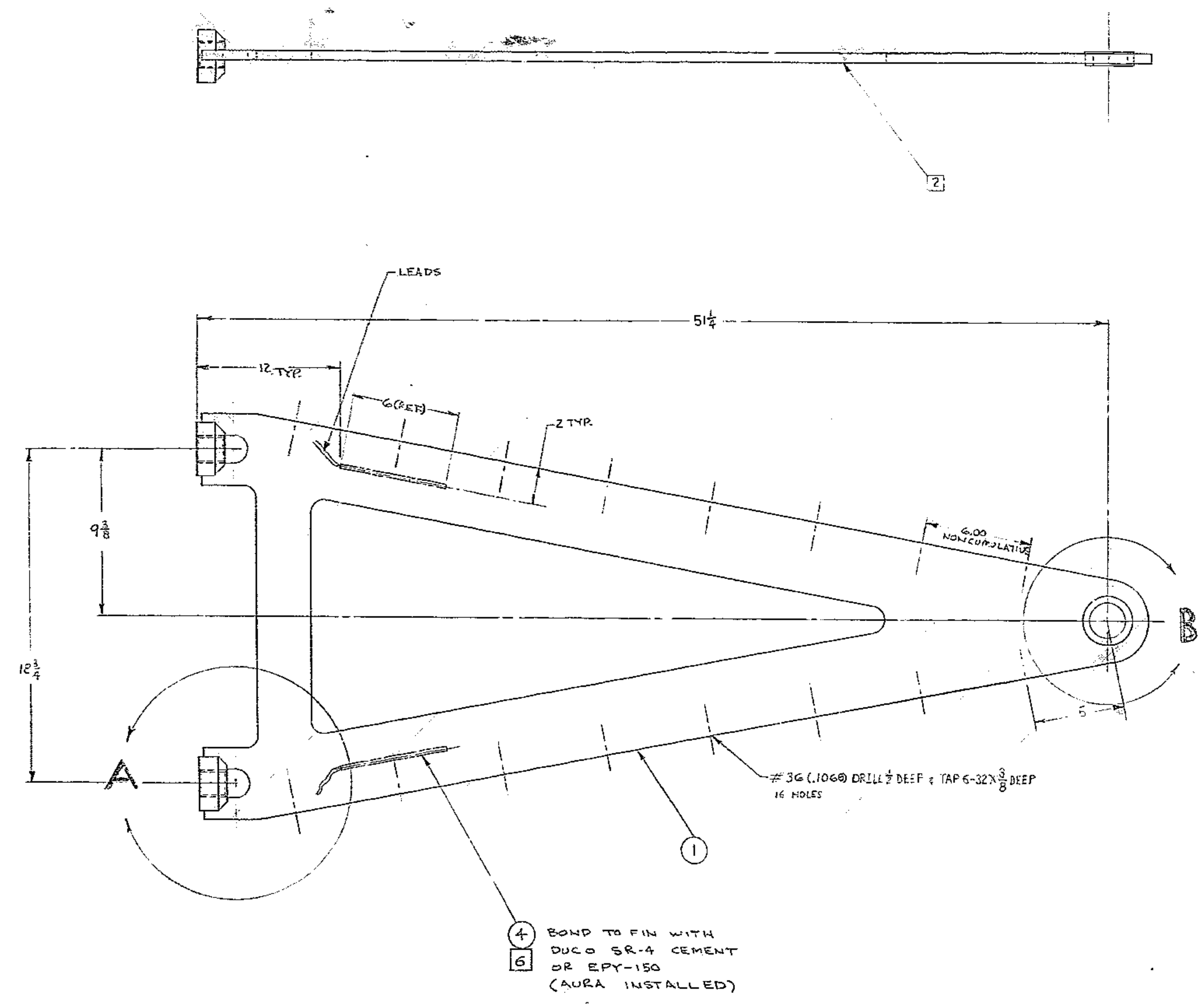
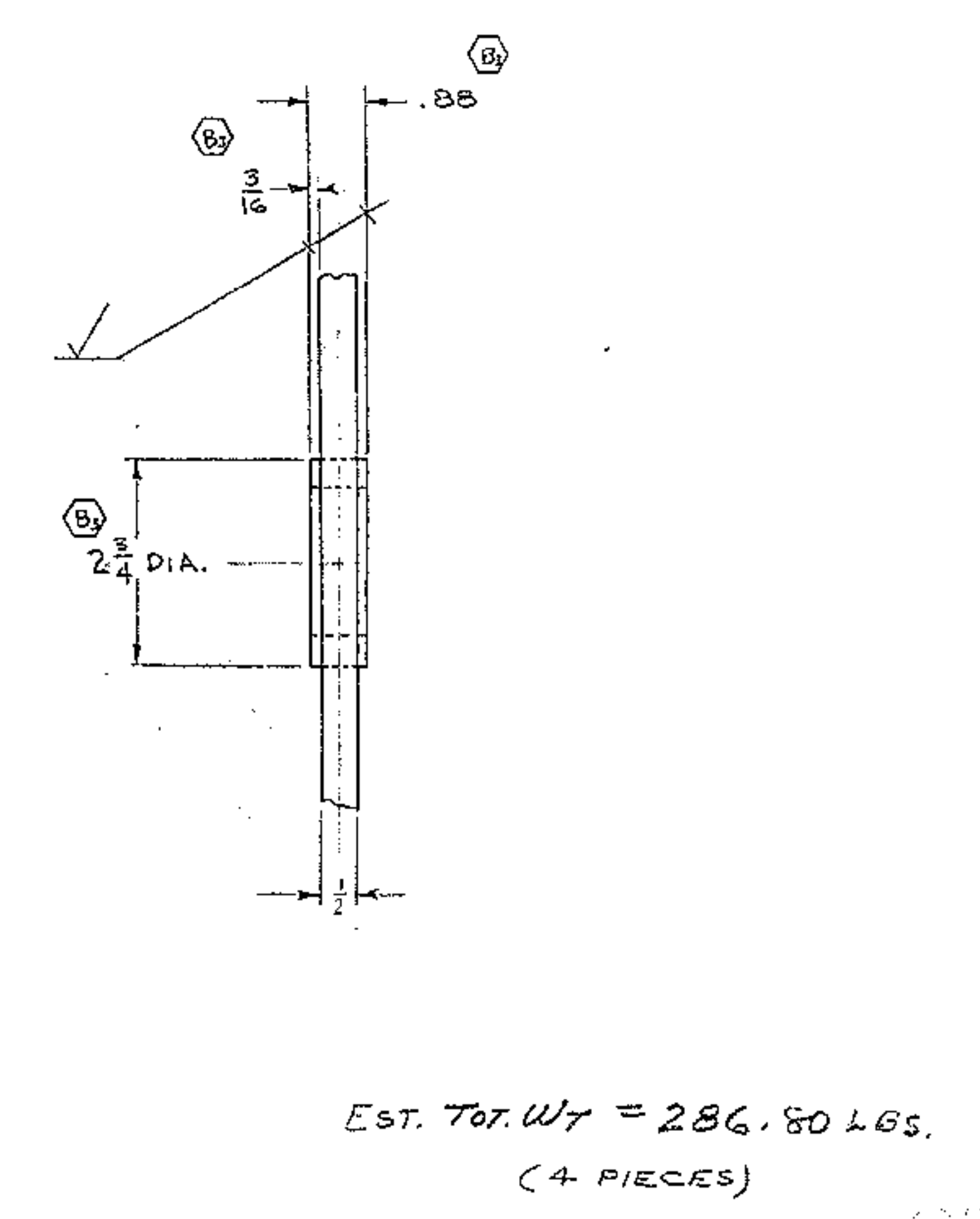
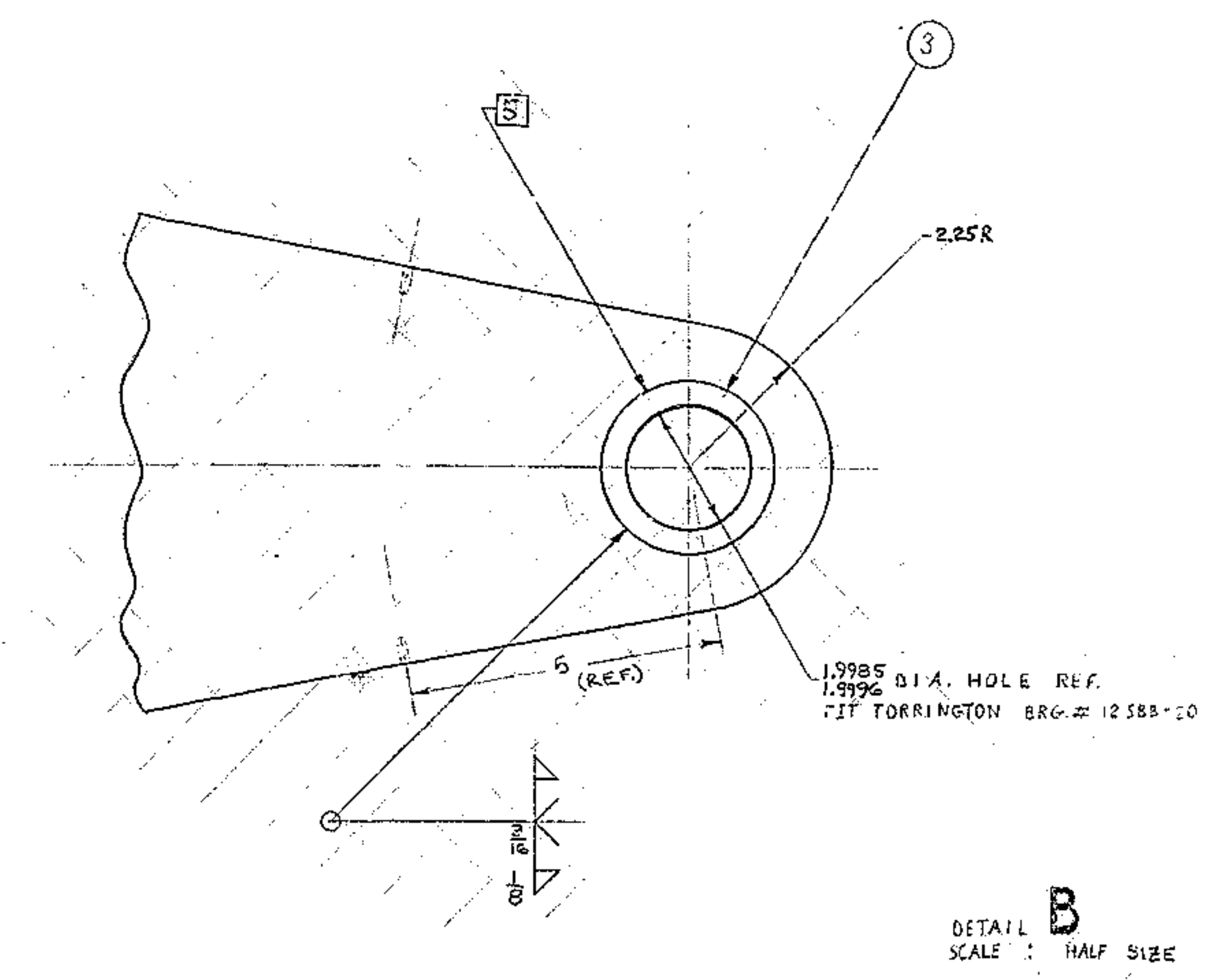
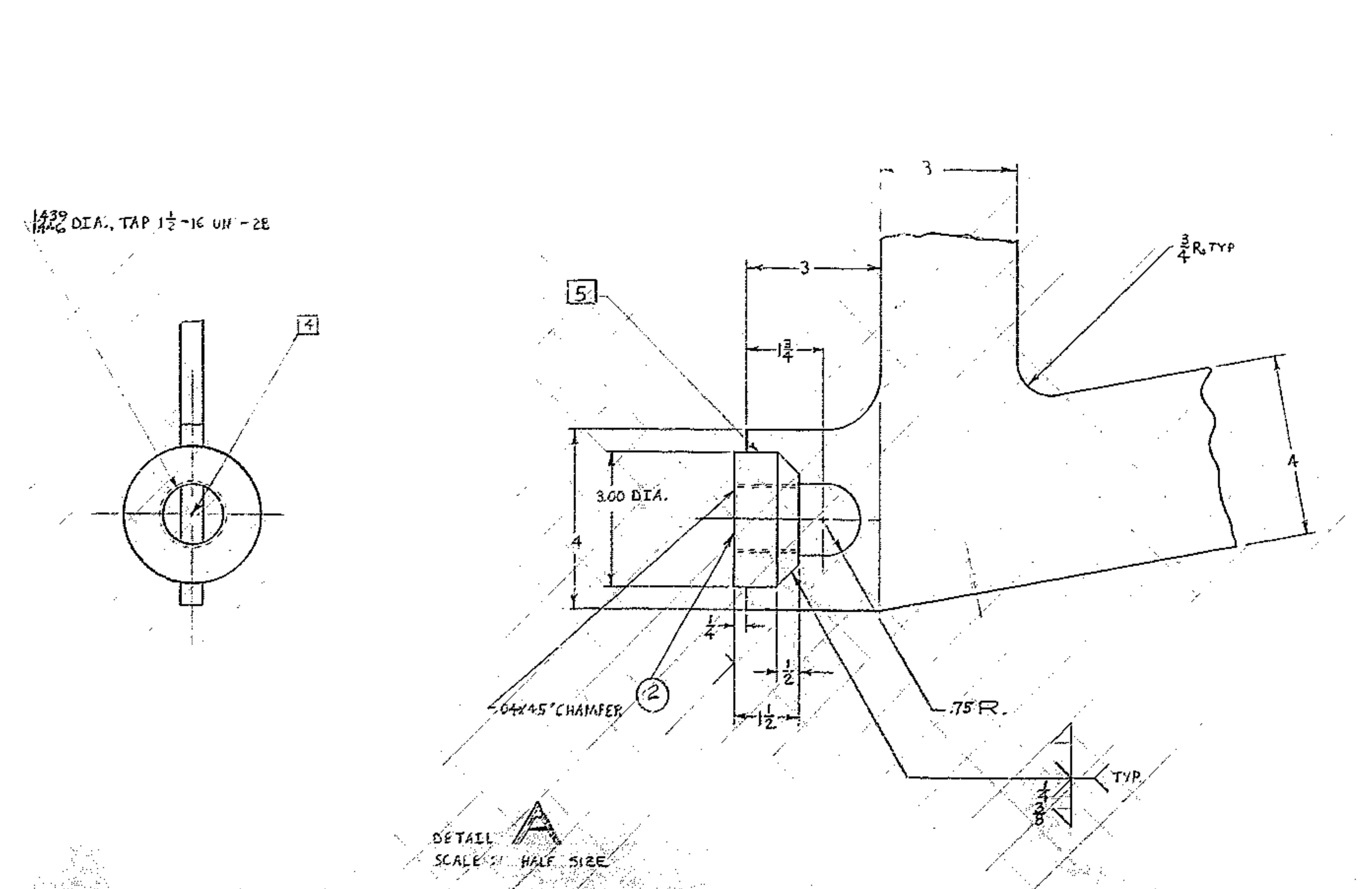


BILL OF MATERIAL				
ITEM	QTY	MATERIAL	DESCRIPTION	WEIGHT
1	4	ASTM A-36	R 22# X 5 X 5 1/2	100
2	4	ALG 4130	ROD 3 DIA X 1 1/2	6
3	4	ASTM A-36	ROD 2 DIA X 1	3
4	8		SR-4 STRAIN GAGE TYPE A-9	



- NOTES:
- FABRICATION TOLERANCES EXCEPT AS NOTED
UP TO 10 INCHES ± 1/16
10 TO 50 INCHES ± 1/8
50 INCHES AND OVER ± 1/4
 - FILES PART TO BE STRAIGHT TO WITHIN 1/16
 - THERMAL STRESS RELIEVE AFTER WELDING AND BEFORE MACHINING.
 - CENTER TO BE LOCATED ± .01 WITHIN .005
 - WELD PER AWS 10018-D2 OR EQUIV.
 - MANUFACTURED BY BALDWIN-LIMA-HAMILTON CO. ELECTRONICS & INSTRUMENTATION DIVISION WALTHAM, MASSACHUSETTS 02154 (AURA FURNISHED)



OBSTOLET
SUPERSEDED BY
210,570 D11
DRAWING NO. 1189

FOR ASSEMBLY SEE				TOLERANCES UNLESS OTHERWISE NOTED				KITT PEAK NATIONAL OBSERVATORY			
DESIGNED BY	DATE	APPROVED BY	DATE	DECIMAL DIMENSIONS	± .010	OPERATED BY THE	ASSOCIATION OF UNIVERSITIES FOR RESEARCH IN ASTRONOMY, INC.	FILE	1189	SCALE	AS NOTED
FOR ALL REVISIONS SEE SHEET #	1	FRACTIONAL DIMENSIONS	UP TO 16" ± 1/64	UNDER CONTRACT WITH	NATIONAL SCIENCE FOUNDATION	NAME	DETAILS OF SUPPORT SYSTEM FOR SECONDARY & PRIME FOCUS ASSY. TO INNER FLIP RING	SCALE	AS NOTED	PRINT	ISSUED
DESIGNED BY	DATE	APPROVED BY	DATE	BREAK SHARP EDGES	ALL SURFACES TO HAVE FINISH UNLESS OTHERWISE NOTED.	DATE	12-10-59	DRAWING NUMBER	2120	REV.	B
LECT.	REVISION	COR.	DATE	BY		DATE	12-10-59				