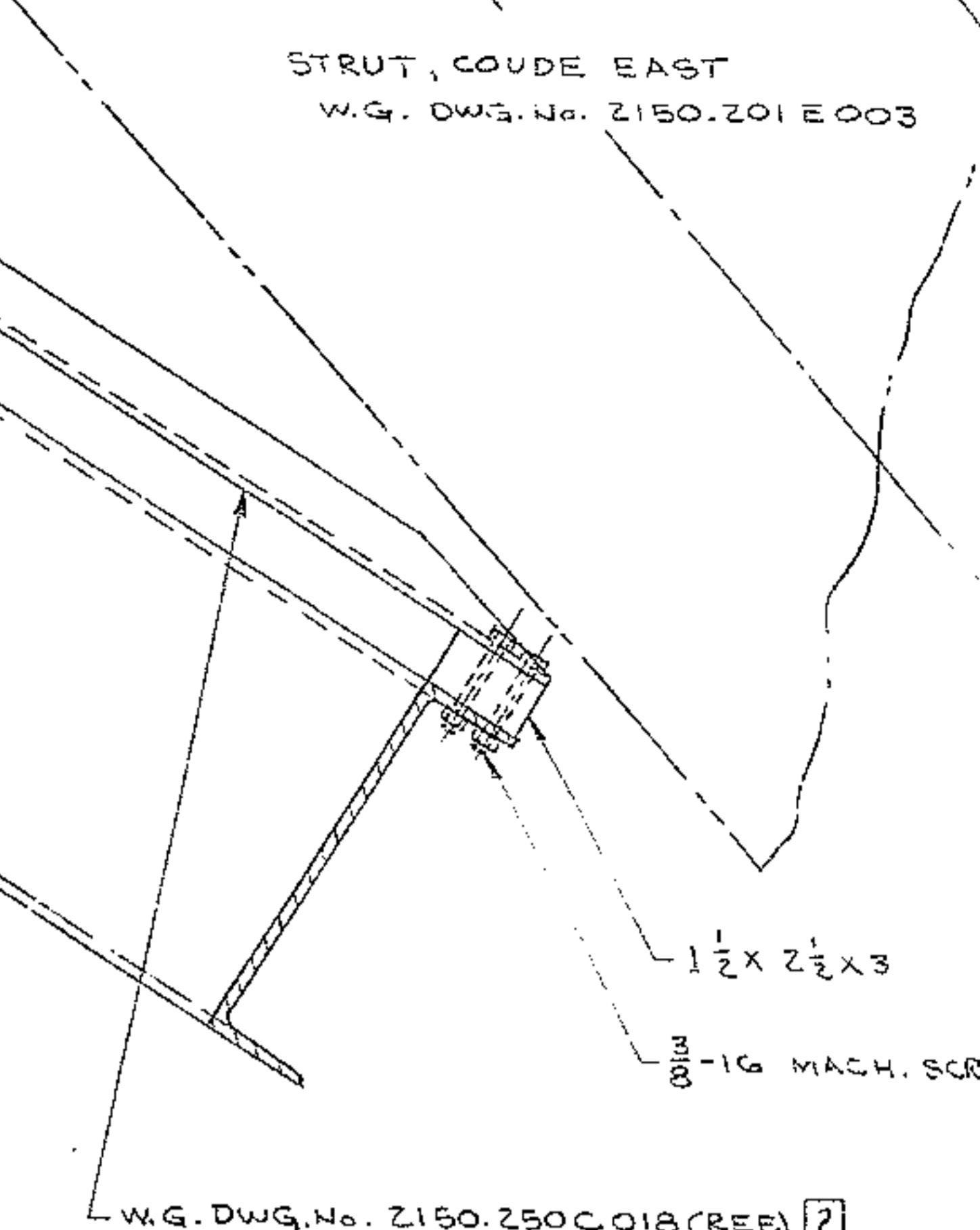
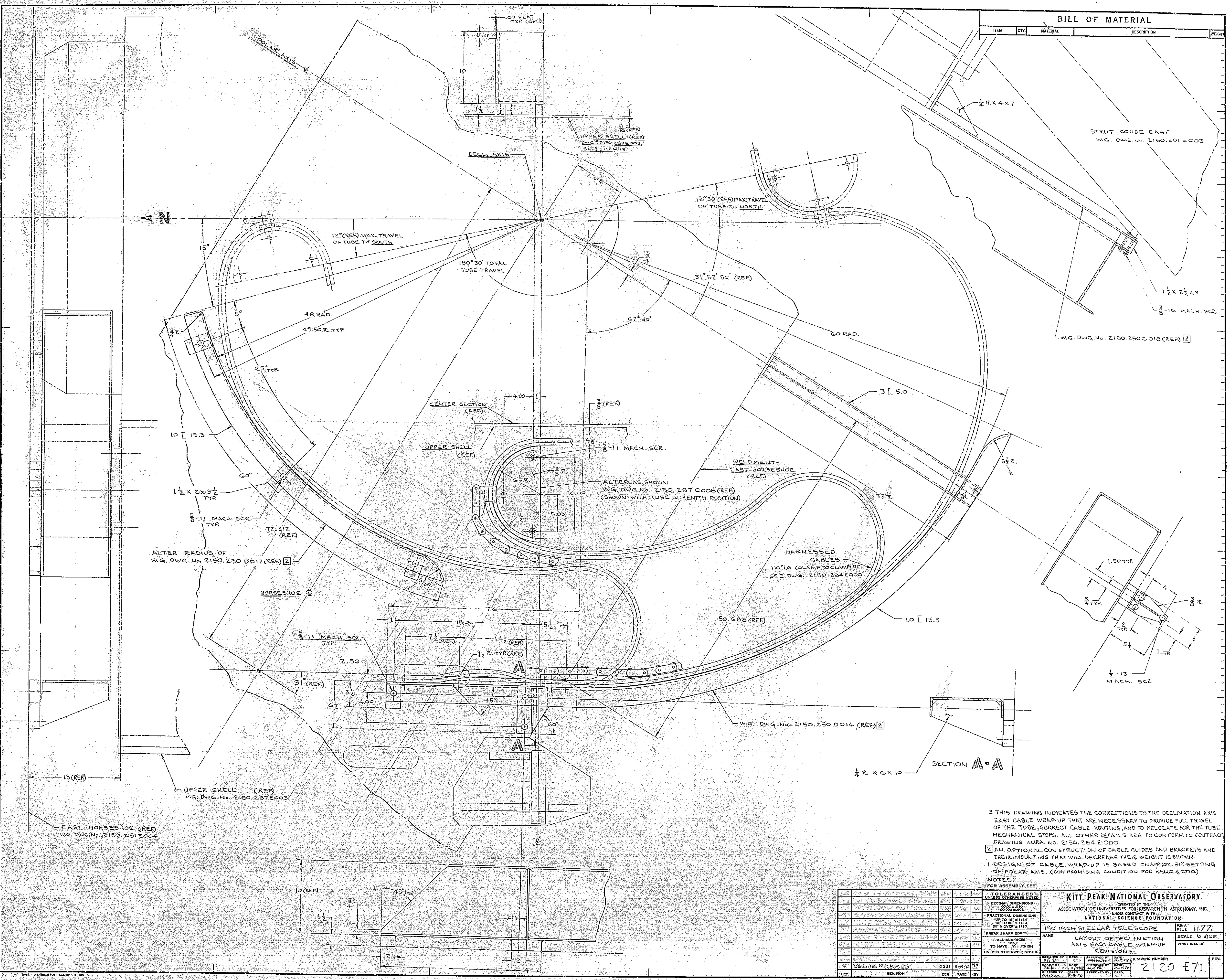
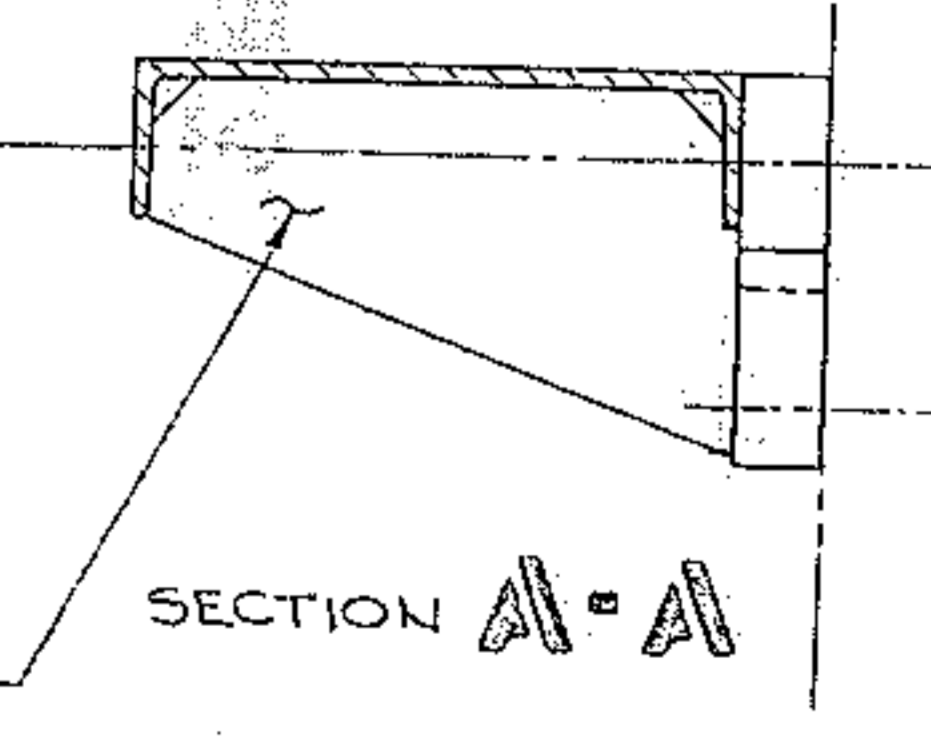
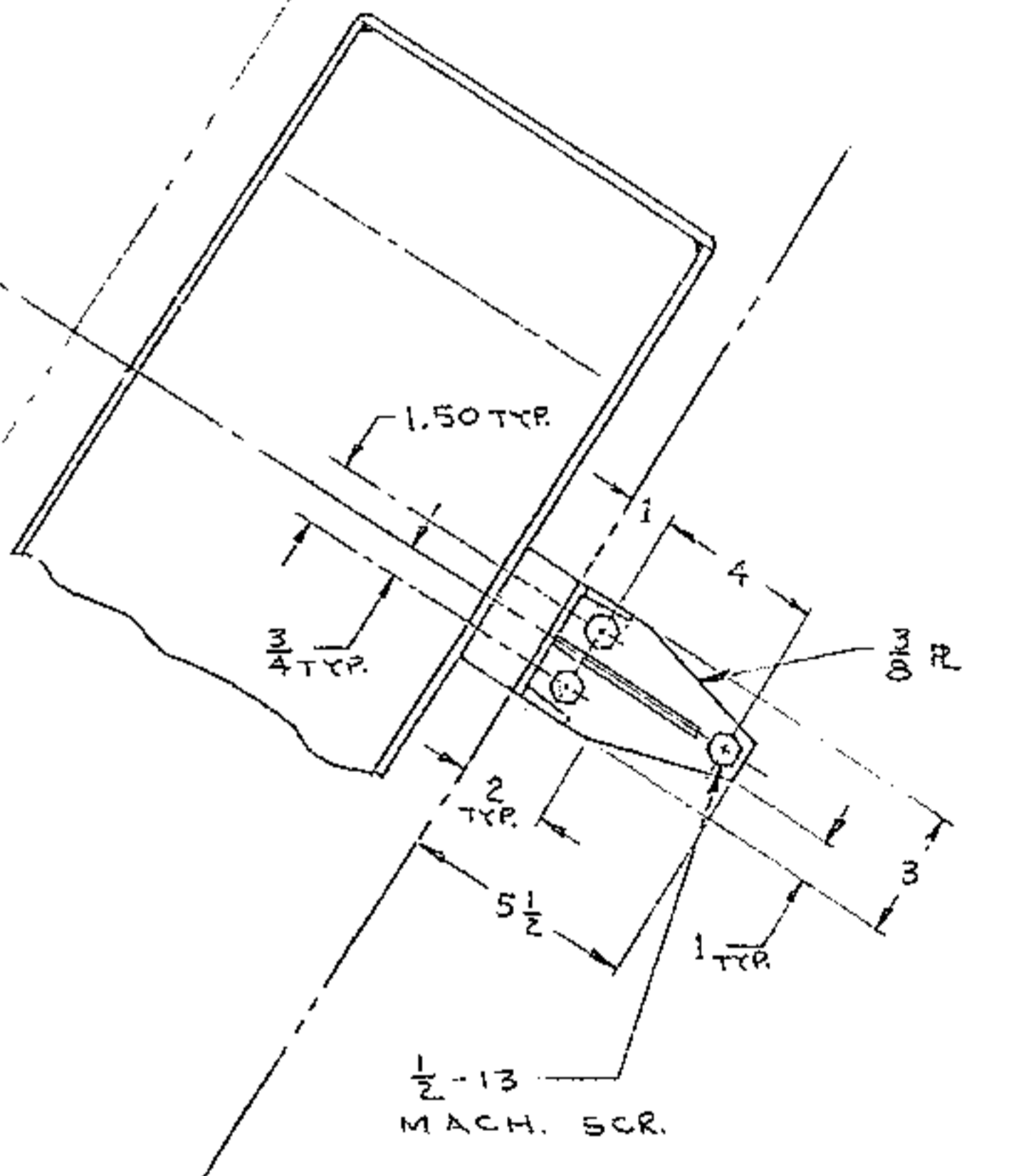


BILL OF MATERIAL

ITEM	QTY	MATERIAL	DESCRIPTION	WEIGHT
------	-----	----------	-------------	--------



W.G. DWG. No. 2150.250 C018 (REF) [2]



3. THIS DRAWING INDICATES THE CORRECTIONS TO THE DECLINATION AXIS EAST CABLE WRAP-UP THAT ARE NECESSARY TO PROVIDE FULL TRAVEL OF THE TUBE, CORRECT CABLE ROUTING, AND TO RELOCATE FOR THE TUBE MECHANICAL STOPS. ALL OTHER DETAILS ARE TO CONFORM TO CONTRACT DRAWING AURA NO. 2150.284 E000.

[2] AN OPTIONAL CONSTRUCTION OF CABLE GUIDES AND BRACKETS AND THEIR MOUNTING THAT WILL DECREASE THEIR WEIGHT IS SHOWN.

1. DESIGN OF CABLE WRAP-UP IS BASED ON APPROX. 31° SETTING OF POLAR AXIS. (COMPRIMISING CONDITION FOR KEND. & CHID.)

NOTES FOR ASSEMBLY SEE

TOLERANCES UNLESS OTHERWISE NOTED		KITT PEAK NATIONAL OBSERVATORY	
DECIMAL DIMENSIONS	0.000 ± 0.010	OPERATED BY THE	ASSOCIATION OF UNIVERSITIES FOR RESEARCH IN ASTRONOMY, INC.
FRACTIONAL DIMENSIONS	UP TO 1/8 ± 0.005	UNDER CONTRACT WITH	NATIONAL SCIENCE FOUNDATION
BREAK SHARP EDGES		180 INCH STELLAR TELESCOPE	REF FILE 1177
ALL SURFACES TO HAVE 125 FINISH UNLESS OTHERWISE NOTED.		NAME	LAYOUT OF DECLINATION AXIS EAST CABLE WRAP-UP REVISIONS
DATE	APPROVED BY	DATE	APPROVED BY
DESIGNED BY	DATE	APPROVED BY	DATE
CHECKED BY	DATE	APPROVED BY	DATE
REVISION	DATE	BY	DATE

2120 E71