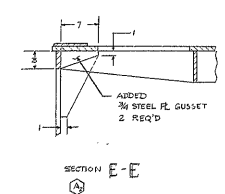
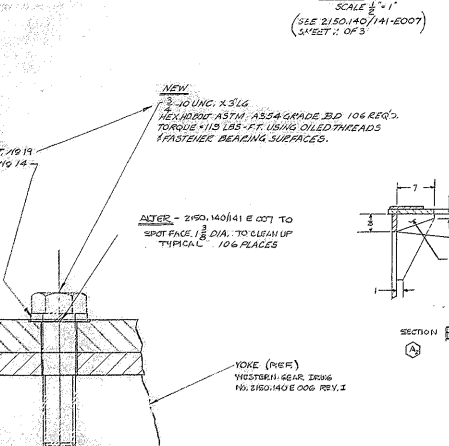
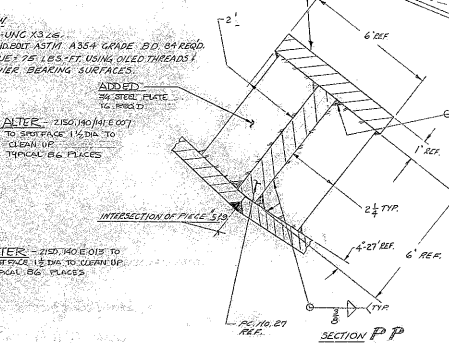
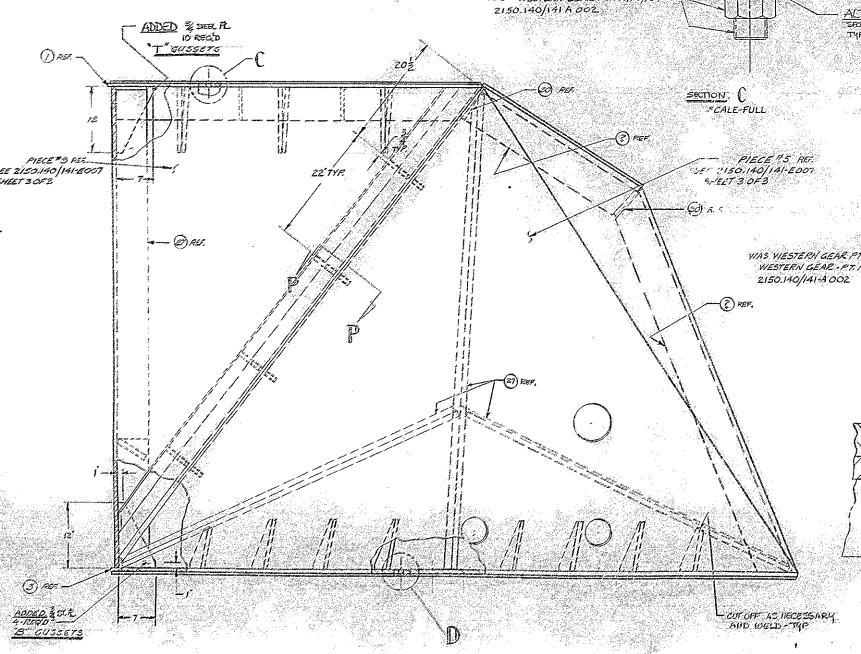
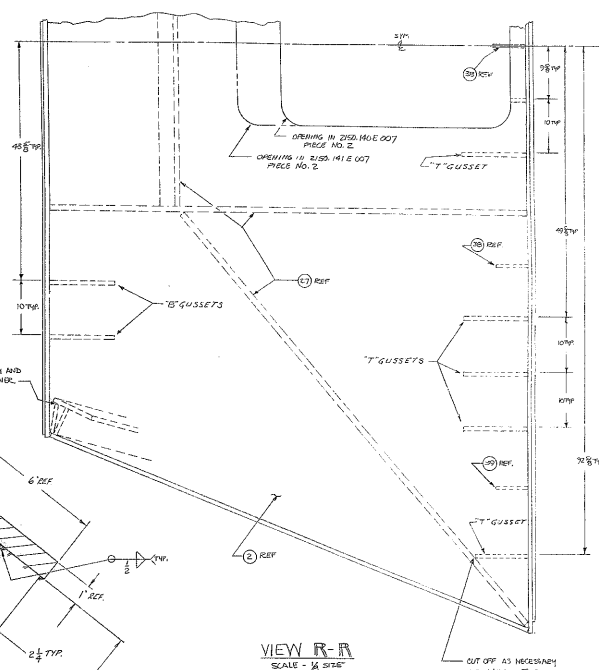
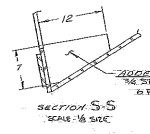
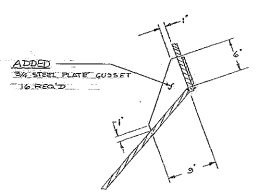
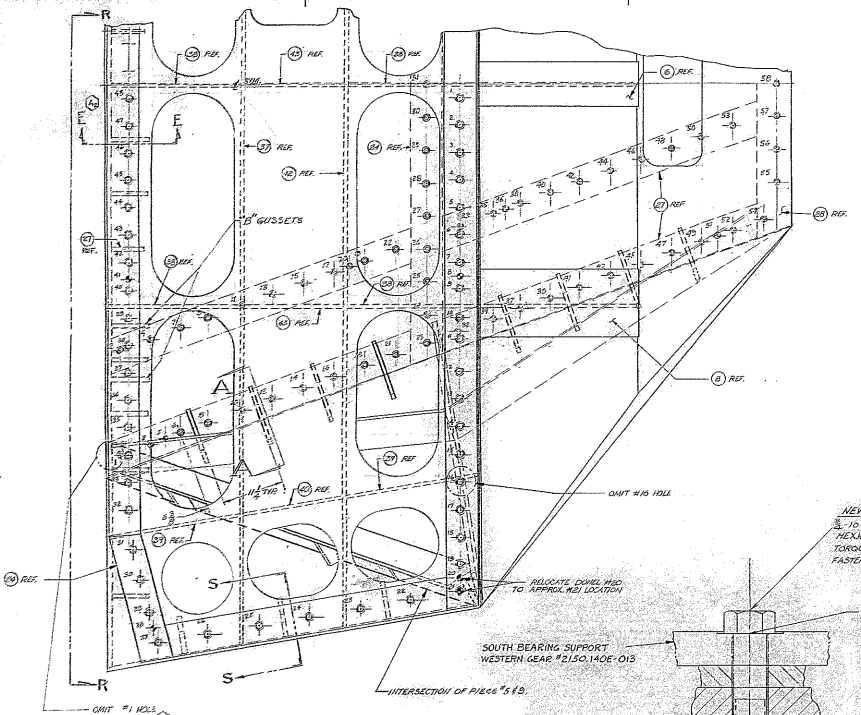


BILL OF MATERIAL				
ITEM	QTY	MATERIAL	DESCRIPTION	WEIGHT



NOTE
ASSEMBLY MUST BE THERMAL STRESS
RELIEVED AFTER INCORPORATION OF THE
WELDING CALLED FOR ON THIS DRAWING.
THE FOLLOWING PARTS ARE DELETED OR
REDUCED IN QUANTITY
WESTERN GEAR PT. NO'S 17 & 20 ON 2150.140 A002
REV. B
WESTERN GEAR PT. NO'S 19 & 21 ON 2150.141 A002
REV. B

FOR DETAILS SEE THE FOLLOWING
WESTERN GEAR CORP. SHOP DRAWINGS:
2150.140 A002 REV. B BASE FRAME ASSY B/M (P/NO)
2150.141 A002 REV. B BASE FRAME ASSY B/M (C/T/D)
2150.140 E002 REV. B BASE FRAME ASSY (P/NO)
2150.141 E002 REV. B BASE FRAME ASSY (C/T/D)
2150.140 E007 REV. B RA DRIVE SUPPORT SHEET 1 THRU 3 (P/NO)
2150.141 E007 REV. B RA DRIVE SUPPORT SHEET 1 THRU 3 (C/T/D)
2150.140 E015 REV. H SOUTH BEARING SUPPORT ASSY (P/NO)
2150.141 E015 REV. H SOUTH BEARING SUPPORT ASSY (C/T/D)

REVISIONS PER RECOMMENDATIONS
IN ADEQUACY REPORT P. 2 AS ASSOCIATED.

FOR ASSEMBLY SEE		KITT PEAK NATIONAL OBSERVATORY	
DATE	BY	ASSOCIATION OF UNIVERSITIES FOR RESEARCH IN ASTRONOMY, INC.	
DATE	BY	NATIONAL SCIENCE FOUNDATION	
DATE	BY	130 IN. STELLAR TELESCOPE	
DATE	BY	LAYOUT OF REVISIONS	
DATE	BY	TO STRENGTHEN RA DRIVE SUP	
DATE	BY	SCALE	REV.
DATE	BY	SCALE	2120-E39