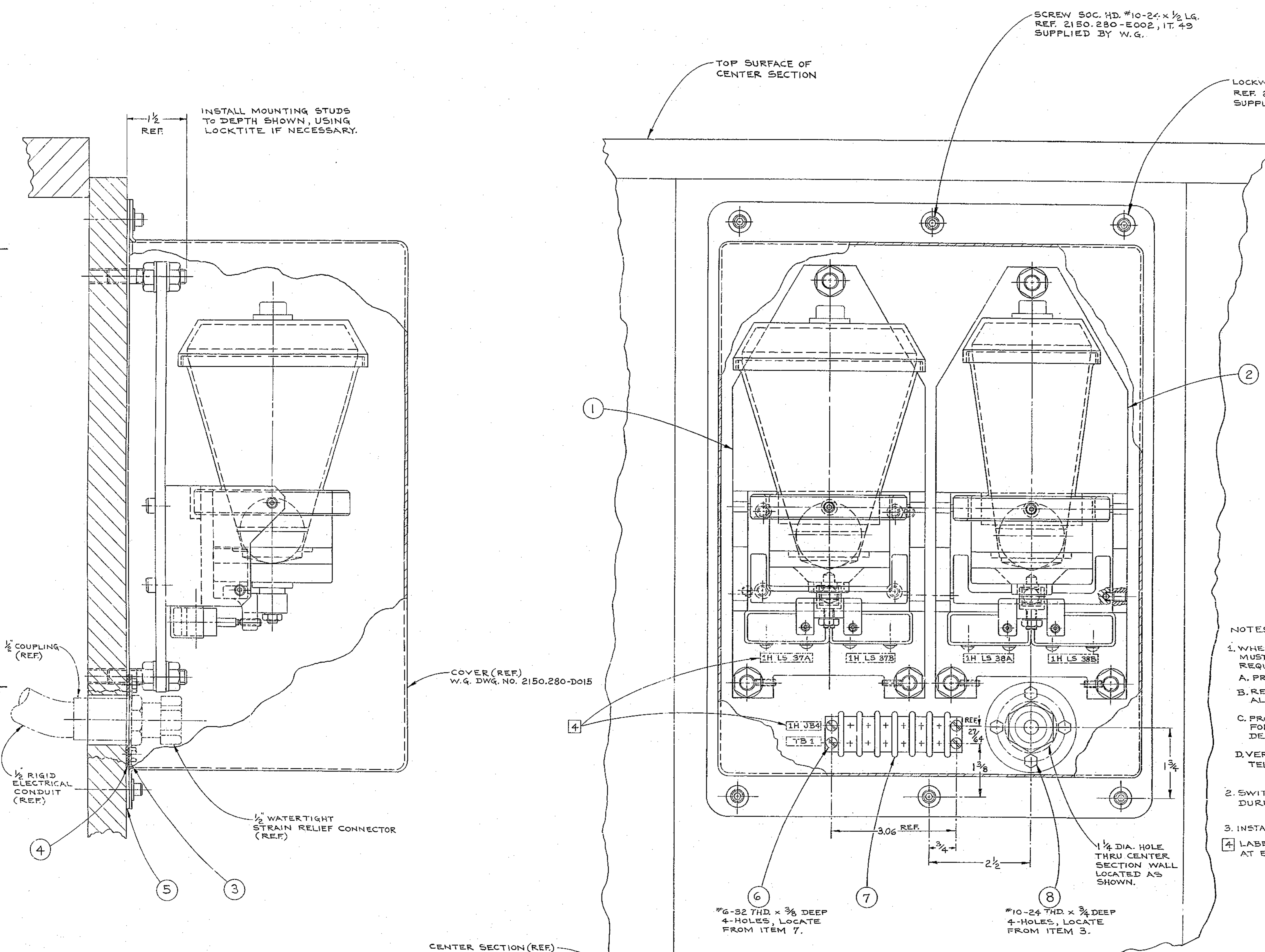


BILL OF MATERIAL

ITEM	QTY.	MATERIAL	DESCRIPTION	W.G. NO.
1	1	2150.290-E002	15" HORIZON DISCRIMINATING SWITCH ASSEMBLY	
2	1	2150.290-E102	6" HORIZON DISCRIMINATING SWITCH ASSEMBLY	
3	1	2150.290-B015	WIRING MOUNTING PLATE	
4	1	2150.290-B016	WIRING PLATE GASKET	
5	1	2150.290-D017	COVER GASKET	
6	4	STAINLESS STEEL	#6-32 x 1/2 LG. 3D. HD. MACHINE SCREW	
7	1	COM'L.	6 TERMINAL BARRIER STRIP 1/2" x 1/2" x 1/8"	
8	4	PLATED STEEL	#10-24 x 3/8 LG. HEX. HD. CAP. SCREW	



- NOTES:
- WHEN MOUNTED ON THE TELESCOPE THE SWITCH ASSEMBLIES MUST BE MANUALLY OPERATED TO DEMONSTRATE THE FOLLOWING REQUIREMENTS.
 - PROPER CONTROL OF THE TELESCOPE DRIVES.
 - RELIABLE OPERATION IN AT LEAST EIGHT POSITIONS, SPACED IN ALL QUADRANTS AROUND THE HORIZON.
 - PROPER SETTING AND ADJUSTMENT OF EACH SWITCH ASSEMBLY FOR OPERATION WITHIN 1/2 DEGREE BEFORE THE TELESCOPE IS DEPRESSED TO THE REQUIRED TUBE OPTICAL DATUM POSITION.
 - VERIFY AUTOMATIC RESET WITHIN 5 DEGREES OF THE REQUIRED TELESCOPE POSITION.
 - SWITCH ASSEMBLIES MUST BE CAREFULLY PACKED AND HANDLED DURING SHIPMENT AND INSTALLATION TO ASSURE RELIABILITY.
 - INSTALL SWITCHES ON SOUTHWEST CORNER OF THE CENTER SECTION.
 - LABEL COMPONENTS PER ELECTRICAL SPECIFICATION REQUIREMENTS AT ELECTRICAL WIRING OF TELESCOPE.

FOR ASSEMBLY SEE W.G. 2150.280-E002

<p>TOLERANCES UNLESS OTHERWISE NOTED</p> <p>DECIMAL DIMENSIONS 0.0005 ± 0.001</p> <p>FRACTIONAL DIMENSIONS UP TO 1/16 ± 1/64 1/8 TO 3/16 ± 1/32 3/16 & OVER ± 1/16</p> <p>BREAK SHARP EDGES</p> <p>ALL SURFACES TO HAVE FINISH UNLESS OTHERWISE NOTED</p>		<p>KITT PEAK NATIONAL OBSERVATORY</p> <p>OPERATED BY THE ASSOCIATION OF UNIVERSITIES FOR RESEARCH IN ASTRONOMY, INC. UNDER CONTRACT WITH NATIONAL SCIENCE FOUNDATION</p> <p>150" STELLAR TELESCOPE</p> <p>LAYOUT OF INSTALLATION OF HORIZON DISCRIMINATING SWITCH ASSEMBLIES</p> <p>SCALE FULL</p> <p>PRINT ISSUED</p>	
<p>DESIGNED BY</p> <p>DRAWN BY</p> <p>CHECKED BY</p> <p>DATE</p>	<p>DATE</p> <p>DATE</p> <p>DATE</p> <p>DATE</p>	<p>DATE</p> <p>DATE</p> <p>DATE</p> <p>DATE</p>	<p>DATE</p> <p>DATE</p> <p>DATE</p> <p>DATE</p>
<p>DRAWING RELEASED</p> <p>REVISION</p>		<p>DATE</p> <p>BY</p>	
<p>2120 E141</p>		<p>2120 E141</p>	