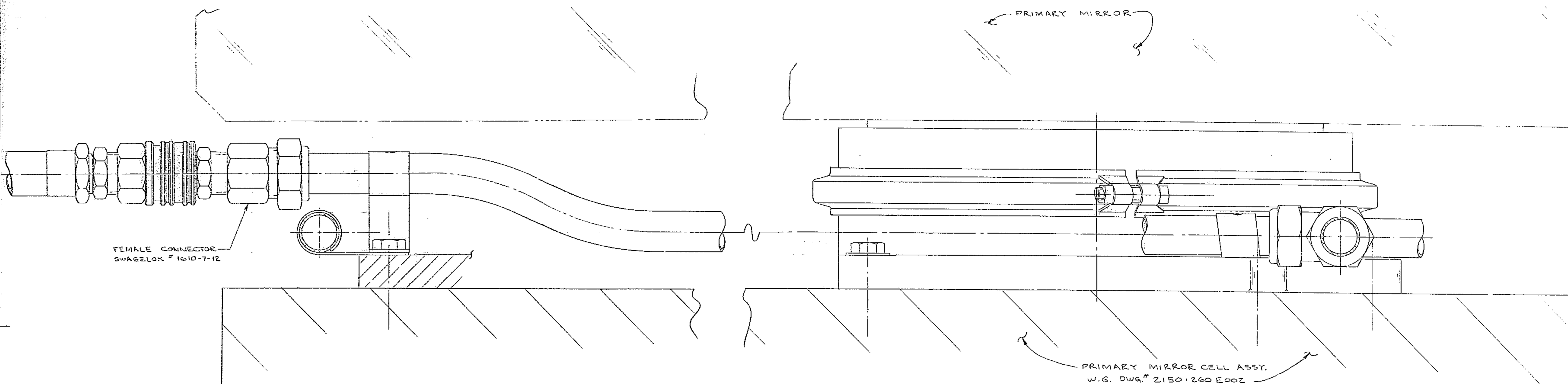


BILL OF MATERIAL

| ITEM | QTY | MATERIAL | DESCRIPTION | WEIGHT |
|------|-----|----------|-------------|--------|
|------|-----|----------|-------------|--------|



SECTION A-A (ROTATED CLOCKWISE)
SEE SHEET 2 OF 3

- (A) NOTE
WESTERN GEAR DRAWINGS SHOULD BE ALTERED AS FOLLOWS
1. 2150.260-E 003 SHEET 1&2 TO SHOW NORTH DIRECTION TO BE TOWARD BOTTOM OF DRAWING.
 2. 2150.260-E 002 TO ADD NOTE THAT ALL PIPING IS TO CONFORM TO THE INFORMATION CONTAINED ON THESE DRAWINGS, TO SHOW NORTH DIRECTION TO BE TOWARD BOTTOM OF DRAWING.
 3. 2150.260-E 001 (SAME AS NOTE 2)
 4. 2150.280-E 002 SHEET #1 CORRECT CELL PORTION OF DRAWING & REMOVE PICTURE OF DEFINING UNIT FROM THIS SECTION.
 5. 2150.280-E 002 SHEET #2 ROTATE VIEW OF CELL IN CENTER SECTION TO HAVE ONE OF THE DEFINING UNITS ON THE LOWER SIDE OF THE VERTICAL CENTERLINE AND SHOW NORTH DIRECTION TO BE TOWARD BOTTOM OF DRAWING.

REV. 117L

| | | | | | |
|--|--------------------|---|--|--------------------------------|--|
| FOR ASSEMBLY SEE | | TOLERANCES UNLESS OTHERWISE NOTED | | KITT PEAK NATIONAL OBSERVATORY | |
| DECIMAL DIMENSIONS | 0.0005-0.010 | OPERATED BY THE ASSOCIATION OF UNIVERSITIES FOR RESEARCH IN ASTRONOMY, INC. | | SCALE FULL | |
| FRACTIONAL DIMENSIONS | UP TO 1/16" 1/32" | UNIVERSITY CONTRACT WITH NATIONAL SCIENCE FOUNDATION | | PRINT ISSUED | |
| ALL SURFACES TO HAVE 125 FINISH UNLESS OTHERWISE NOTED. | BREAK SHARP EDGES. | 150 INCH STELLAR TELESCOPE | | NAME | |
| LAYOUT OF PRIMARY MIRROR BACK SUPPORT AIR PRESSURE MANIFOLDS | | DESIGNED BY DATE | | DRAWING NUMBER | |
| LAYOUT OF PRIMARY MIRROR BACK SUPPORT AIR PRESSURE MANIFOLDS | | CHECKED BY DATE | | 2120-E125A | |
| LAYOUT OF PRIMARY MIRROR BACK SUPPORT AIR PRESSURE MANIFOLDS | | APPROVED BY DATE | | REV. | |
| LAYOUT OF PRIMARY MIRROR BACK SUPPORT AIR PRESSURE MANIFOLDS | | LAYOUT OF PRIMARY MIRROR BACK SUPPORT AIR PRESSURE MANIFOLDS | | SHEET 3 OF 3 | |