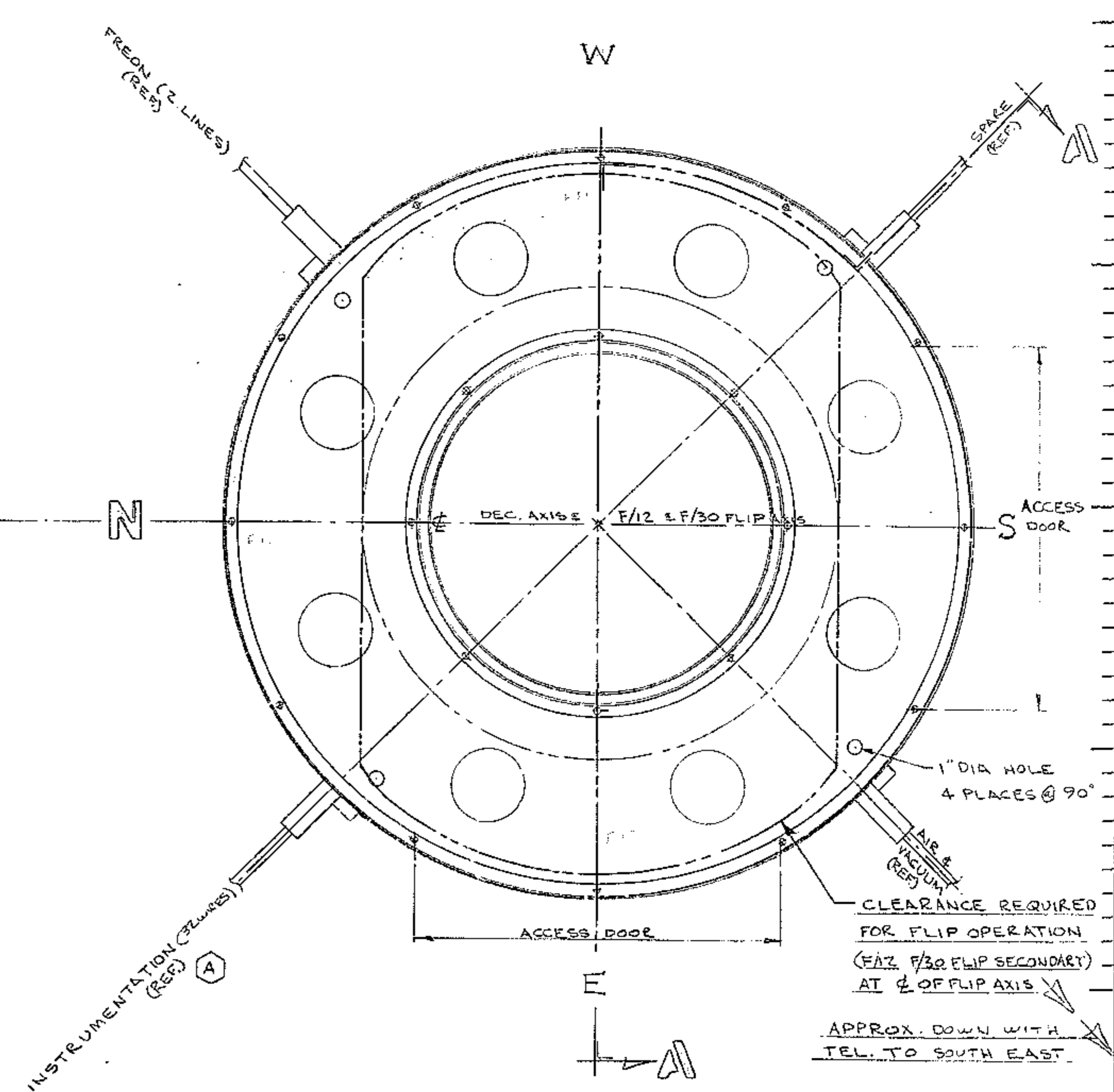
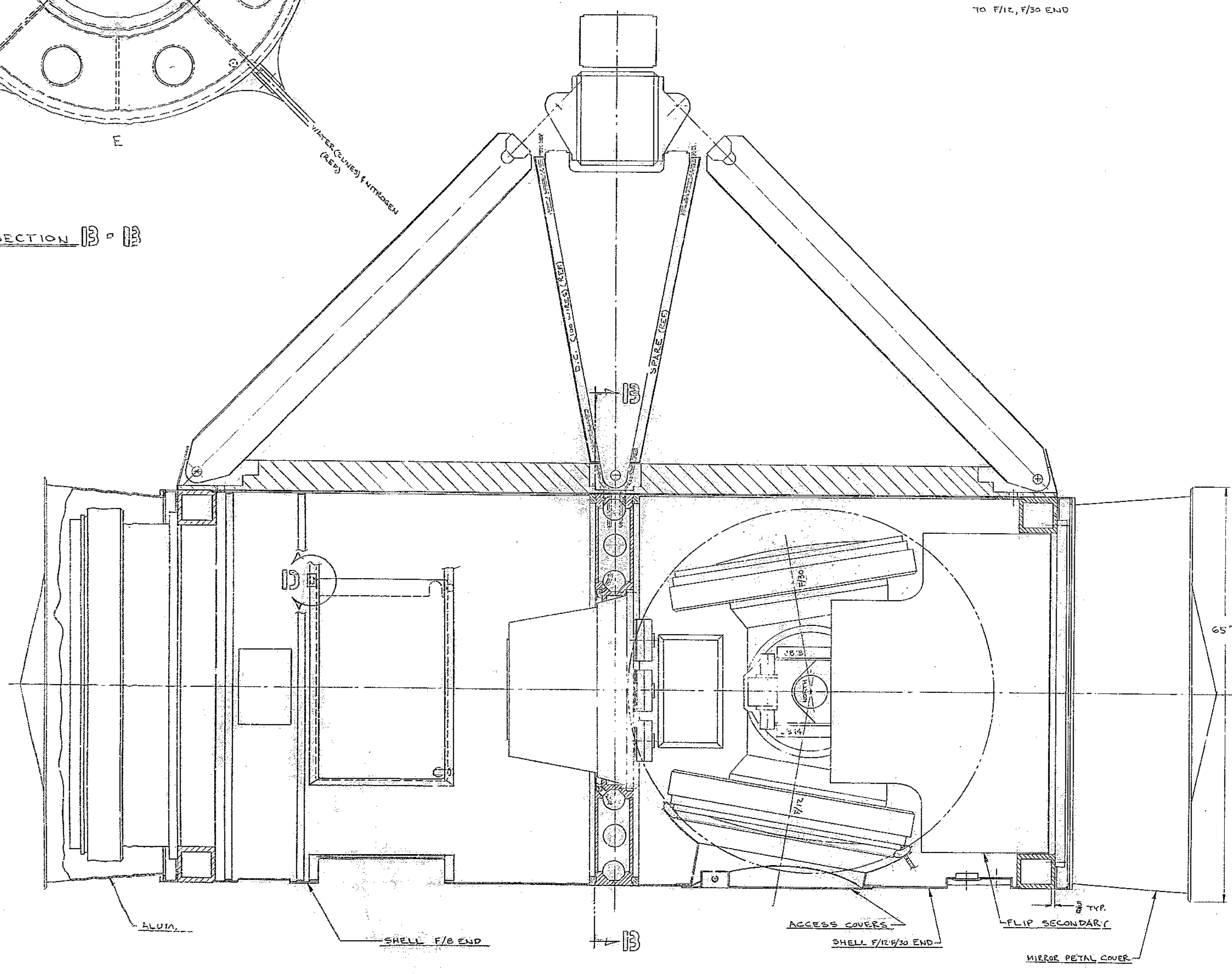
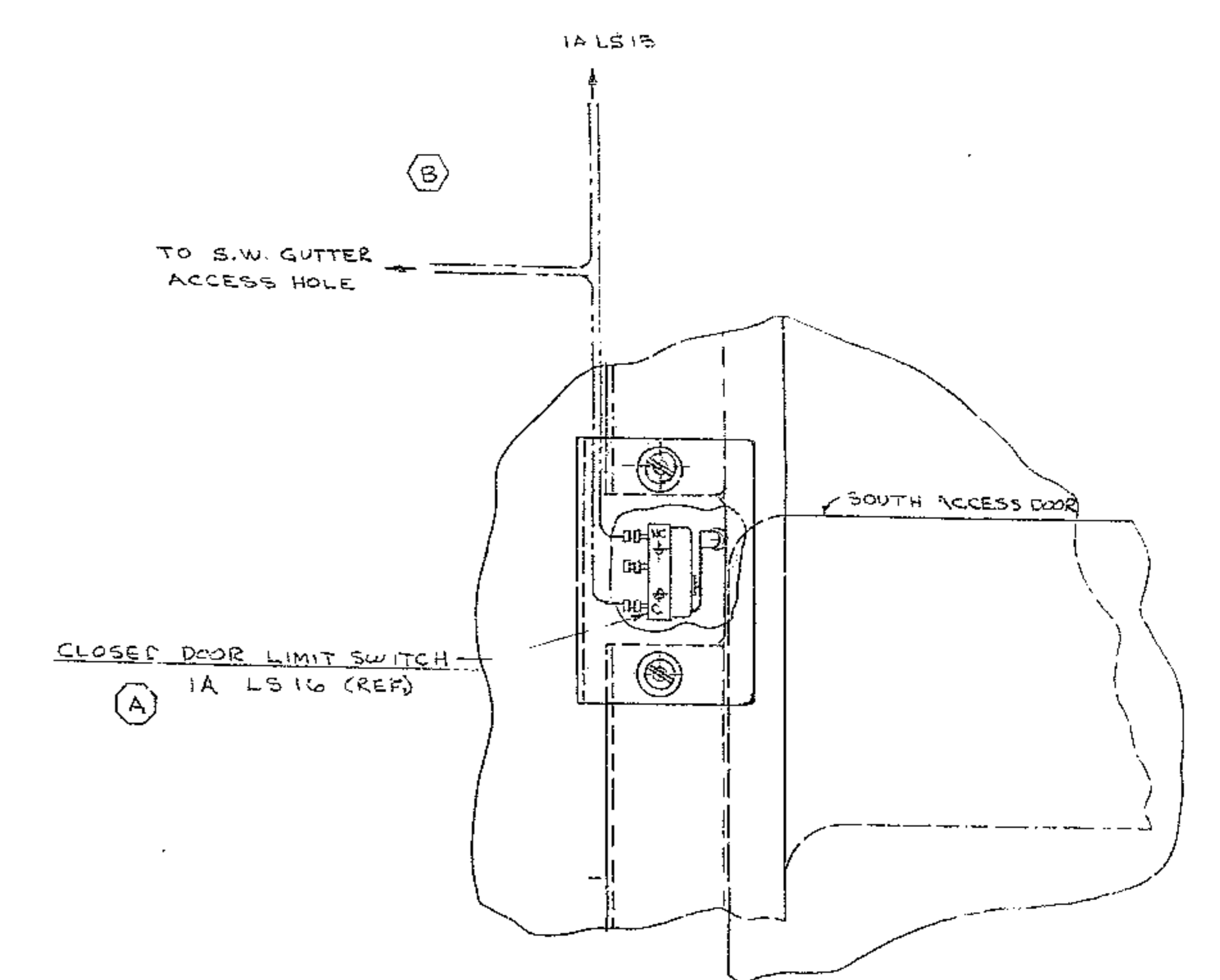
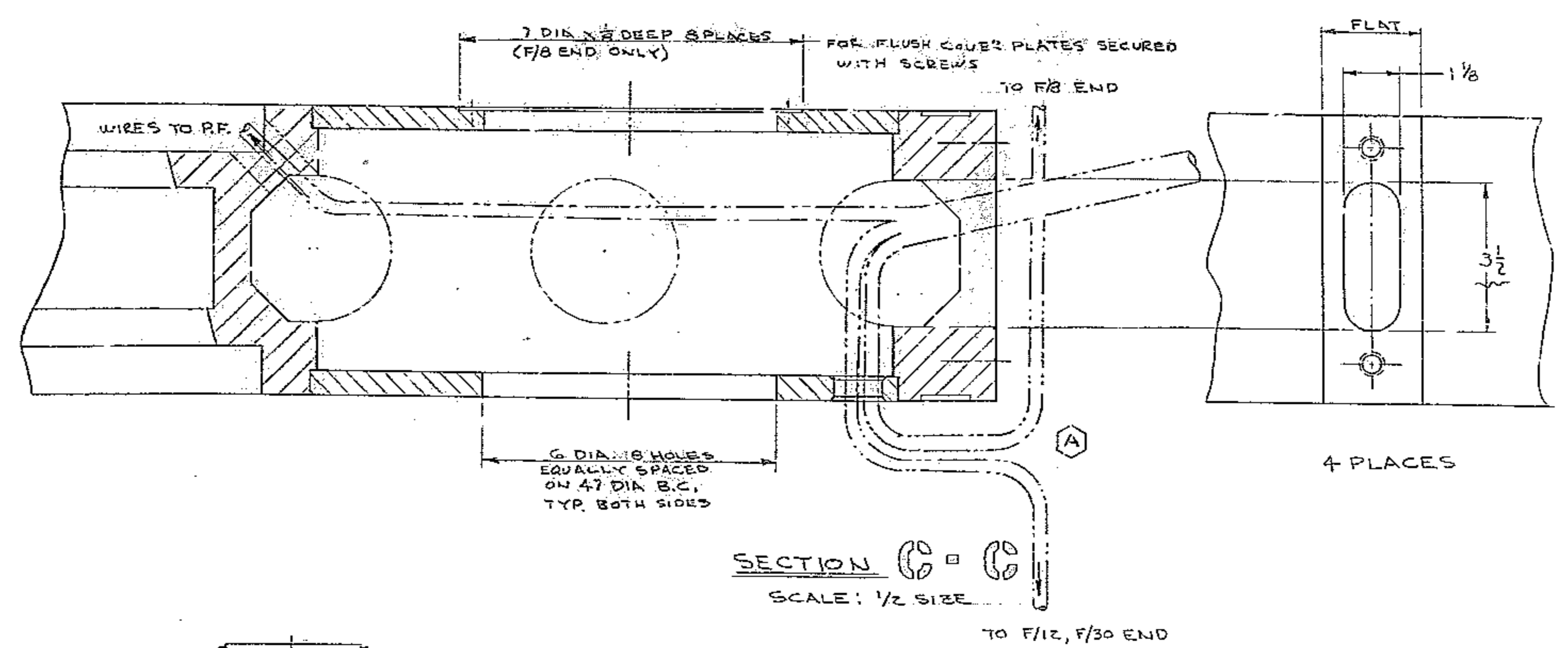
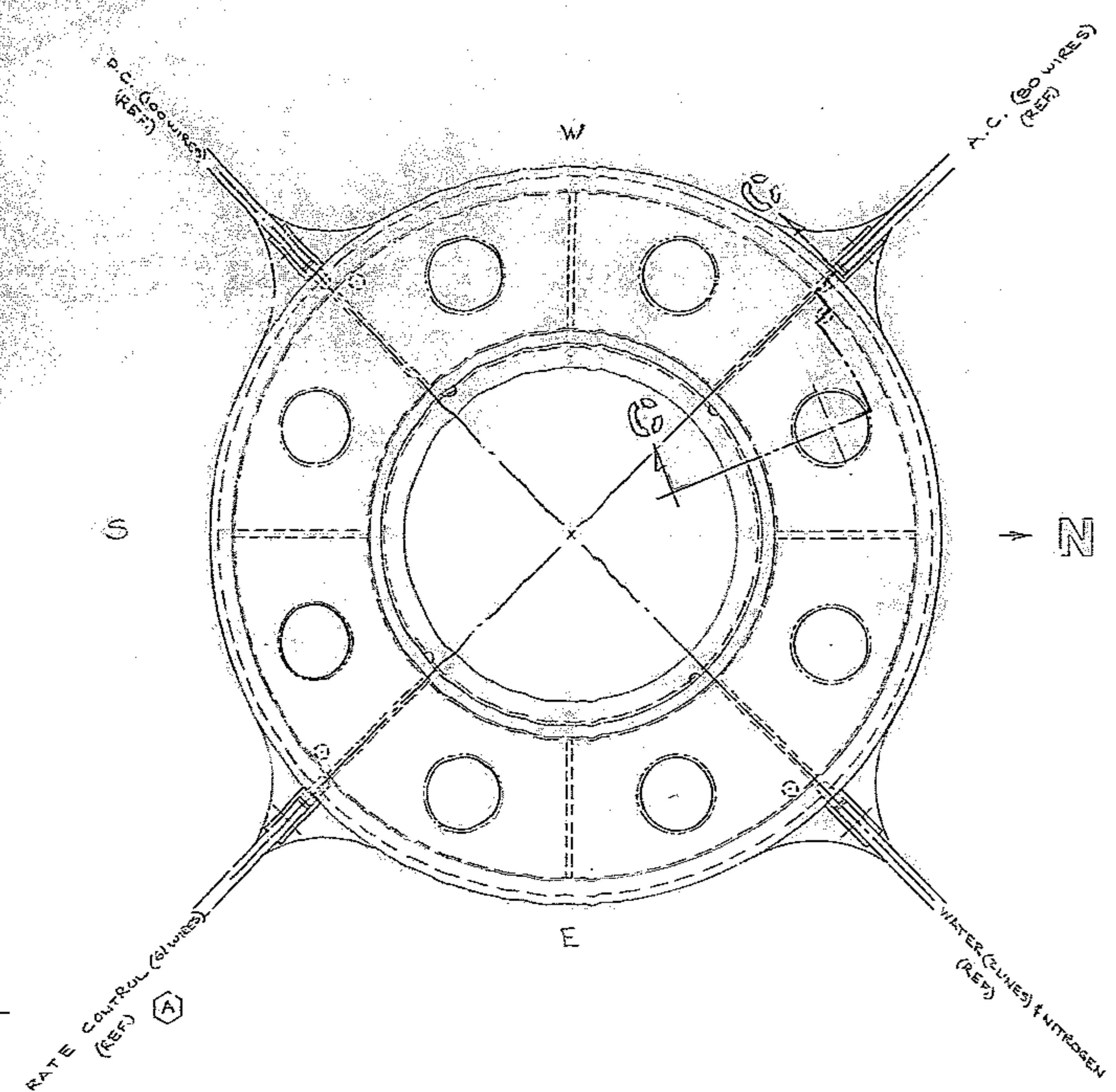


BILL OF MATERIAL

ITEM	QTY	MATERIAL	DESCRIPTION	WEIGHT
------	-----	----------	-------------	--------



PETAL MIRROR COVER, FLIP SECONDARY, ACCESS COVERS & SHELL F/12 F/30 END OMITTED TO SHOW PRIME FOCUS MOUNT

NOTES:

(A) ALL WIRES TO BE LACED INTO CABLES OF AC ONLY, D.C. ONLY, RATE CONTROL ONLY & INSTRUMENTATION ONLY. ALL CABLES & TUBING TO BE RETAINED OR CLIPPED AT INTERVALS OF NOT MORE THAN 6 INCHES.

FOR ASSEMBLY SEE		TOLERANCES UNLESS OTHERWISE NOTED		KITT PEAK NATIONAL OBSERVATORY	
DECIMAL DIMENSIONS	0.0005-0.010	OPERATED BY THE ASSOCIATION OF UNIVERSITIES FOR RESEARCH IN ASTRONOMY, INC.		REF FILE 1190	
FRACTIONAL DIMENSIONS	UP TO 1/16	UNLESS CONTRACT WITH NATIONAL SCIENCE FOUNDATION		SCALE 1/8" NOTED	
	1/16 TO 1/32	NAME 150 INCH STELLAR TELESCOPE		PRINT ISSUED	
	3/32 & OVER & 1/8	ROUTING FROM INNER FLIP RING TO SECONDARY & PRIME FOCUS ASSEMBLY		DRAWING NUMBER 2120-E1003	
	1/2	TO HAVE FINISH UNLESS OTHERWISE NOTED		REV. 3	
B CHANGED WIRING BETWEEN 12/3/64 & 1/10/65		DRAWN BY DATE		DATE	
A THICKNESS REDUCED FROM 2120-10-102 0395 12-10-68 F.H.		CHECKED BY DATE		DATE	
AND Added & Corrected Notes		APPROVED BY DATE		DATE	
LET.	REVISION	ECR	DATE	BY	