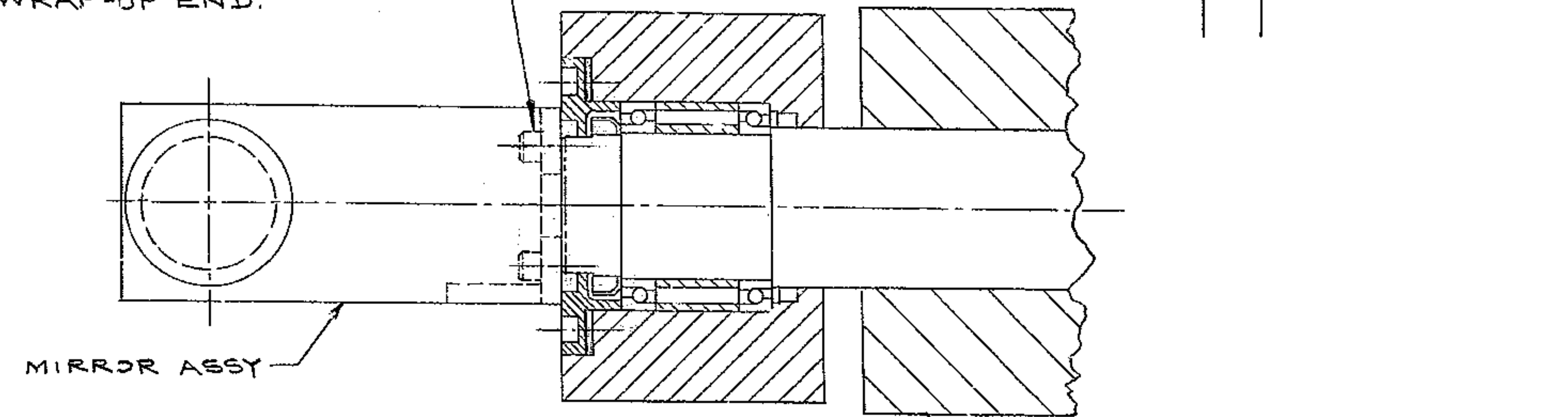
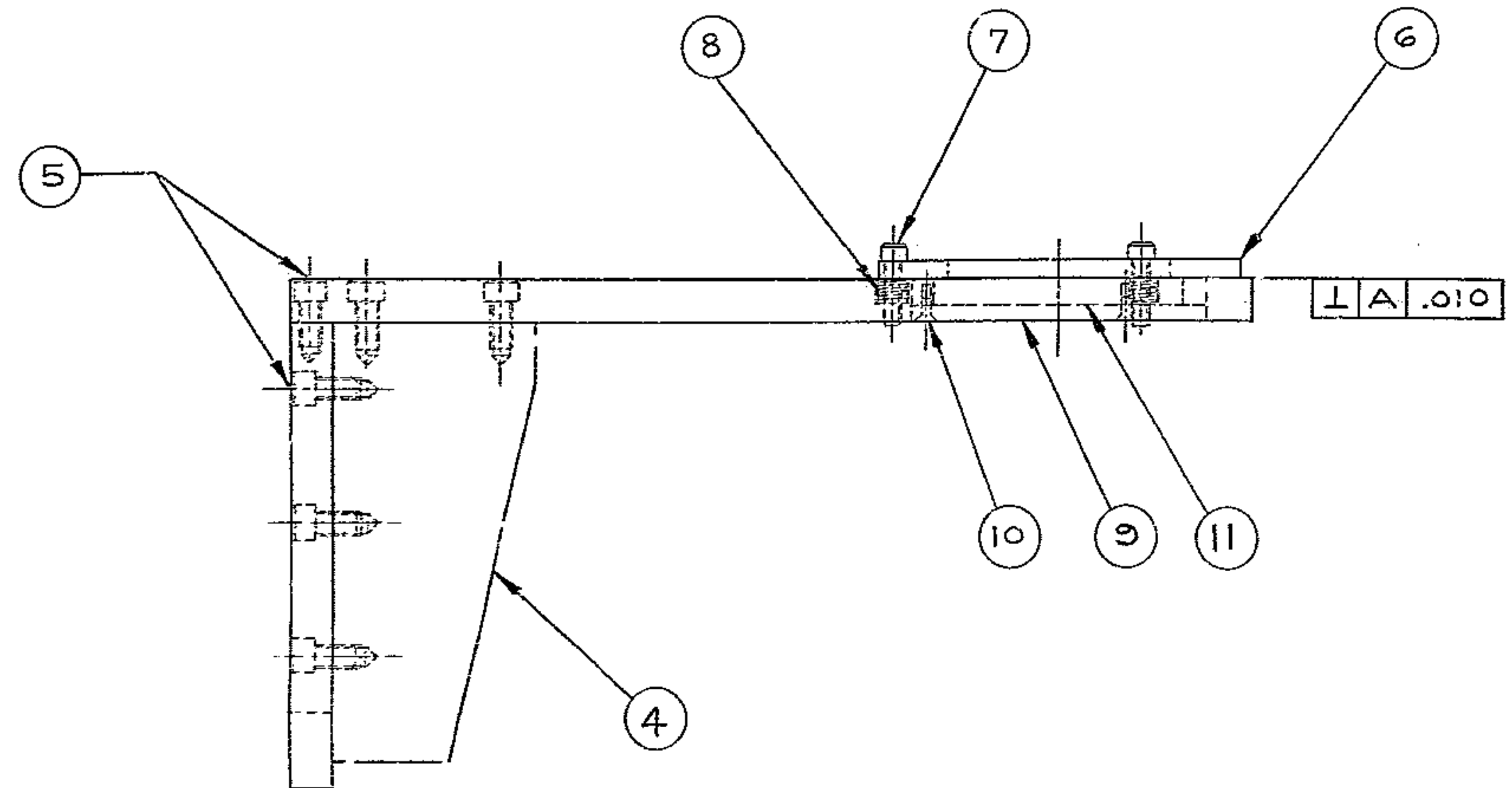


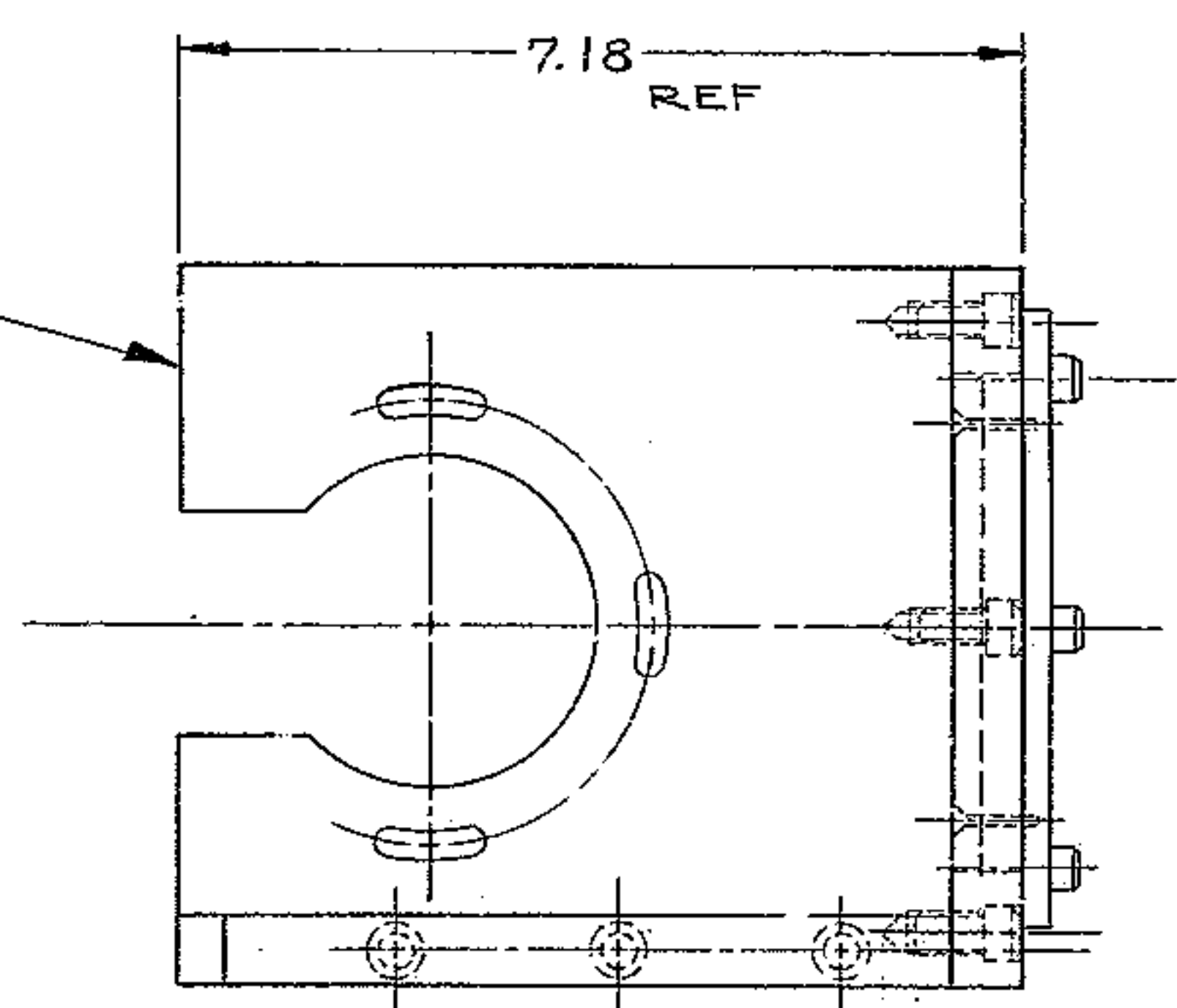
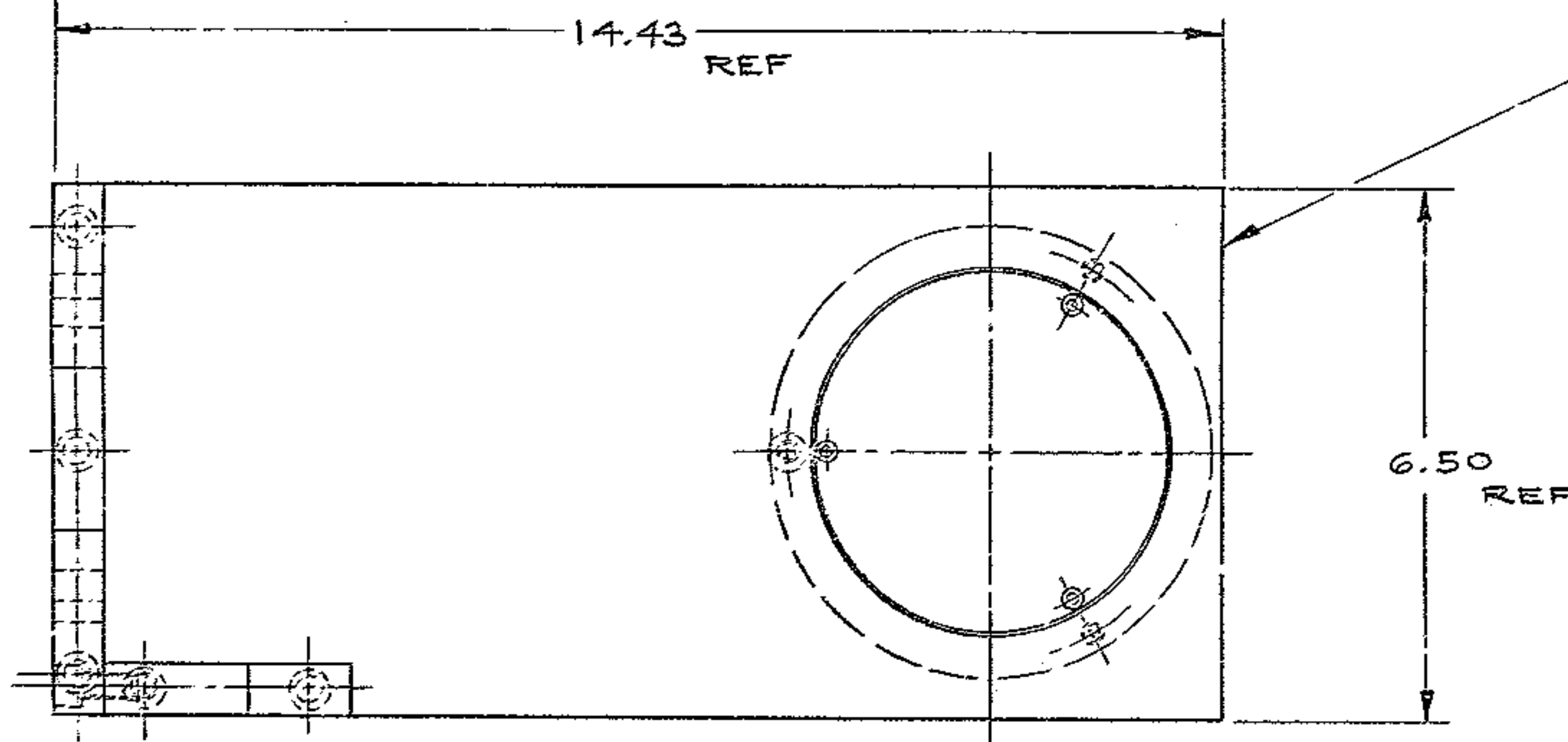
NOTES: UNLESS OTHERWISE NOTED
 1. REMOVE ALL BURRS AND SHARP EDGES .03 R MAX
 2. MACHINED SURFACE ROUGHNESS 125

NOTE: REMOVE IT. 8 FROM IT. 1 ON
 2150.500-E002 & INSTALL
 MIRROR ASSY ON CABLE
 WRAP-UP END.

REVISIONS					
ZONE	LTR	DESCRIPTION	ECR	DATE	BY APVD



DETAIL A
 MIRROR ASSY INSTALLATION
 SCALE: QUARTER SIZE



QTY REQD	PART OR IDENTIFYING NO.	DESCRIPTION	MATERIAL/SPECIFICATION	ITEM NO.
1	---	MIRROR - 3 1/2 DIA x 3/8 THK - COATED BOTH SIDES		11
3		*4-40 x 5/16 Soc FL HD SCREW - STL		10
1	2110-B8	MIRROR RETAINING RING		9
3		SPRING - TO SUIT - STL		8
3		1/4-20 x 1" Soc HD CAP SCREW - STL		7
1	2110-B7	MIRROR MOUNTING RING		6
8		5/16-18 x 1/2 Soc HD CAP SCREW - STL		5
1	2110-B6	SIDE PLATE		4
1	2110-C8	END PLATE		3
1	2110-C7	BASE PLATE		2

PARTS LIST					
TOLERANCES UNLESS OTHERWISE NOTED DECIMALS FRACTIONS .XX ± .03 ± — .XXX ± .010 ANGULAR ± 0° 30'		KITT PEAK NATIONAL OBSERVATORY <small>OPERATED BY THE ASSOCIATION OF UNIVERSITIES FOR RESEARCH IN ASTRONOMY, INC. UNDER CONTRACT WITH NATIONAL SCIENCE FOUNDATION</small>			
NEXT ASSEMBLY					NAME MIRROR ASSEMBLY SECONDARY FLIP ALIGNMENT 150 INCH TELESCOPE
SCALE: HALF & SHOWN		DESIGNED BY: A.A.A. DATE: 12-11-72 DRAWN BY: D.L.B. DATE: 12-18-72	APPROVED BY: A.A.A. DATE: 5-7-73 APPROVED BY: DATE:	DWG NO. 2110-D9	REV
PRINT ISSUED		CHECKED BY: DATE:	APPROVED BY: DATE:	RELEASE DATE: 5-8-73	2 <i>rac</i> 5-2-73