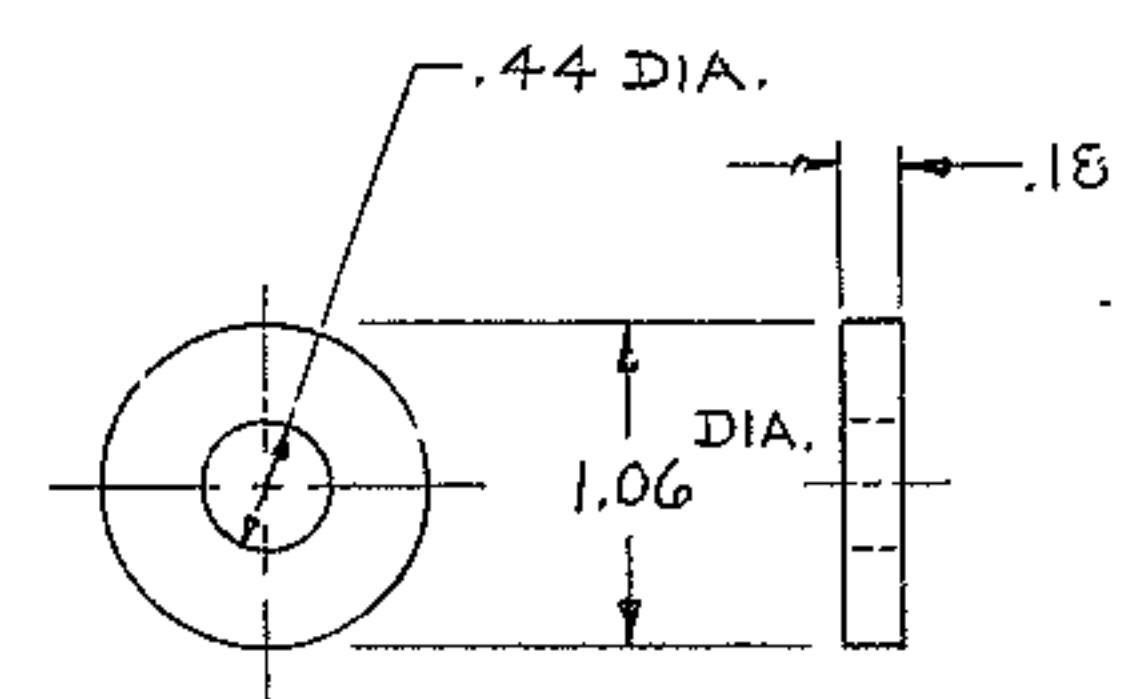
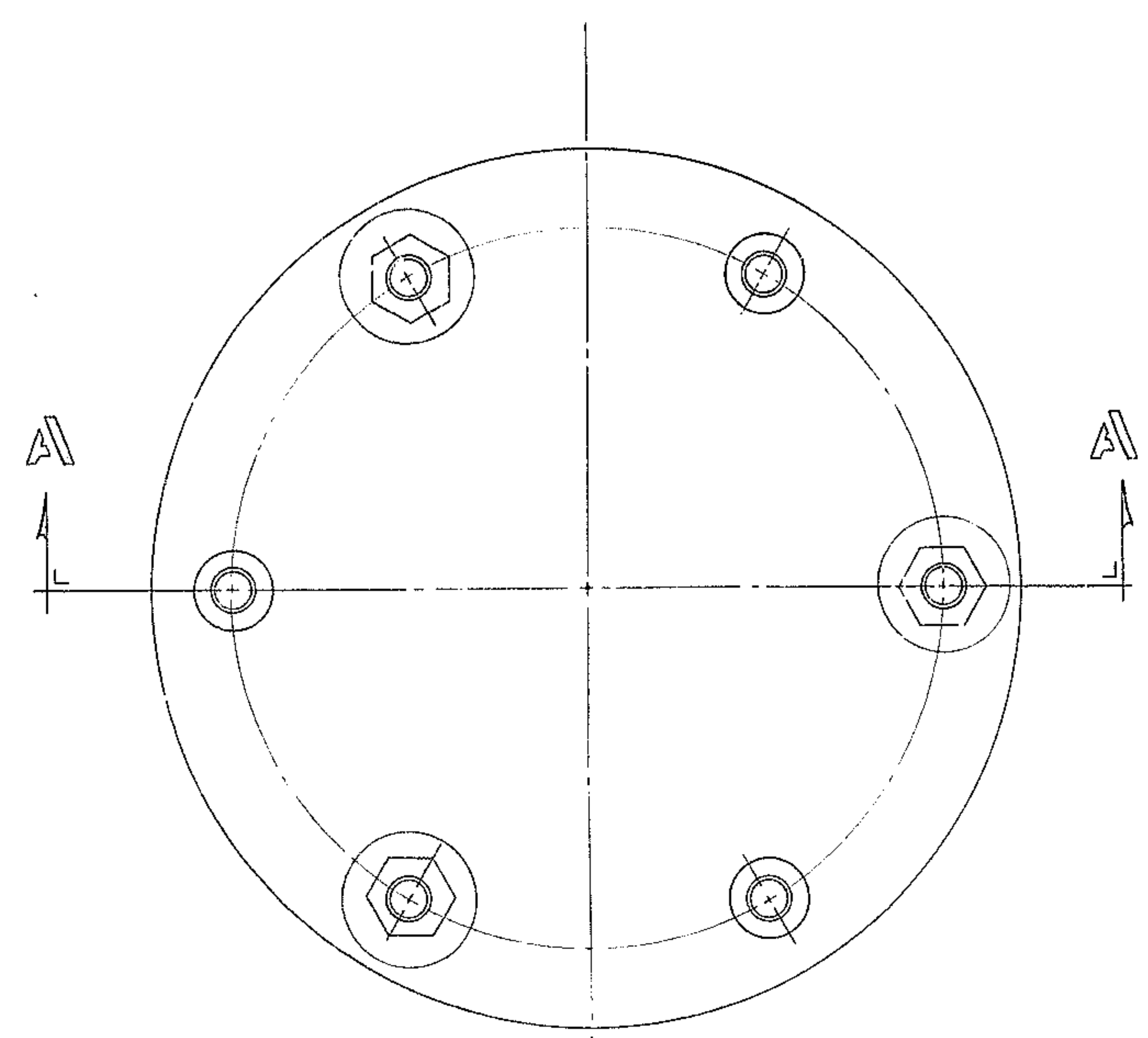
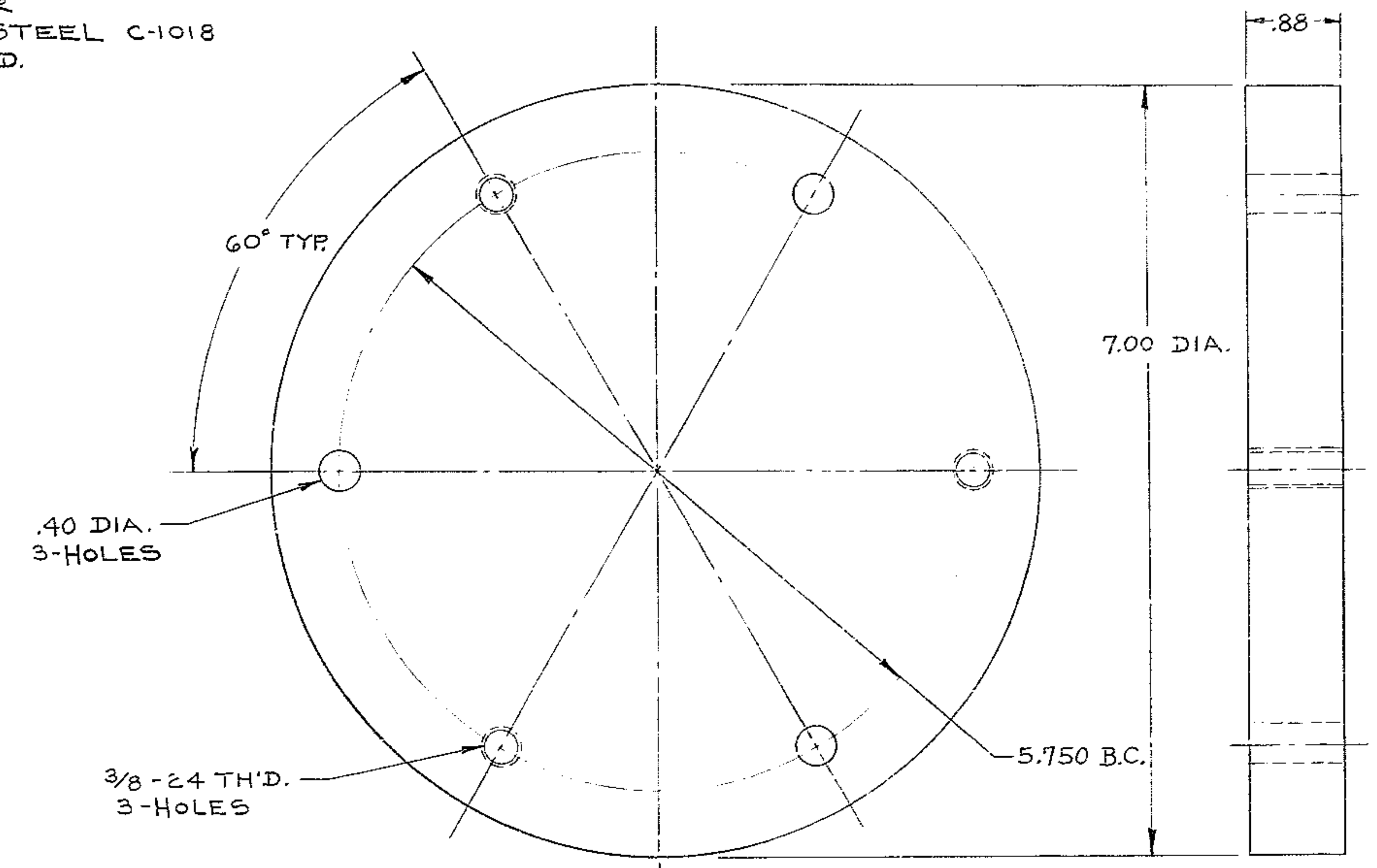


BILL OF MATERIAL

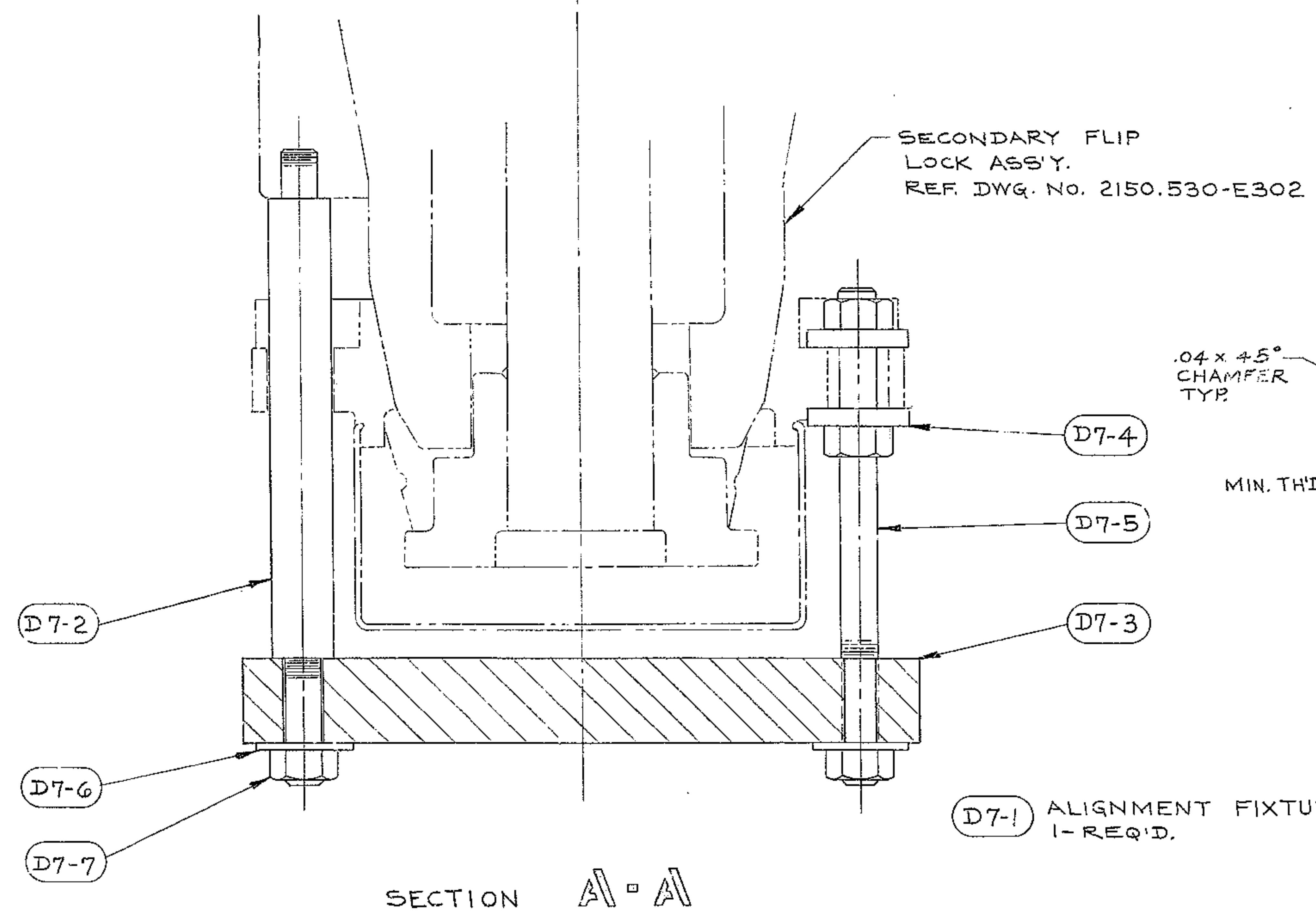
ITEM	QTY.	MATERIAL	DESCRIPTION	WEIGHT
2110-D7-1	1		ALIGNMENT FIXTURE	
"	-2	STEEL	3/8-24 X 5 1/8 LONG THREADED ROD	
"	-3	STEEL	3/8 FLAT WASHER	
"	-4	STEEL	3/8-24 HEX NUT	



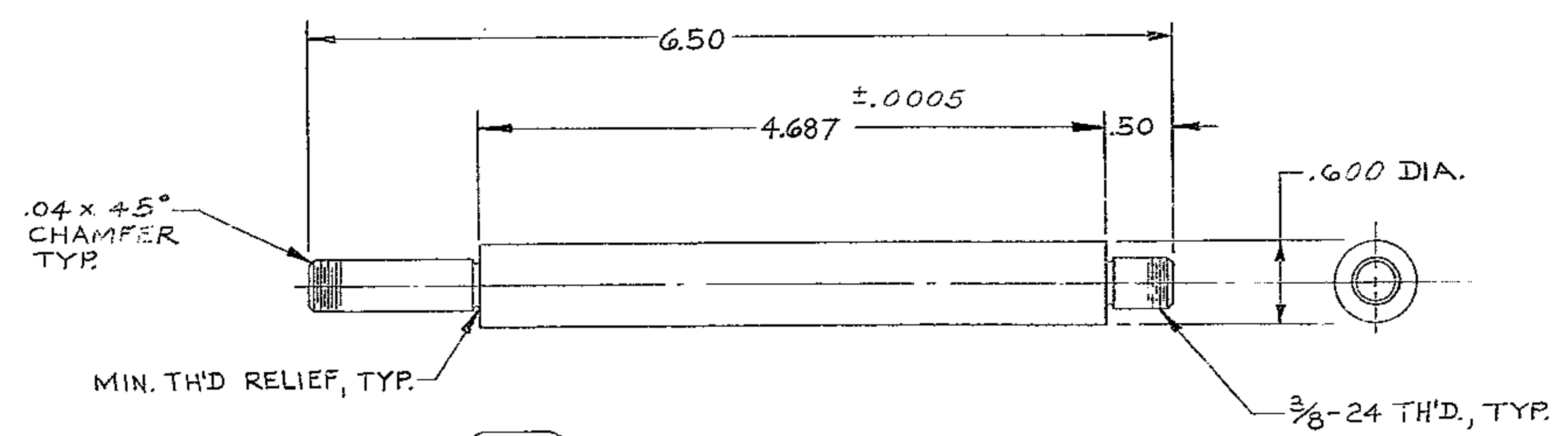
D7-4 WASHER
MAT'L: STEEL C-1018
6-REQ'D.



D7-3 BASE PLATE
MAT'L. STEEL C-1018
1-REQ'D.



D7-1 ALIGNMENT FIXTURE ASS'Y.
1-REQ'D.



D7-2 ALIGNMENT ROD
MAT'L. STEEL C-1018
3-REQ'D.

5-ALL ITEMS ARE FINISHED WITH A CADMIUM PLATE.
4-IDENTIFY BY _____ AT LOCATION 4, "AURA INC. MADE IN U.S.A."
3-STAMP MATCH MARKS ON ALL MATING PARTS WHERE NECESSARY.
2-PROJECT DRAWINGS
1-FOR NEXT ASSY. SEE _____
NOTES-

LET.	REVISION	ECR	DATE	BY

TOLERANCES UNLESS OTHERWISE NOTED
DECIMAL DIMENSIONS
00.00 ± .010
00.000 ± .003
FRACTIONAL DIMENSIONS
UP TO 1" ± 1/64
1" TO 50" ± 1/32
50" & OVER ± 1/16
BREAK SHARP EDGES .03
ALL SURFACES TO HAVE 125 FINISH UNLESS OTHERWISE NOTED.

KITT PEAK NATIONAL OBSERVATORY
OPERATED BY THE ASSOCIATION OF UNIVERSITIES FOR RESEARCH IN ASTRONOMY, INC.
UNDER CONTRACT WITH NATIONAL SCIENCE FOUNDATION

150 INCH STELLAR TELESCOPE REF. FILE 1193

NAME: ALIGNMENT FIXTURE FOR SECONDARY FLIP LOCK ASS'Y. SCALE FULL PRINT ISSUED

DESIGNED BY: A. ABRAHAM DATE: 8-18-70 APPROVED BY: A. ABRAHAM DATE: 10-28-70
DRAWN BY: D.L.B. DATE: 8-18-70 APPROVED BY: DATE:
CHECKED BY: DATE: APPROVED BY: DATE:
DRAWING NUMBER: 2110-D7 REV.